

ANWYL  
thoughtful homes

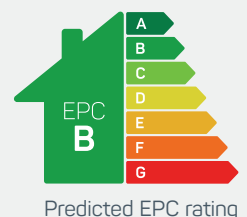


## the cheltenham

4 bed detached

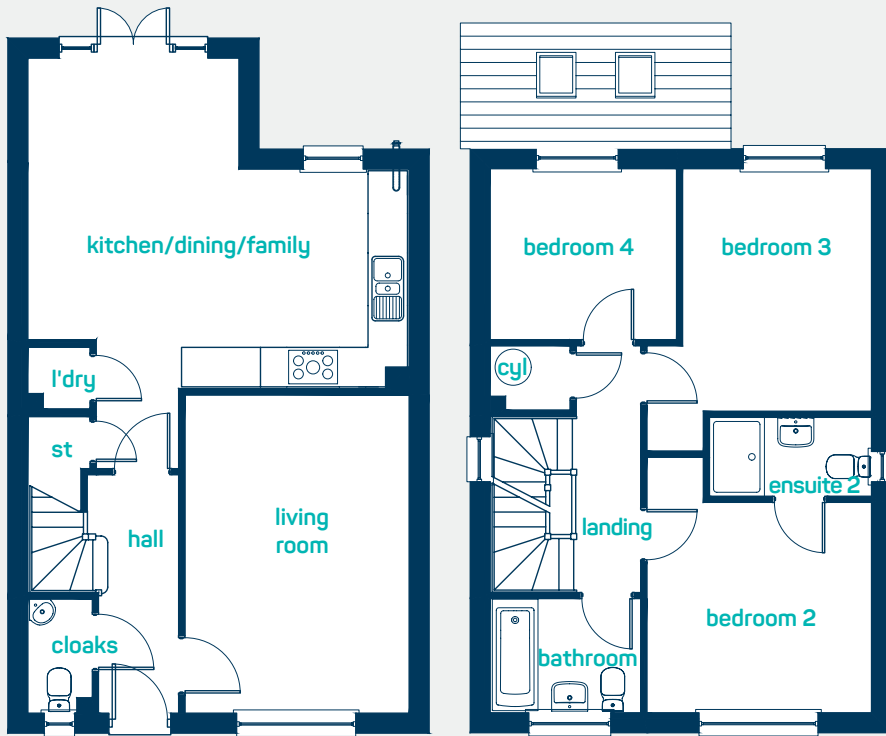
*Spacious* and thoughtfully designed accommodation over 3 floors. Ideal for growing families. Key features include an impressive master suite and shower room on the top floor offering the perfect place to unwind. A further en-suite shower room and family bathroom ensure that even busy times are a pleasure.

[www.anwylhomes.co.uk](http://www.anwylhomes.co.uk)





ideal for  
growing families

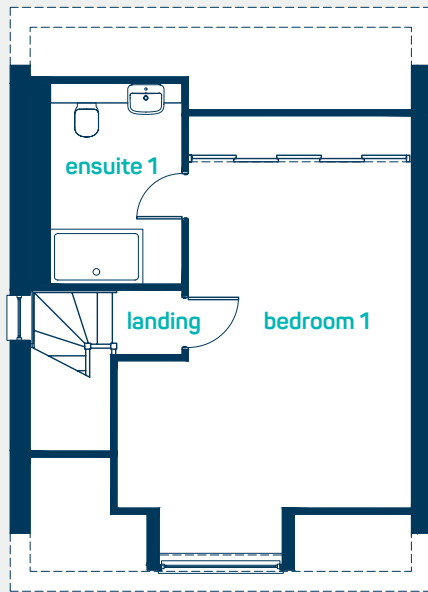


### ground floor

kitchen/dining /family	18'10" x 16'4"
living room	15'9" x 11'0"
cloaks	5'7" x 3'2"
kitchen/dining /family	5.75m x 4.97m
living room	4.79m x 3.36m
cloaks	1.71m x 0.96m

### first floor

bedroom 2	11'1" x 10'5"
en-suite 2	8' x 3'11"
bedroom 3	12' x 11'1"
bedroom 4	9'3" x 8'5"
bathroom	7'5" x 5'7"
bedroom 2	3.39m x 3.17m
en-suite 2	2.44m x 1.2m
bedroom 3	3.66m x 3.39m
bedroom 4	2.81m x 2.57m
bathroom	2.26m x 1.71m



### second floor

bedroom 1	21'11" x 14'7"
en-suite 1	10' x 6'7"
bedroom 1	6.68m x 4.45m
en-suite 1	3.05m x 2m

**the cheltenham**  
4 bed detached

**ANWYL**  
thoughtful homes

**NEW HOMES**  
QUALITY  
CODE

**NEW HOMES**  
OMBUDSMAN  
SERVICE

[www.anwylhomes.co.uk](http://www.anwylhomes.co.uk)

Anwyl Homes is a Registered Developer with the NHQB. This is a computer-generated image of the cheltenham, elevation treatment may vary. Room sizes are approximate, dimensions are taken from the longest room point (please consult homes advisor for measurement points). Plots may be handed and any garages may be single or double. Kitchen and bathroom layouts are indicative. These plans are correct at the time of going to press, but may be subject to change during construction. Please ensure that you check for specific plot details. 08/06/2023. Cheltenham - Parc Bodafon.

everything considered.