

ANWYL  
*thoughtful homes*



**the kingsley**  
4 bed detached

An *impressive* 4 bedroom detached home, ideal for families. Key features include a large open plan kitchen, dining and family room with a separate living room, utility and study.

[www.anwylhomes.co.uk](http://www.anwylhomes.co.uk)

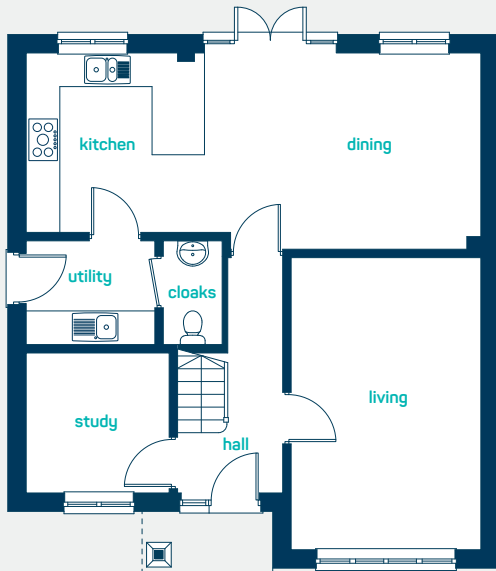
got  
questions?

call...

**03300  
244 944**

*everything considered.*

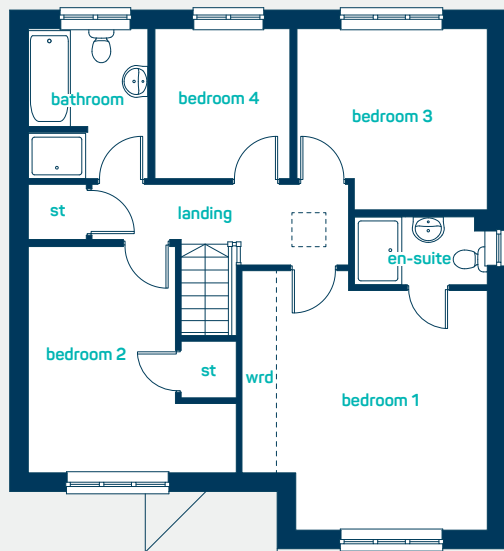




## ground floor

kitchen/dining	26'7" x 11'6"
utility	7'6" x 6'1"
living room	17'1" x 11'1"
study	8'4" x 8'2"

kitchen/dining	8.11m x 3.50m
utility	2.30m x 1.85m
living room	5.21m x 3.38m
study	2.55m x 2.50m



## first floor

bedroom 1	15'1" x 14'3"
(into wardrobe)	
en-suite	7'9" x 3'11"
bedroom 2	13'2" x 12'1"
bedroom 3	11'0" x 10'6"
bedroom 4	8'8" x 8'0"
bathroom	8'8" x 6'11"

bedroom 1	4.58m x 4.33m
(into wardrobe)	
en-suite	2.35m x 1.19m
bedroom 2	4.02m x 3.68m
bedroom 3	3.36m x 3.20m
bedroom 4	2.65m x 2.43m
bathroom	2.65m x 2.11m

## the kingsley

4 bed detached

[www.anwylhomes.co.uk](http://www.anwylhomes.co.uk)

This is a computer generated image of the kingsley, elevation treatment may vary. Room sizes are approximate, dimensions are taken from the longest room point (please consult homes advisor for measurement points). Plots may be handed and any garages may be single or double. Kitchen and bathroom layouts are indicative. These plans are correct at the time of going to press, but may be subject to change during construction. Please ensure that you check for specific plot details.  
25/07/19

get in  
touch...  
**03300  
244 944**

everything considered.