

ANWYL
thoughtful homes

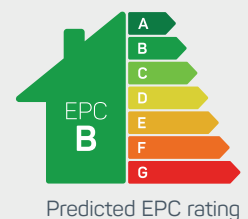


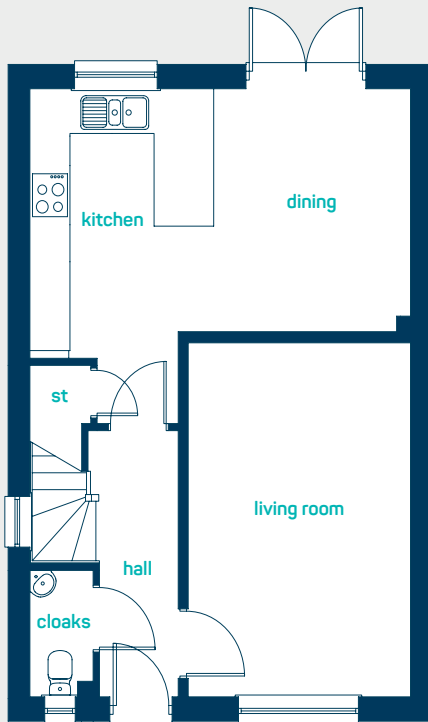
the bunbury

3 bed detached

Perfect as a *family* starter home or for first-time buyers. Key features include 3 double bedrooms and an open plan kitchen family room perfect for modern living.

www.anwylhomes.co.uk

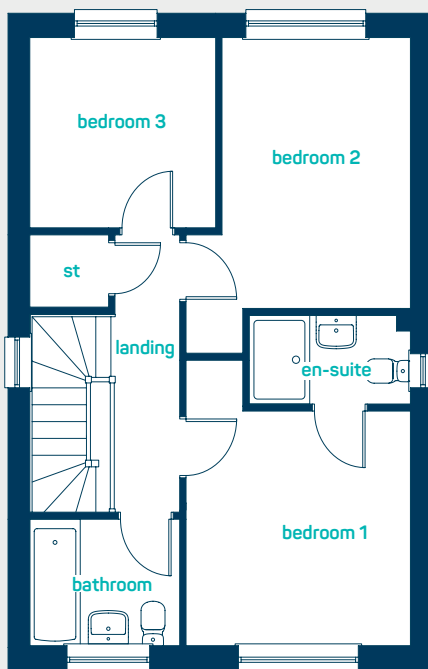




perfect for
new families

ground floor

kitchen/dining	18'10" x 12'0"
living room	15'9" x 11'0"
cloaks	5'7" x 3'4"
kitchen/dining	5.75m x 3.64m
living room	4.79m x 3.36m
cloaks	1.71m x 1.02m



first floor

bedroom 1	12'8" x 11'1"
(into door)	
en-suite	8'0" x 3'11"
bedroom 2	14'0" x 11'1"
(into door)	
bedroom 3	9'3" x 8'5"
bathroom	7'5" x 5'7"
bedroom 1	3.86m x 3.39m
(into door)	
en-suite	2.44m x 1.2m
bedroom 2	4.27m x 3.39m
(into door)	
bedroom 3	2.81m x 2.57m
bathroom	2.26m x 1.71m

the bunbury
3 bed detached

ANWYL
thoughtful homes

NEW HOMES QUALITY CODE

NEW HOMES OMBUDSMAN SERVICE

www.anwylhomes.co.uk

Anwyl Homes is a Registered Developer with the NHQB. This is a computer-generated image of the bunbury detached (hipped), elevation treatment may vary. Room sizes are approximate, dimensions are taken from the longest room point (please consult homes advisor for measurement points). Plots may be handed and any garages may be single or double. Kitchen and bathroom layouts are indicative. These plans are correct at the time of going to press, but may be subject to change during construction. Please ensure that you check for specific plot details. 01/11/22.

everything considered.