

ANWYL  
thoughtful homes

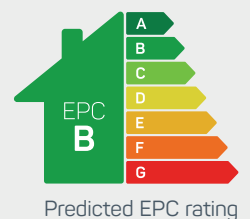


## the styal

1 bed apartment

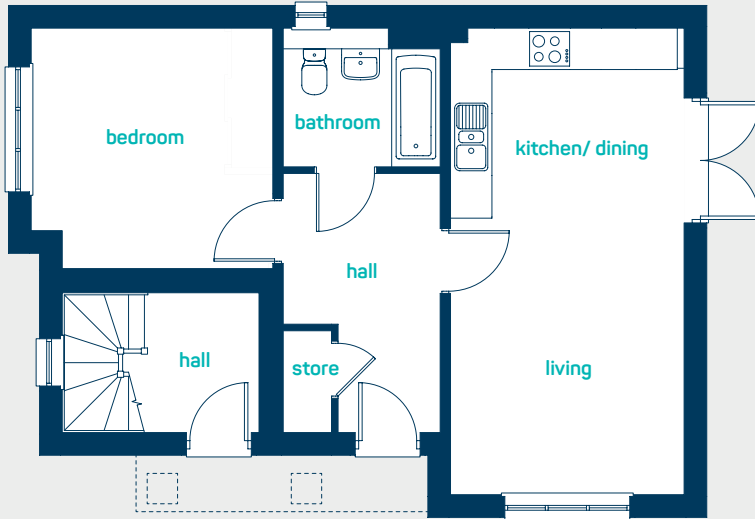
A *modern* 1-bedroom apartment. Key features include open-plan living space, large bedroom and bathroom.

[www.anwylhomes.co.uk](http://www.anwylhomes.co.uk)





### ground floor apartment

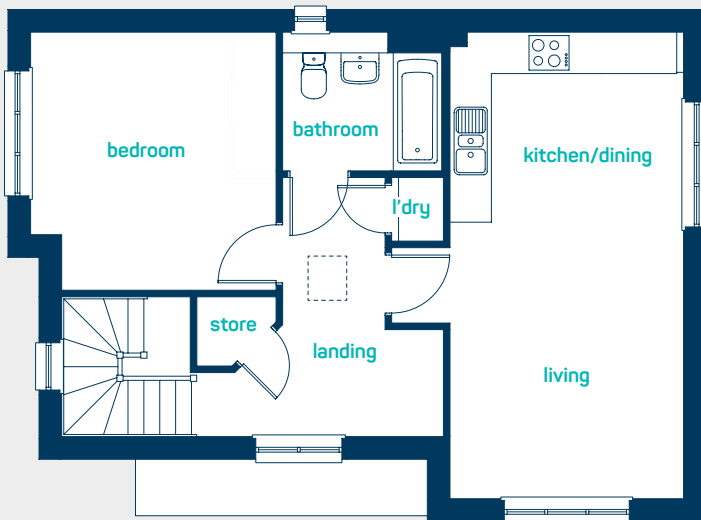


#### ground floor apartment

kitchen/dining/living 22'2" x 11'1"  
 bedroom 11'6" x 11'5"  
 bathroom 7'6" x 6'5"

kitchen/dining/living 6.76m x 3.38m  
 bedroom 3.50m x 3.48m  
 bathroom 2.27m x 1.96m

### first floor apartment



#### first floor apartment

kitchen/dining/living 22'2" x 11'1"  
 bedroom 12'4" x 11'8"  
 bathroom 7'7" x 6'5"

kitchen/dining/living 6.76m x 3.38m  
 bedroom 3.75m x 3.56m  
 bathroom 2.31m x 1.96m

**the styal**  
 1 bed apartment

[www.anwylhomes.co.uk](http://www.anwylhomes.co.uk)



Anwyl Homes is a Registered Developer with the NHQB. This is a computer-generated image of the styal, elevation treatment may vary. Room sizes are approximate, dimensions are taken from the longest room point (please consult homes advisor for measurement points). Plots may be handed and any garages may be single or double. Kitchen and bathroom layouts are indicative. These plans are correct at the time of going to press, but may be subject to change during construction. Please ensure that you check for specific plot details. 01/11/22.

*everything considered.*