

ANWYL
thoughtful homes

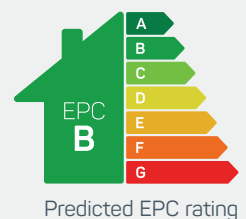


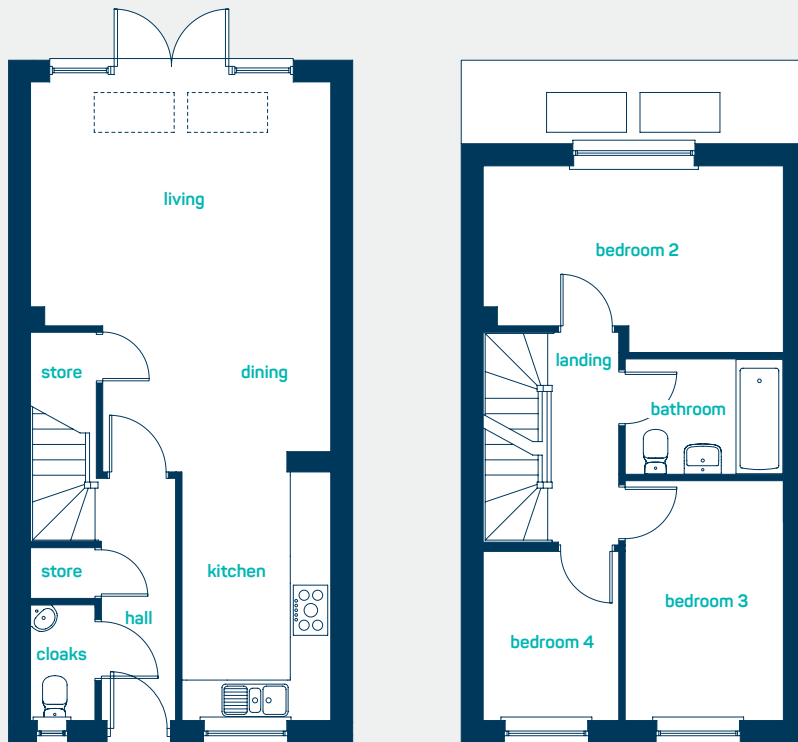
the euxton

4 bed semi-detached

A 2.5 storey, 4 bedroom *semi-detached* home. Key features include a large open plan kitchen-dining and living room that spans across the ground floor with French doors leading out to the rear, 4 bedrooms including a top floor master bedroom with en-suite shower room and dressing area and a separate family bathroom.

www.anwylhomes.co.uk





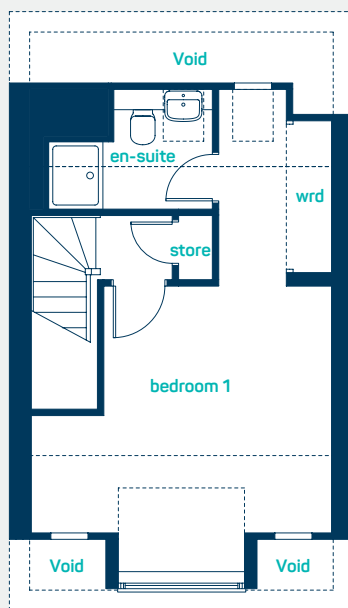
ideal for
growing families

ground floor

lounge / dining	18' x 14'7"
kitchen	12'1" x 7'3"
cloaks	5'8" x 3'2"
lounge / dining	5.47m x 4.45m
kitchen	3.68m x 2.21m
cloaks	1.72m x 0.96m

first floor

bedroom 2	14'7" x 9'1"
bedroom 3	1'8" x 7'8"
bedroom 4	8'3" x 6'7"
bathroom	7'8" x 5'7"
bedroom 2	4.45m x 2.77m
bedroom 3	3.56m x 2.35m
bedroom 4	2.51m x 2.01m
bathroom	2.35m x 1.71m



second floor

bedroom 1	14'7" x 14'
dressing area	9'7" x 5'6"
en-suite	8' x 5'10"
bedroom 1	4.45m x 4.26m
dressing area	2.92m x 1.67m
en-suite	2.43m x 1.77m

the euxton
4 bed semi-detached

www.anwylhomes.co.uk

ANWYL
thoughtful homes

**NEW
HOMES
QUALITY
CODE**

**NEW HOMES
OMBUSMAN
SERVICE**

Anwyl Homes is a Registered Developer with the NHQB. This is a computer-generated image of the euxton, elevation treatment may vary. Room sizes are approximate, dimensions are taken from the longest room point (please consult homes advisor for measurement points). Plots may be handed and any garages may be single or double. Kitchen and bathroom layouts are indicative. These plans are correct at the time of going to press, but may be subject to change during construction. Please ensure that you check for specific plot details. 01/11/22.

everything considered.