

ANWYL
thoughtful homes

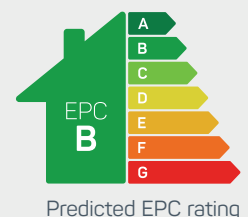


the cheltenham at mill green

4 bed detached

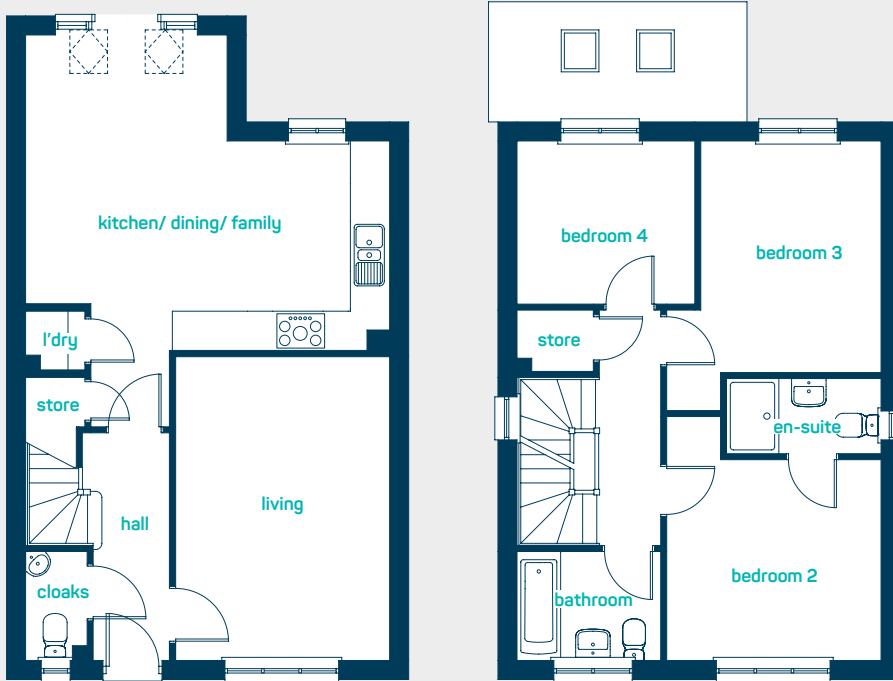
Spacious and thoughtfully designed accommodation over 3 floors. Ideal for growing families. Key features include an impressive master suite and shower room on the top floor offering the perfect place to unwind. A further en-suite shower room and family bathroom ensure that even busy times are a pleasure.

www.anwylhomes.co.uk





ideal for
growing families

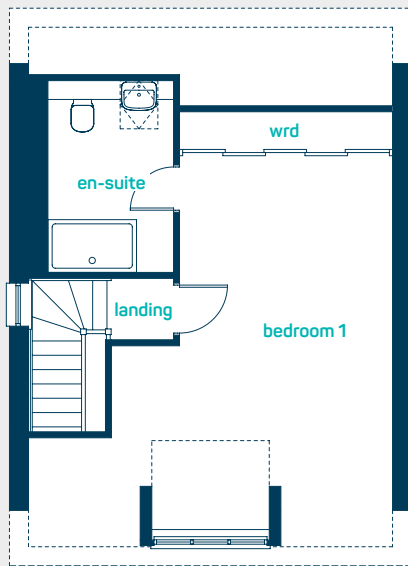


ground floor

| | |
|------------------------|----------------|
| kitchen/dining /family | 18'10" x 16'4" |
| living room | 15'9" x 11'0" |
| laundry cupboard | 3'1" x 3'0" |
| cloaks | 5'7" x 3'2" |
| | |
| kitchen/dining /family | 5.75m x 4.97m |
| living room | 4.79m x 3.36m |
| laundry cupboard | 0.94m x 0.92m |
| cloaks | 1.71m x 0.96m |

first floor

| | |
|------------|---------------|
| bedroom 2 | 11'1" x 10'5" |
| en-suite 2 | 8'0" x 3'11" |
| bedroom 3 | 12'0 x 11'1" |
| bedroom 4 | 9'3" x 8'5" |
| bathroom | 7'5" x 5'7" |
| | |
| bedroom 2 | 3.39m x 3.17m |
| en-suite 2 | 2.44m x 1.20m |
| bedroom 3 | 3.66m x 3.39m |
| bedroom 4 | 2.81m x 2.57m |
| bathroom | 2.26m x 1.71m |



second floor

| | |
|------------|----------------|
| bedroom 1 | 21'11" x 14'7" |
| en-suite 1 | 10'0" x 6'7" |
| | |
| bedroom 1 | 6.68m x 4.45m |
| en-suite 1 | 3.05m x 2.00m |

the cheltenham
at mill green
4 bed detached

www.anwyllhomes.co.uk

ANWYL
thoughtful homes

NEW HOMES QUALITY CODE

NEW HOMES SERVICE OMBUDSMAN

Anwyl Homes is a Registered Developer with the NHQB. This is a computer-generated image of the cheltenham at mill green, elevation treatment may vary. Room sizes are approximate, dimensions are taken from the longest room point (please consult homes advisor for measurement points). Plots may be handed and any garages may be single or double. Kitchen and bathroom layouts are indicative. These plans are correct at the time of going to press, but may be subject to change during construction. Please ensure that you check for specific plot details. 01/11/22.

everything considered.