

ANWYL
thoughtful homes

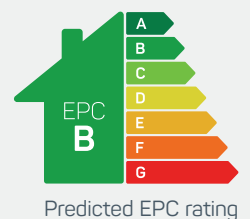


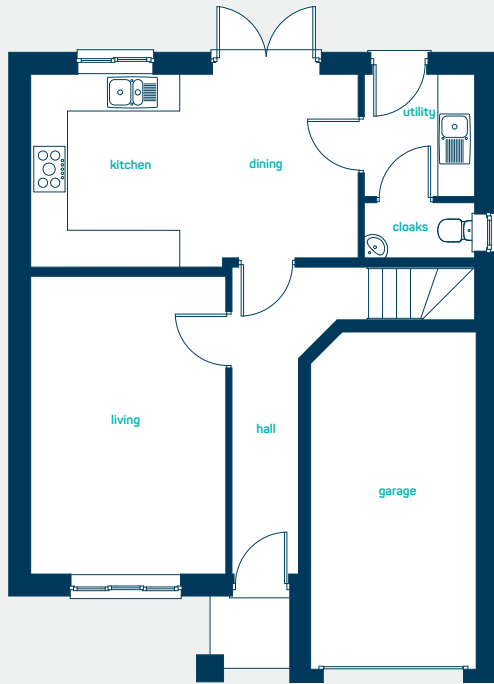
the lymm

4 bed detached with garage

A *generous* 4 bedroom detached home. Key features include an open plan kitchen/diner with separate utility and living room.

www.anwylhomes.co.uk



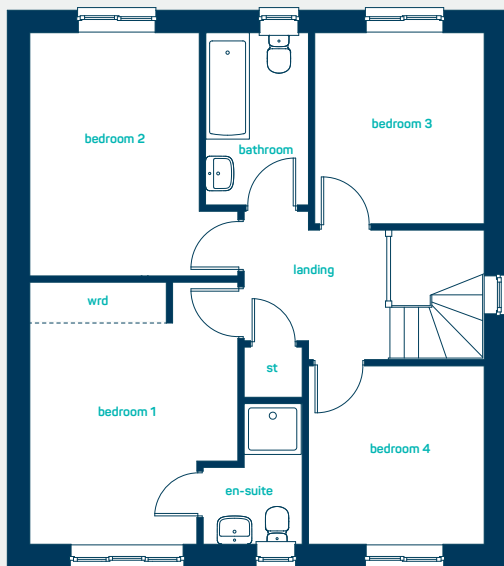


modern
open plan living

ground floor

kitchen/dining 17'6" x 9'10"
utility 6'1" x 5'10"
living room 16'5" x 10'5"

kitchen/dining 5.34m x 2.99m
utility 1.86m x 1.80m
living room 5.00m x 3.18m



first floor

bed 1 13'8" x 10'11"
en-suite 7'4" x 5'2"
bed 2 12'9" x 8'10"
bed 3 9'6" x 8'10"
bed 4 9'10" x 9'2"
bathroom 9'0" x 5'5"

bed 1 4.18m x 3.32m
en-suite 2.29m x 1.58m
bed 2 3.88m x 2.70m
bed 3 2.91m x 2.70m
bed 4 3.00m x 2.80m
bathroom 2.74m x 1.64m

the lymm
4 bed detached with garage

ANWYL
thoughtful homes

NEW HOMES QUALITY CODE

NEW HOMES OMBUDSMAN SERVICE

www.anwylhomes.co.uk

Anwyl Homes is a Registered Developer with the NHQB. This is a computer-generated image of the lymm, elevation treatment may vary. Room sizes are approximate, dimensions are taken from the longest room point (please consult homes advisor for measurement points). Plots may be handed and any garages may be single or double. Kitchen and bathroom layouts are indicative. These plans are correct at the time of going to press, but may be subject to change during construction. Please ensure that you check for specific plot details. 01/11/22.

everything considered.