

ANWYL  
*thoughtful homes*

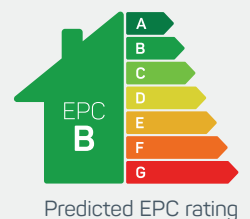


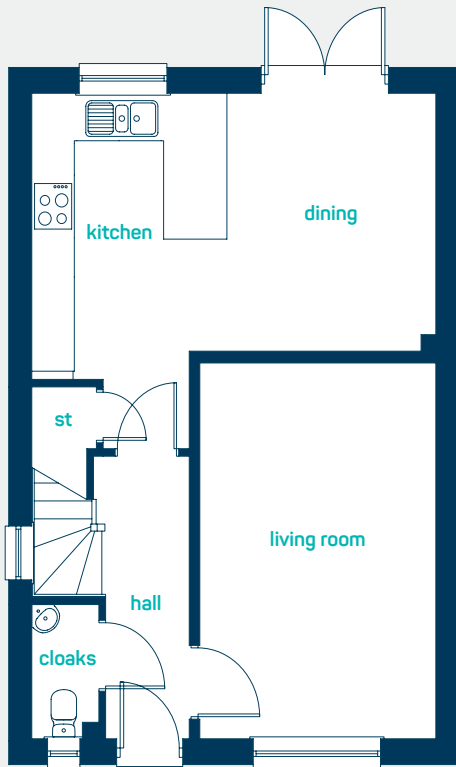
## the bunbury

3 bed detached

Perfect as a *family* starter home or for first-time buyers. Key features include 3 double bedrooms and an open plan kitchen family room perfect for modern living.

[www.anwylhomes.co.uk](http://www.anwylhomes.co.uk)

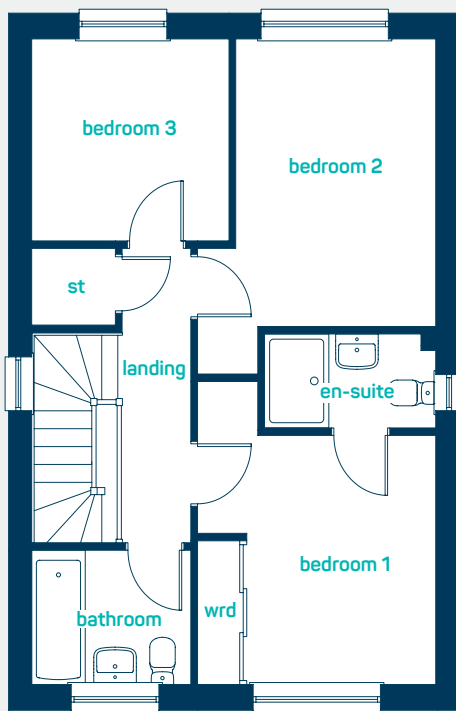




 perfect for  
new families

### ground floor

kitchen/dining	18'10" x 12'0"
living room	11'0" x 15'9"
cloaks	3'2" x 5'7"
kitchen/dining	5.75m x 3.64m
living room	3.36m x 4.79m
cloaks	0.96m x 1.71m



### first floor

bedroom 1	11'1" x 12'8"
(into door)	
en-suite	8'0" x 3'11"
bedroom 2	11'1" x 14'0"
(into door)	
bedroom 3	9'3" x 8'5"
bathroom	7'5" x 5'7"
bedroom 1	3.39m x 3.86m
(into door)	
en-suite	2.44m x 1.2m
bedroom 2	3.39m x 4.27m
(into door)	
bedroom 3	2.81m x 2.57m
bathroom	2.26m x 1.71m

 **the bunbury**  
3 bed detached

**ANWYL**  
thoughtful homes

  
NEW  
HOMES  
QUALITY  
CODE

  
NEW HOMES  
OMBUDSMAN  
SERVICE

[www.anwylhomes.co.uk](http://www.anwylhomes.co.uk)

Anwyl Homes is a Registered Developer with the NHQB. This is a computer-generated image of the bunbury detached (hipped), elevation treatment may vary. Room sizes are approximate, dimensions are taken from the longest room point (please consult homes advisor for measurement points). Plots may be handed and any garages may be single or double. Kitchen and bathroom layouts are indicative. These plans are correct at the time of going to press, but may be subject to change during construction. Please ensure that you check for specific plot details. 18/07/23.

*everything considered.*