

ANWYL
thoughtful homes

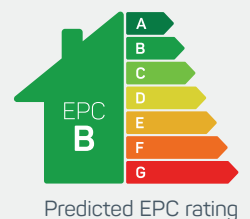


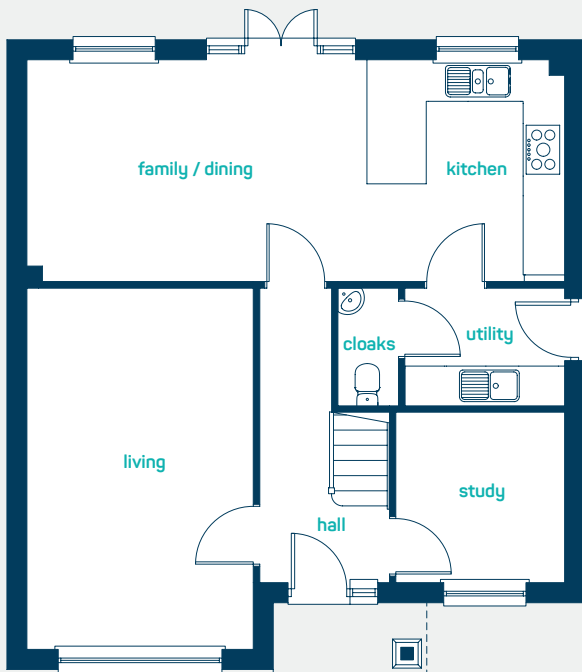
the oakmere

4 bed detached

An *impressive* 4 bedroom detached home, ideal for families.
Key features include large open plan kitchen, dining and family room with a separate living room, utility and study.

www.anwylhomes.co.uk

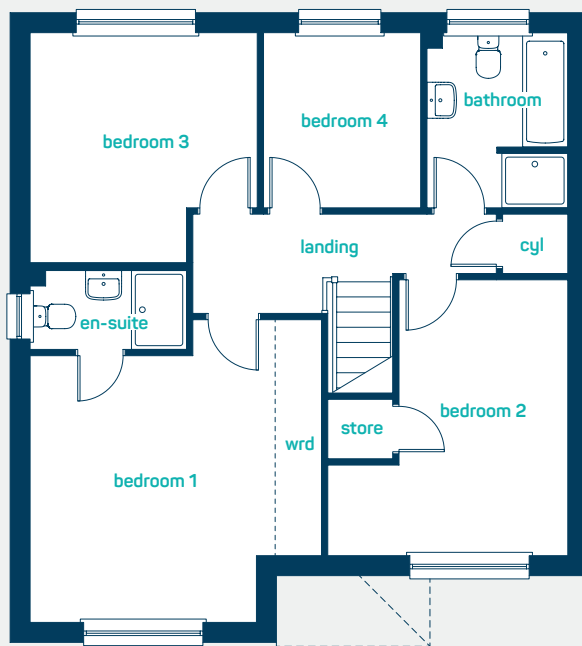




feature
high ceilings

ground floor

kitchen/dining	26'7" x 10'11"
utility	7'11" x 5'9"
living room	11'1" x 17'10"
study	8'6" x 8'5"
cloaks	3'0" x 5'9"
kitchen/dining	8.11m x 3.32m
utility	2.40m x 1.76m
living room	3.38m x 5.43m
study	2.59m x 2.56m
cloaks	0.92m x 1.76m



first floor

bedroom 1	14'5" x 15'0"
en-suite	7'9" x 3'11"
bedroom 2	11'10" x 13'8"
bedroom 3	11'3" x 11'4"
bedroom 4	7'10" x 8'8"
bathroom	6'11" x 8'8"
bedroom 1	4.40m x 4.57m
en-suite	2.35m x 1.20m
bedroom 2	3.62m x 4.16m
bedroom 3	3.42m x 3.46m
bedroom 4	2.38m x 2.63m
bathroom	2.11m x 2.63m

the oakmere
4 bed detached

ANWYL
thoughtful homes

NEW HOMES QUALITY CODE

NEW HOMES OMBUDSMAN SERVICE

www.anwylhomes.co.uk

Anwyl Homes is a Registered Developer with the NHQB. This is a computer-generated image of the oakmere, elevation treatment may vary. Room sizes are approximate, dimensions are taken from the longest room point (please consult homes advisor for measurement points). Plots may be handed and any garages may be single or double. Kitchen and bathroom layouts are indicative. These plans are correct at the time of going to press, but may be subject to change during construction. Please ensure that you check for specific plot details. 17/08/23.

everything considered.