

ANWYL
thoughtful homes

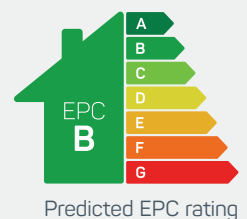


the bunbury

3 bed semi-detached

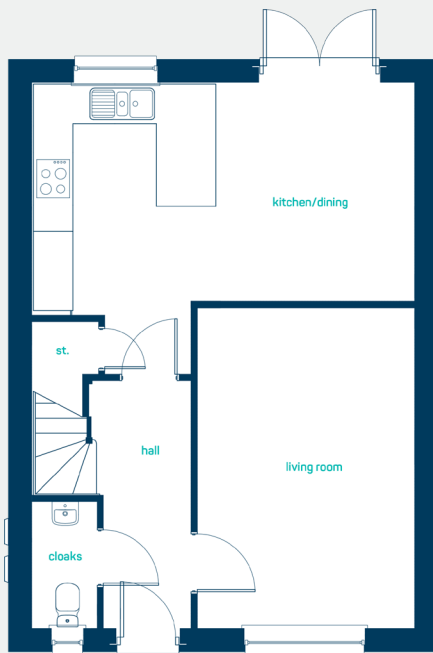
Perfect as a *family* starter home or for first-time buyers. Key features include 3 double bedrooms and an open plan kitchen family room perfect for modern living.

www.anwylhomes.co.uk



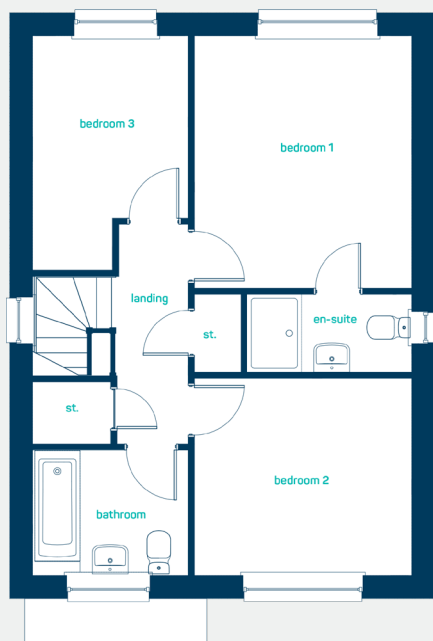


perfect for
new families



ground floor

| | |
|----------------|----------------|
| kitchen/dining | 18'11" x 11'3" |
| living room | 10'8" x 15'10" |
| cloaks | 3'2" x 6'3" |
| kitchen/dining | 5.76m x 3.43m |
| living room | 3.25m x 4.82m |
| cloaks | 0.97m x 1.90m |



first floor

| | |
|-------------|----------------|
| bedroom 1 | 10'10" x 12'8" |
| (into door) | |
| en-suite | 8'2" x 3'11" |
| bedroom 2 | 10'10" x 9'10" |
| (into door) | |
| bedroom 3 | 7'9" x 11'9" |
| bathroom | 7'9" x 6'3" |
| bedroom 1 | 3.31m x 3.85m |
| (into door) | |
| en-suite | 2.50m x 1.20m |
| bedroom 2 | 3.31m x 3.00m |
| (into door) | |
| bedroom 3 | 2.36m x 3.57m |
| bathroom | 2.36m x 1.90m |

the bunbury
3 bed semi-detached

www.anwylhomes.co.uk

ANWYL
thoughtful homes

**NEW
HOMES
QUALITY
CODE**

**NEW HOMES
OMBUDSMAN
SERVICE**

Anwyl Homes is a Registered Developer with the NHQB. This is a computer-generated image of the bunbury, elevation treatment may vary. Room sizes are approximate, dimensions are taken from the longest room point (please consult homes advisor for measurement points). Plots may be handed and any garages may be single or double. Kitchen and bathroom layouts are indicative. These plans are correct at the time of going to press, but may be subject to change during construction. Please ensure that you check for specific plot details.
15/11/23.

everything considered.