

ANWYL
thoughtful homes

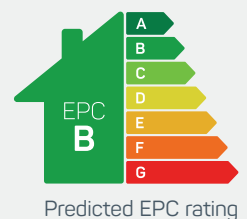


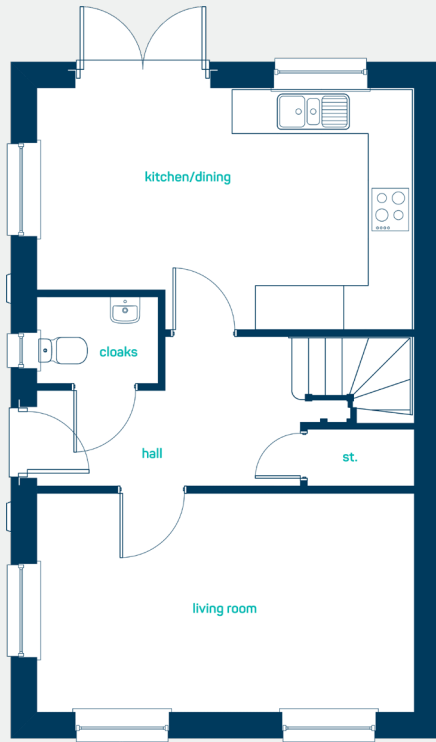
the epsom

3 bed semi-detached

A *modern* 3 bed home, perfect for growing families. Key features include an open plan kitchen diner, separate living room, French doors leading to the garden and master bedroom with en-suite.

www.anwylhomes.co.uk



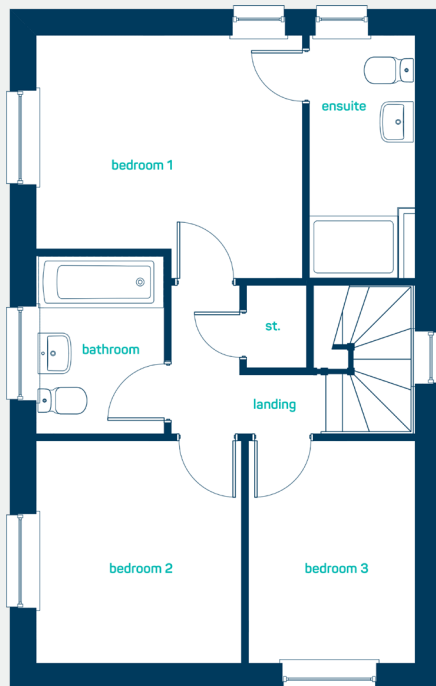


ideal for
growing families

ground floor

kitchen/dining 16'8" x 10'9"
living room 16'8" x 9'8"
cloaks 5'4" x 3'10"

kitchen/dining 5.09m x 3.27m
living room 5.09m x 2.93m
cloaks 1.63m x 1.18m



first floor

bedroom 1 11'9" x 10'9"
en-suite 4'7" x 10'9"
bedroom 2 9'1" x 9'10"
bedroom 3 7'4" x 9'10"
bathroom 5'7" x 7'11"

bedroom 1 3.58m x 3.27m
en-suite 1.41m x 3.27m
bedroom 2 2.76m x 2.99m
bedroom 3 2.23m x 2.99m
bathroom 1.71m x 2.41m

the epsom
3 bed semi-detached

ANWYL
thoughtful homes

**NEW
HOMES
QUALITY
CODE**

**NEW HOMES
OMBUDSMAN
SERVICE**

www.anwylhomes.co.uk

Anwyl Homes is a Registered Developer with the NHQB. This is a computer-generated image of the epsom, elevation treatment may vary. Room sizes are approximate, dimensions are taken from the longest room point (please consult homes advisor for measurement points). Plots may be handed and any garages may be single or double. Kitchen and bathroom layouts are indicative. These plans are correct at the time of going to press, but may be subject to change during construction. Please ensure that you check for specific plot details. 03/09/23.

everything considered.