

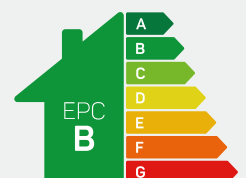
ANWYL
thoughtful homes



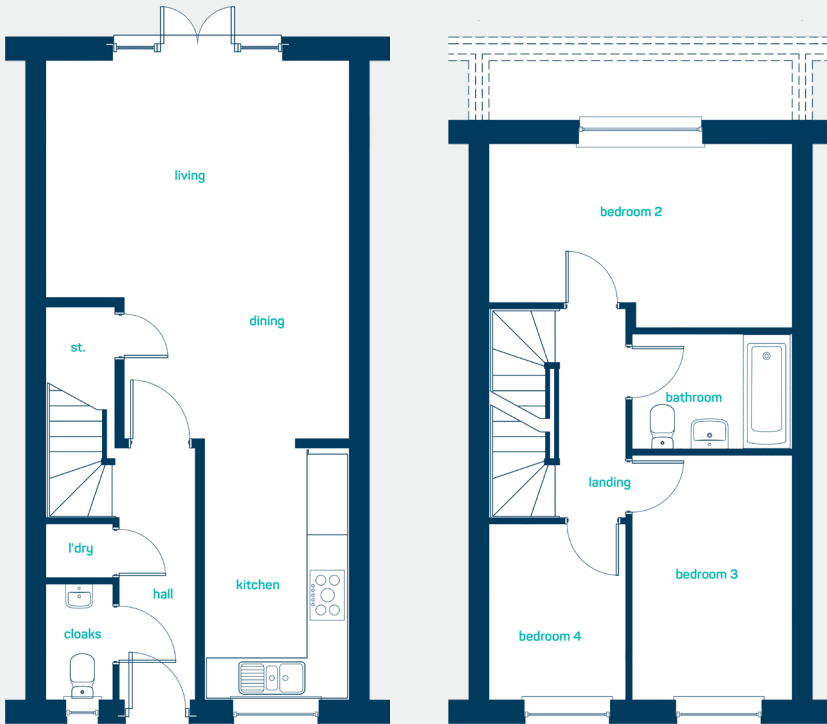
the euxton

4 bed semi-detached

www.anwylhomes.co.uk



Predicted EPC rating



modern
open plan living

ground floor

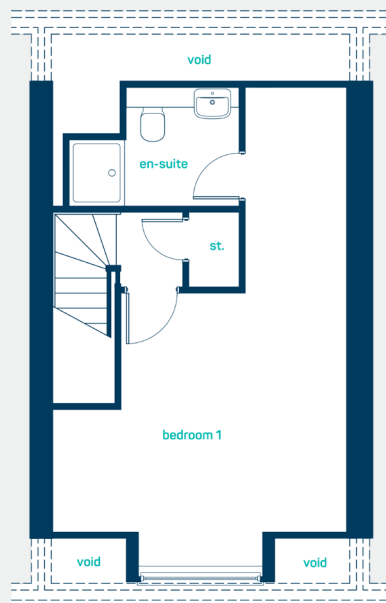
kitchen	6'11" x 12'2"
living/dining room	14'7" x 18'4"
laundry	3'2" x 2'8"
cloaks	3'2" x 5'7"

kitchen	2.09m x 3.70m
living/dining room	4.45m x 5.58m
laundry	0.97m x 0.80m
cloaks	0.97m x 1.70m

first floor

bedroom 2	14'7" x 8'11"
bedroom 3	7'9" x 11'11"
bedroom 4	6'7" x 8'6"
bathroom	7'9" x 5'7"

bedroom 2	4.45m x 2.72m
bedroom 3	2.35m x 3.62m
bedroom 4	2.00m x 2.60m
bathroom	2.35m x 1.71m



second floor

bedroom 1	14'6" x 13'7"
en-suite	8'5" x 5'10"

bedroom 1	4.42m x 4.14m
en-suite	2.56m x 1.79m

the euxton
4 bed semi-detached

www.anwylhomes.co.uk

ANWYL
thoughtful homes

**NEW
HOMES
QUALITY
CODE**

**NEW HOMES
OMBUDSMAN
SERVICE**

Anwyl Homes is a Registered Developer with the NHQB. This is a computer-generated image of the euxton, elevation treatment may vary. Room sizes are approximate, dimensions are taken from the longest room point (please consult homes advisor for measurement points). Plots may be handed and any garages may be single or double. Kitchen and bathroom layouts are indicative. These plans are correct at the time of going to press, but may be subject to change during construction. Please ensure that you check for specific plot details. 15/11/23.

everything considered.