

ANWYL  
thoughtful homes

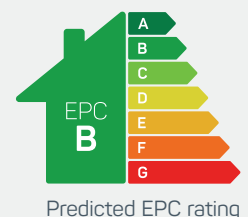


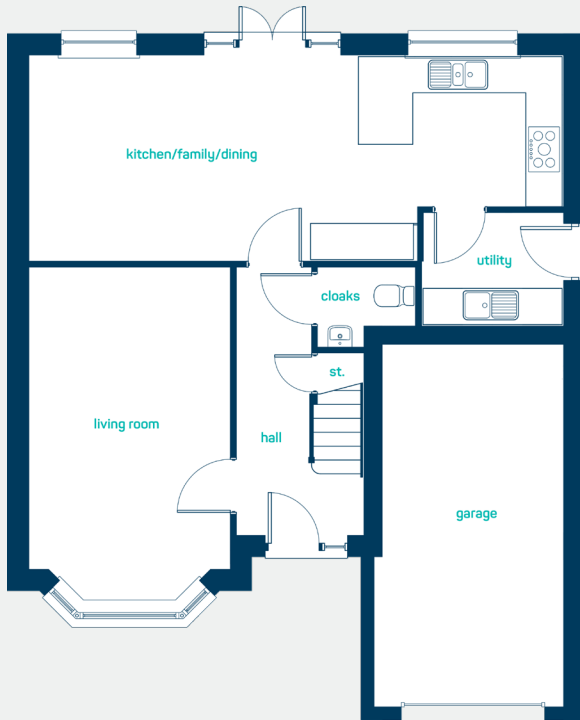
## the henley

4 bed detached with garage

A *traditional* 4 bedroom detached home. Designed to capture the essence of traditional house building with lovely high ceilings, beautiful bay windows and a roofed porch. Step inside and the henley is thoughtfully designed for modern family life with open plan family space, separate living room and generously sized bedrooms on offer.

[www.anwylhomes.co.uk](http://www.anwylhomes.co.uk)



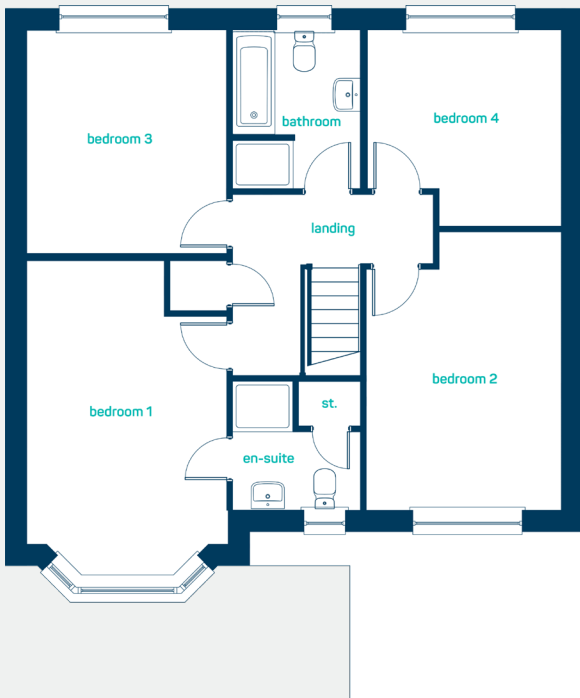


large open plan  
*family space*

### ground floor

kitchen/dining/ family	28'11" x 11'0"
utility	7'6" x 6'1"
living room	10'9" x 18'1"
cloaks	5'3" x 4'3"

kitchen/dining/ family	8.80m x 3.36m
utility	2.30m x 1.85m
living room	3.28m x 5.51m
cloaks	1.60m x 1.30m



### first floor

bedroom 1	10'9" x 17'2"
en-suite	6'11" x 6'11"
bedroom 2	10'6" x 15'0"
bedroom 3	10'9" x 12'1"
bedroom 4	10'5" x 10'7"
bathroom	6'11" x 8'6"

bedroom 1	3.28m x 5.22m
en-suite	2.12m x 2.11m
bedroom 2	3.20m x 4.58m
bedroom 3	3.28m x 3.67m
bedroom 4	3.18m x 3.22m
bathroom	2.11m x 2.60m

**the henley**  
4 bed detached with garage

**ANWYL**  
thoughtful homes

**NEW  
HOMES  
QUALITY  
CODE**

**NEW HOMES  
OMBUDSMAN  
SERVICE**

[www.anwylhomes.co.uk](http://www.anwylhomes.co.uk)

Anwyl Homes is a Registered Developer with the NHQB. This is a computer-generated image of the henley, elevation treatment may vary. Room sizes are approximate, dimensions are taken from the longest room point (please consult homes advisor for measurement points). Plots may be handed and any garages may be single or double. Kitchen and bathroom layouts are indicative. These plans are correct at the time of going to press, but may be subject to change during construction. Please ensure that you check for specific plot details.  
03/09/23

*everything considered.*