

ANWYL
thoughtful homes

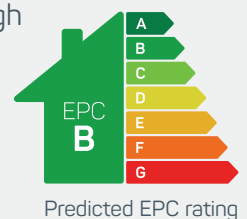


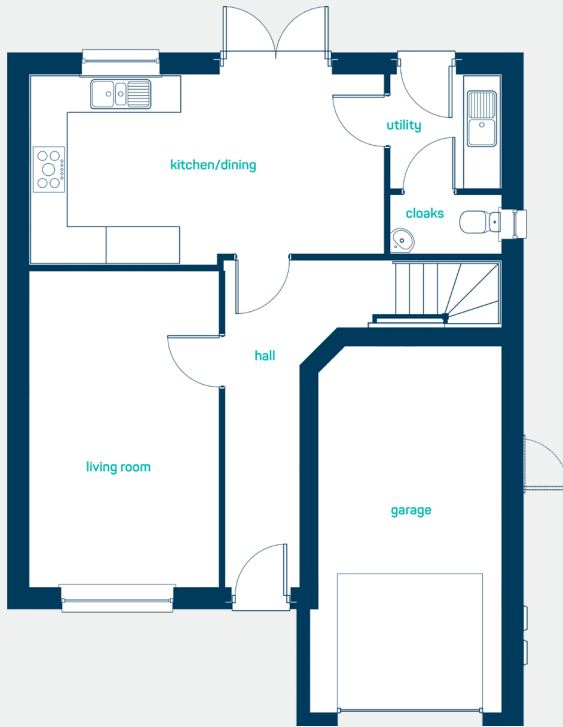
the lymm

4 bed detached with garage

A *spacious* 4-bedroom detached home. The Lymm is thoughtfully designed to make the most of the space available, providing a well-planned open plan living space and a separate lounge in which to relax. Boasting 4 generously sized bedrooms, integral garage, lovely high ceilings and a roofed porch the lymm is designed for today's family.

www.anwylhomes.co.uk



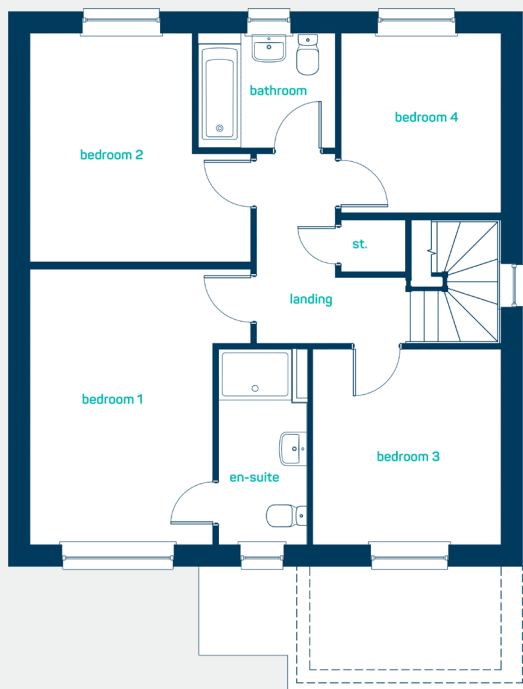


large open plan
family space

ground floor

kitchen/dining	19'0" x 10'1"
utility	5'11" x 6'1"
living room	10'1" x 16'10"
cloaks	5'11" x 3'1"

kitchen/dining	5.78m x 3.07m
utility	1.80m x 1.85m
living room	3.08m x 5.13m
cloaks	1.80m x 0.95m



first floor

bedroom 1	11'10" x 14'9"
en-suite	4'9" x 10'5"
bedroom 2	11'10" x 12'3"
bedroom 3	10'1" x 10'5"
bedroom 4	8'6" x 9'8"
bathroom	7'5" x 6'1"

bedroom 1	3.60m x 4.50m
en-suite	1.45m x 3.19m
bedroom 2	3.60m x 3.73m
bedroom 3	3.06m x 3.19m
bedroom 4	2.60m x 2.95m
bathroom	2.25m x 1.86m

the lymm
4 bed detached with garage

ANWYL
thoughtful homes

NEW HOMES QUALITY CODE

NEW HOMES OMBUDSMAN SERVICE

www.anwylhomes.co.uk

Anwyl Homes is a Registered Developer with the NHQB. This is a computer-generated image of the lymm, elevation treatment may vary. Room sizes are approximate, dimensions are taken from the longest room point (please consult homes advisor for measurement points). Plots may be handed and any garages may be single or double. Kitchen and bathroom layouts are indicative. These plans are correct at the time of going to press, but may be subject to change during construction. Please ensure that you check for specific plot details.
03/09/23

everything considered.