

ANWYL
thoughtful homes

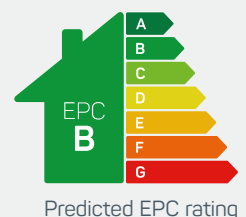


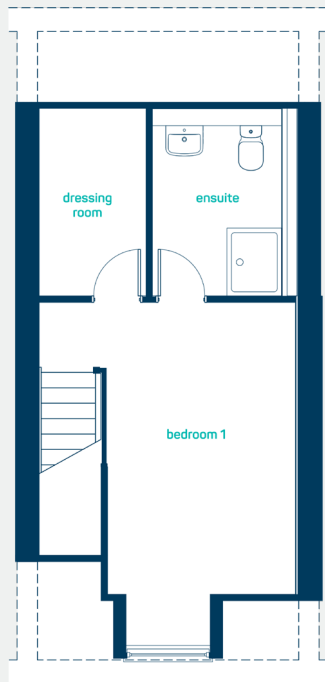
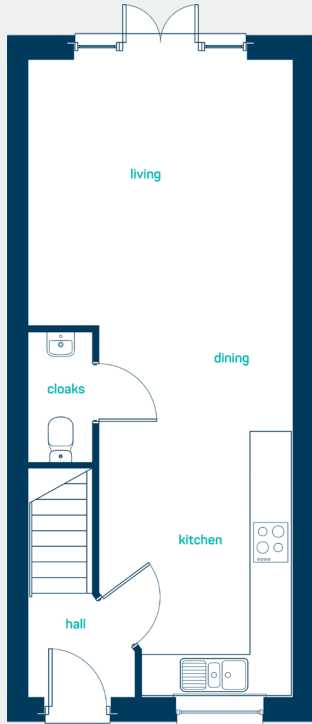
the snowdon

3 bed semi-detached/mews

A 2.5 storey 3 bedroom semi-detached home. Key features include *open plan* kitchen, living and dining room with French doors to the rear, 3 bedrooms including master bedroom with en-suite, *dressing room* and separate family bathroom.

www.anwylhomes.co.uk





modern
open plan living

ground floor

kitchen/dining 9'2" x 17'9"
living room 12'6" x 12'8"
cloak 3'0" x 6'3"

kitchen/dining 2.79m x 5.39m
living room 3.80m x 3.85m
cloak 0.91m x 1.90m

first floor

bedroom 2 12'6" x 11'11"
bedroom 3 5'10" x 10'5"
bathroom 5'10" x 7'5"

bedroom 2 3.80m x 3.63m
bedroom 3 1.77m x 3.16m
bathroom 1.77m x 2.27m

second floor

bedroom 1 12'5" x 16'8"
dressing room 5'2" x 9'1"
en-suite 6'3" x 9'1"

bedroom 1 3.77m x 5.08m
dressing room 1.57m x 2.77m
en-suite 1.90m x 2.77m

the snowdon
3 bed semi-detached/mews

www.anwylhomes.co.uk

ANWYL
thoughtful homes

NEW HOMES QUALITY CODE

NEW HOMES OMBUDSMAN SERVICE

Anwyl Homes is a Registered Developer with the NHQB. This is a computer-generated image of the snowdon, elevation treatment may vary. Room sizes are approximate, dimensions are taken from the longest room point (please consult homes advisor for measurement points). Plots may be handed and any garages may be single or double. Kitchen and bathroom layouts are indicative. These plans are correct at the time of going to press, but may be subject to change during construction. Please ensure that you check for specific plot details. 03/09/23.

everything considered.