



The Eccleston

3 bed detached

Start your future in this comfy three-bedroom detached home. Perfect for growing families and first-time buyers, the Eccleston features beautifully designed living spaces. The ground floor offers a spacious lounge and an open-plan kitchen/diner with French doors to the garden. Upstairs, there are three bedrooms, a well-appointed family bathroom, and an en-suite to the main bedroom.

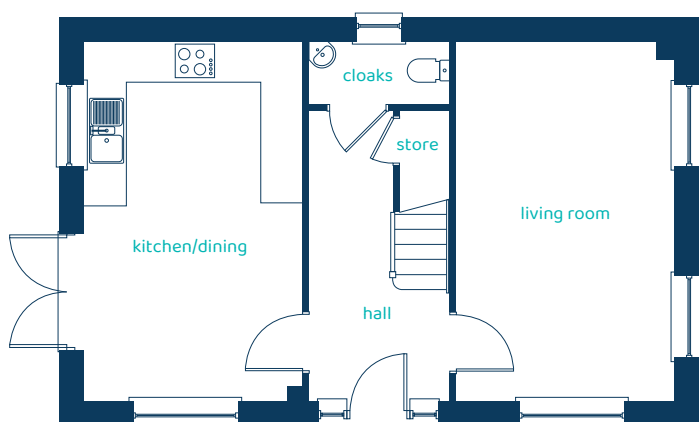


Predicted EPC rating



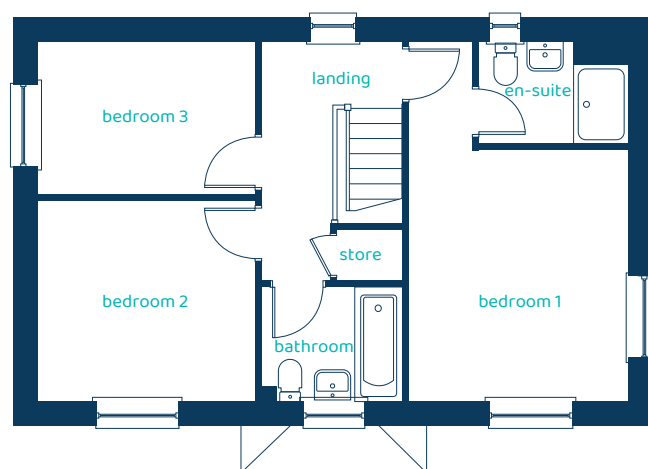
anwylhomes.co.uk

Ground Floor Plan



Room	Imperial	Metric
Kitchen/Dining	10'9" x 17'10"	3.26m x 5.42m
Living Room	10'9" x 17'10"	3.26m x 5.42m
Cloaks	6'10" x 3'1"	2.08m x 0.95m

First Floor Plan



Room	Imperial	Metric
Bedroom 1	10'11" x 12'5"	3.32m x 3.79m
En-suite	7'5" x 5'1"	2.26m x 1.54m
Bedroom 2	10'9" x 9'11"	3.28m x 3.02m
Bedroom 3	10'8" x 7'7"	3.25m x 2.31m
Bathroom	6'11" x 5'7"	2.10m x 1.71m

The Eccleston

3 bed detached

Anwyl Homes is a Registered Developer with the NHQB. This is a computer-generated image of the Eccleston, elevation treatment may vary. Room sizes are approximate, dimensions are taken from the longest room point (please consult homes advisor for measurement points). Plots may be handed and any garages may be single or double. Kitchen and bathroom layouts are indicative. These plans are correct at the time of going to press, but may be subject to change during construction. Please ensure that you check for specific plot details. Kitchen islands are an optional upgrade to this house type. 14/04/25.

