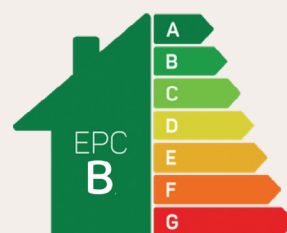




The Evesham

4 bed detached

Superb design and ample space make this four-bedroom home ideal for families. With high ceilings and impressive proportions, it offers plenty of room to relax. Beautiful windows brighten the cosy living room, and the kitchen/diner's French doors open to the rear garden. The Evesham also includes a downstairs study, perfect for home working. Upstairs, four double bedrooms provide space for everyone, with an en-suite in the main bedroom and a luxurious family bathroom completing this spacious property.

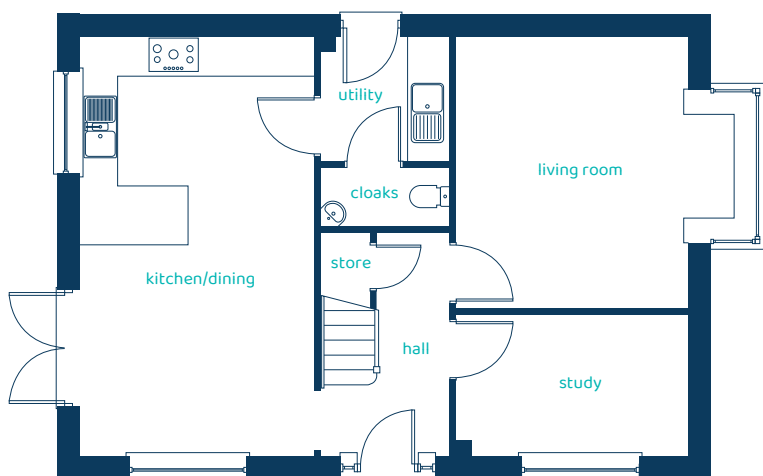


Predicted EPC rating



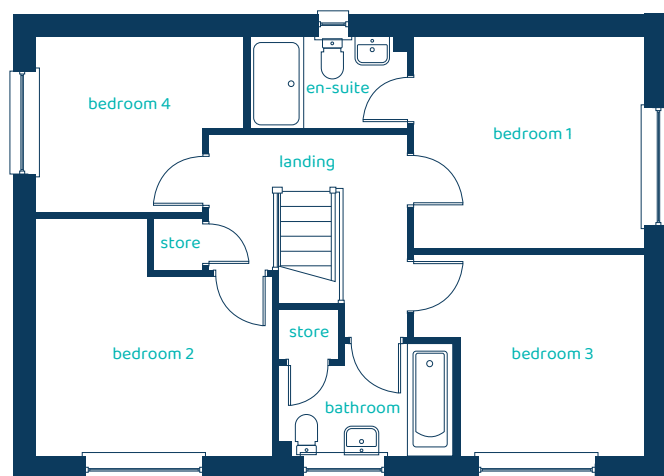
anwyhomes.co.uk

Ground Floor Plan



Room	Imperial	Metric
Kitchen/Dining	11'9" x 21'1"	3.57m x 6.43m
Living Room	14' 2" x 13' 9"	4.33m x 4.18m
Study	11' 7" x 7' 1"	3.54m x 2.16m
Utility	6' 5" x 6' 3"	1.95m x 1.90m
Cloaks	6' 5" x 3' 0"	1.95m x 0.92m

First Floor Plan



Room	Imperial	Metric
Bedroom 1	11' 8" x 10' 8"	3.55m x 3.25m
En-suite	8' 0" x 4' 7"	2.43m x 1.40m
Bedroom 2	11'11" x 12'0"	3.63m x 3.65m
Bedroom 3	11'8" x 10'2"	3.55m x 3.09m
Bedroom 4	10' 5" x 8' 10"	3.17m x 2.69m
Bathroom	8' 10" x 5' 7"	2.70m x 1.71m

The Evesham

4 bed detached

Anwyl Homes is a Registered Developer with the NHQB. This is a computer-generated image of the Evesham, elevation treatment may vary. Room sizes are approximate, dimensions are taken from the longest room point (please consult homes advisor for measurement points). Plots may be handed and any garages may be single or double. Kitchen and bathroom layouts are indicative. These plans are correct at the time of going to press, but may be subject to change during construction. Please ensure that you check for specific plot details. Kitchen islands are an optional upgrade to this house type. 14/04/25.

