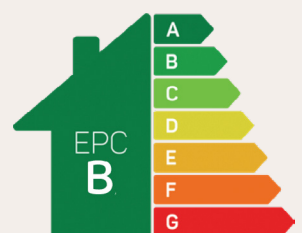




The Hartford

4 bed detached

Growing families will love this superb four-bedroom detached home. The large open-plan kitchen/dining area is perfect for busy families, and the separate living room is great for relaxing. The kitchen's breakfast bar enjoys light from elegant French doors leading to the garden. Upstairs, there are four double bedrooms. The spacious main bedroom features an en-suite for unwinding, and a well-equipped family bathroom ensures everyone can get ready with ease.

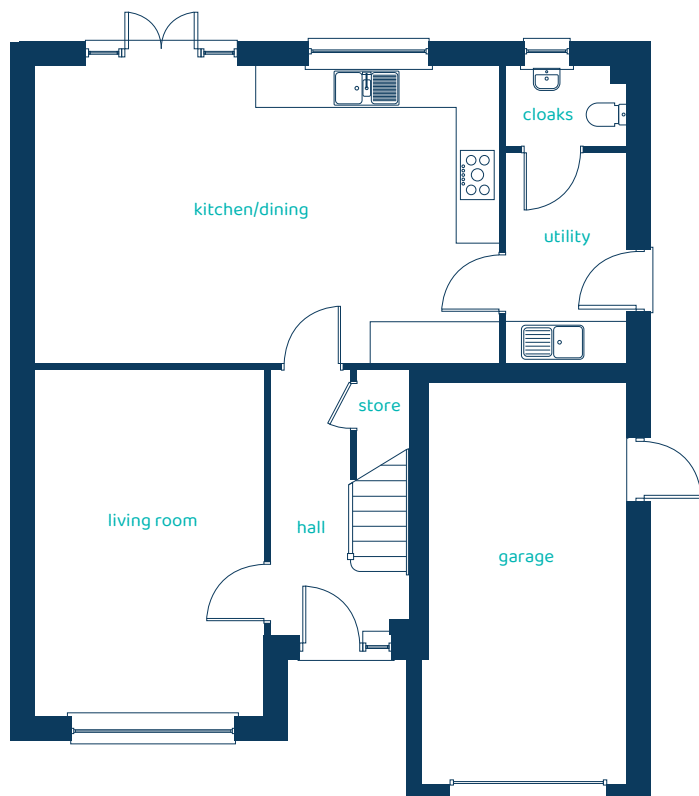


Predicted EPC rating

ANWYL

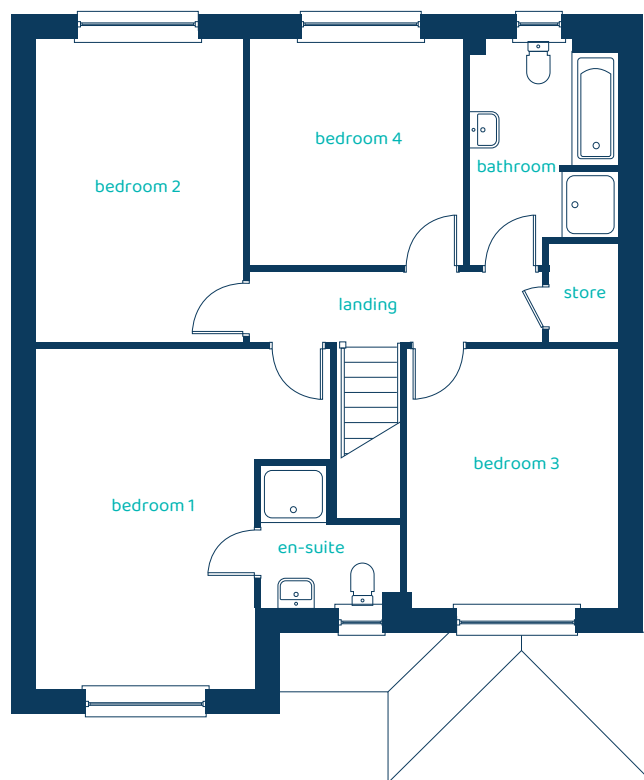
anwyhomes.co.uk

Ground Floor Plan



Room	Imperial	Metric
Kitchen/Dining	22'6" x 14'8"	6.85m x 4.46m
Living Room	10'9" x 17'1"	3.29m x 5.20m
Utility	5'11" x 10'5"	1.80m x 3.17m
Cloaks	5'11" x 3'11"	1.80m x 1.20m
Garage	9'10" x 20'0"	3.00m x 6.09m

First Floor Plan



Room	Imperial	Metric
Bedroom 1	14'7" x 16'10"	4.44m x 5.14m
En-suite	6'11" x 6'11"	2.12m x 2.12m
Bedroom 2	10'3" x 14'11"	3.11m x 4.55m
Bedroom 3	10'6" x 12'10"	3.20m x 3.90m
Bedroom 4	10'7" x 11'3"	3.22m x 3.42m
Bathroom	7'5" x 11'3"	2.25m x 3.42m

The Hartford

4 bed detached

Anwyl Homes is a Registered Developer with the NHQB. This is a computer-generated image of the Hartford, elevation treatment may vary. Room sizes are approximate, dimensions are taken from the longest room point (please consult homes advisor for measurement points). Plots may be handed and any garages may be single or double. Kitchen and bathroom layouts are indicative. These plans are correct at the time of going to press, but may be subject to change during construction. Please ensure that you check for specific plot details. Kitchen islands are an optional upgrade to this house type. 14/04/25.

