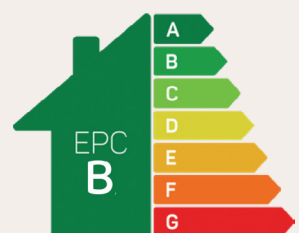




# The Oakmere

## 4 bed semi detached

Generous proportions and high ceilings make The Oakmere perfect for families. Its expansive kitchen/dining area welcomes everyone with room to spare, and the separate living room and study provide even more space. Upstairs, there are four bedrooms, including a master with an en-suite and fitted wardrobes, plus a luxurious family bathroom with quality fixtures.

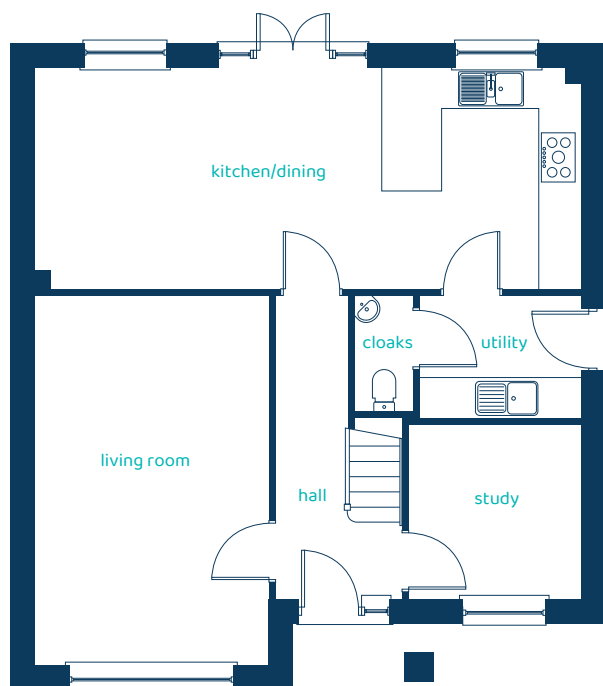


Predicted EPC rating



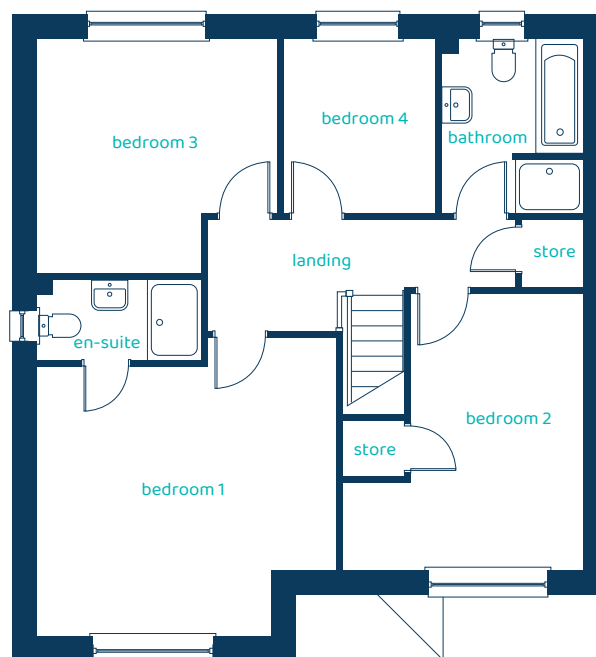
[anwyhomes.co.uk](http://anwyhomes.co.uk)

## Ground Floor Plan



Room	Imperial	Metric
Kitchen/Dining	27'0" x 10'10"	8.24m x 3.31m
Living Room	11'6" x 18'3"	3.51m x 5.56m
Study	8'6" x 8'7"	2.59m x 2.62m
Utility	7'11" x 6'0"	2.42m x 1.83m
Cloaks	2'11" x 5'8"	0.90m x 1.72m

## First Floor Plan



Room	Imperial	Metric
Bedroom 1	14'10" x 14'10"	4.52m x 4.51m
En-suite	8'1" x 3'11"	2.47m x 1.20m
Bedroom 2	11'10" x 13'8"	3.62m x 4.16m
Bedroom 3	11'11" x 11'7"	3.62m x 3.54m
Bedroom 4	7'7" x 8'8"	2.31m x 2.63m
Bathroom	6'11" x 8'8"	2.11m x 2.63m

# The Oakmere

## 4 bed semi detached

Anwyl Homes is a Registered Developer with the NHQB. This is a computer-generated image of the Oakmere, elevation treatment may vary. Room sizes are approximate, dimensions are taken from the longest room point (please consult homes advisor for measurement points). Plots may be handed and any garages may be single or double. Kitchen and bathroom layouts are indicative. These plans are correct at the time of going to press, but may be subject to change during construction. Please ensure that you check for specific plot details. Kitchen islands are an optional upgrade to this house type. 14/04/25.

