

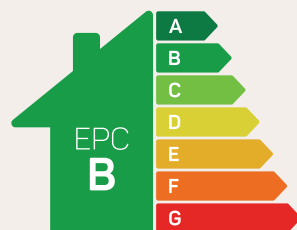


# The Bewsey

## 1 bed semi-detached

A traditionally styled semi-detached home with a modern interior and comfortable open-plan living space.

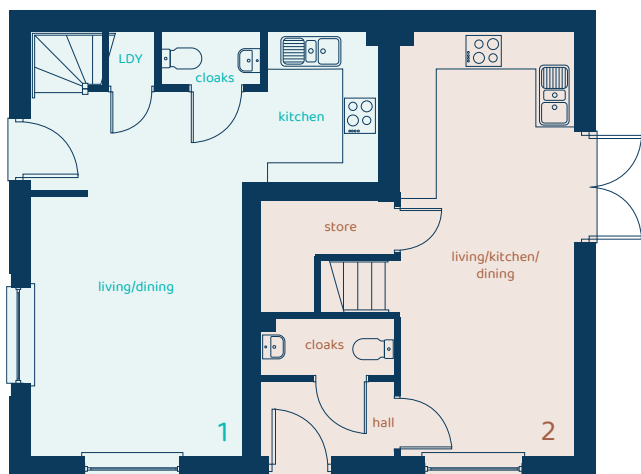
**ANWYL**



Predicted EPC rating

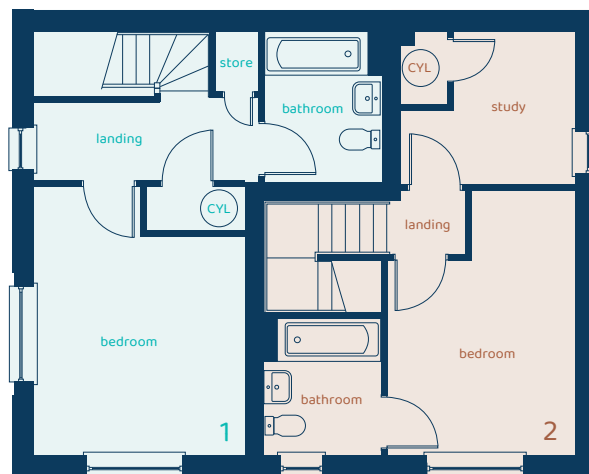
[anwyllhomes.co.uk](http://anwyllhomes.co.uk)

## Ground Floor Plan



Room	Imperial	Metric
Living/Dining	11'1" x 15'1"	3.38m x 4.59m
Kitchen	8'0" x 6'3"	2.50m x 1.86m
Cloaks	2'10" x 5'5"	0.85m x 1.64m
Living/ Kitchen/Dining	22'10" x 9'4"	6.96m x 2.85m
Cloaks	3'1" x 7'1"	0.93m x 2.15m

## First Floor Plan



Room	Imperial	Metric
Bedroom	14'6" x 11'4"	4.42m x 3.45m
Bathroom	8'0" x 6'3"	2.45m x 1.91m
Bedroom	14'4" x 10'2"	4.36m x 3.09m
Study	8'3" x 9'4"	2.51m x 2.85m
Bathroom	7'4" x 6'3"	2.24m x 1.91m

# The Bewsey

## 1 bed semi-detached

Anwyl Homes is a registered developer with the NHQB. The images on this literature are computer-generated. Specific plots may be 'handed' (mirrored), detached/semi-detached, elevation treatment/roof materials may vary, and any garages may be single or double. Room sizes are approximate, dimensions are taken from the longest room point and are for guidance only. Kitchen and bathroom layouts are indicative. These plans are correct at the time of creation but may be subject to change during construction. Please speak to your Homes Adviser for more details. The Bewsey 11/04/25.

