



The Hampton

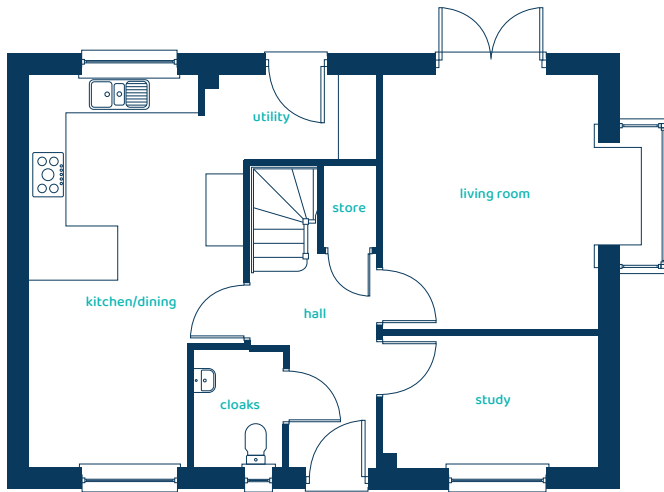
4 bed detached

Traditional styling and four generously-sized bedrooms define this elegant and impressive family home.



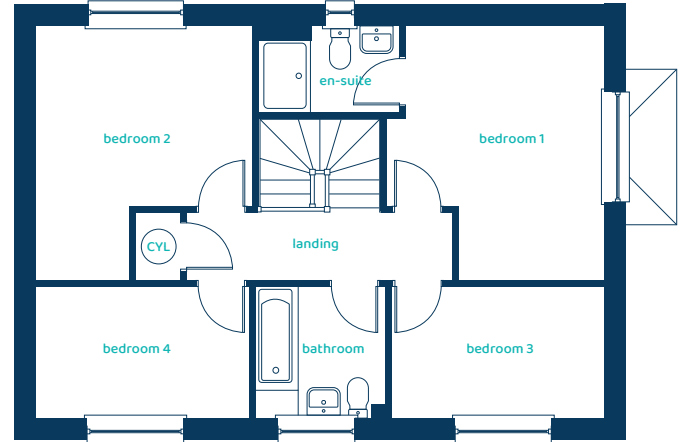
anwylhomes.co.uk

Ground Floor Plan



Room	Imperial	Metric
Kitchen/Dining	11'6" x 21'1"	3.51m x 6.43m
Living Room	14'1" x 13'9"	4.30m x 4.18m
Study	11'6" x 7'1"	3.51m x 2.16m
Utility	7'2" x 4'5"	2.18m x 1.35m
Cloaks	4'9" x 6'3"	1.45m x 1.90m

First Floor Plan



Room	Imperial	Metric
Bedroom 1	11'9" x 13'9"	3.57m x 4.19m
En-suite	7'8" x 4'8"	2.35m x 1.43m
Bedroom 2	11'9" x 13'9"	3.57m x 4.19m
Bedroom 3	11'6" x 7'1"	3.50m x 2.15m
Bedroom 4	11'6" x 7'1"	3.52m x 2.15m
Bathroom	7'1" x 7'1"	2.15m x 2.15m

The Hampton

4 bed detached

Anwyl Homes is a registered developer with the NHQB. The images on this literature are computer-generated. Specific plots may be 'handed' (mirrored), detached/semi-detached, elevation treatment/roof materials may vary, and any garages may be single or double. Room sizes are approximate, dimensions are taken from the longest room point and are for guidance only. Kitchen and bathroom layouts are indicative. These plans are correct at the time of creation but may be subject to change during construction. Please speak to your Homes Adviser for more details. The Hampton 5/06/25.



anwylhomes.co.uk