



# The Audlem

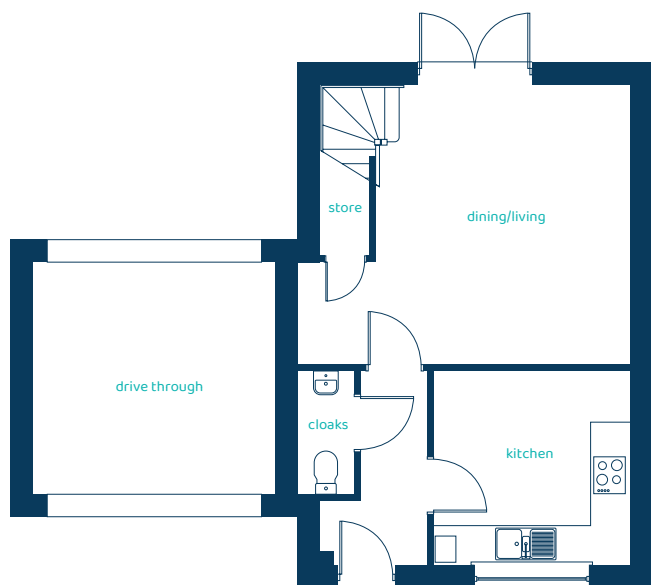
## 3 bed semi-detached

A wonderful three-bedroom home that's ideal for young families and perfect for downsizers.



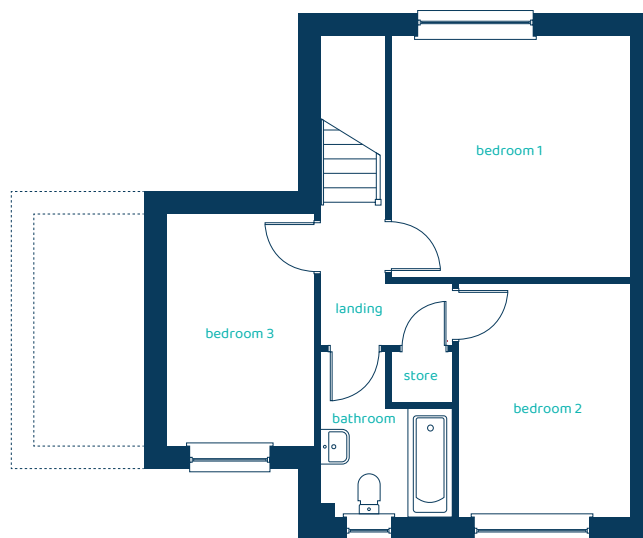
[anwylhomes.co.uk](https://anwylhomes.co.uk)

## Ground Floor Plan



Room	Imperial	Metric
Dining/Living	18'3" x 12'0"	5.56m x 3.65m
Kitchen	11'3" x 8'10"	3.42m x 2.69m
Cloaks	5'10" x 3'2"	1.79m x 0.98m

## First Floor Plan



Room	Imperial	Metric
Bedroom 1	16'6" x 9'2"	5.03m x 2.78m
Bedroom 2	11'8" x 9'4"	3.55m x 2.83m
Bedroom 3	11'10" x 6'8"	3.62m x 2.03m
Bathroom	7'10" x 7'9"	2.83m x 2.36m

# The Audlem

## 2 bed semi-detached / detached

Anwyl Homes is a registered developer with the NHQB. The images on this literature are computer-generated. Specific plots may be 'handed' (mirrored), detached/semi-detached, elevation treatment/roof materials may vary, and any garages may be single or double. Room sizes are approximate, dimensions are taken from the longest room point and are for guidance only. Kitchen and bathroom layouts are indicative. These plans are correct at the time of creation but may be subject to change during construction. Please speak to your Homes Adviser for more details. The Audlem 29/08/25.

