

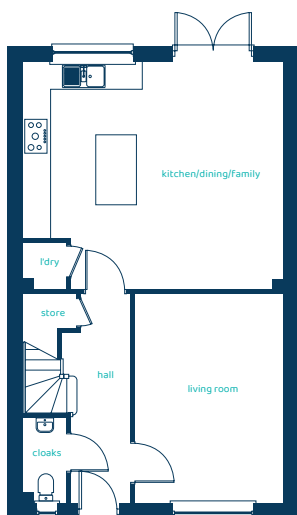


The Cheltenham

4 bed semi-detached / detached

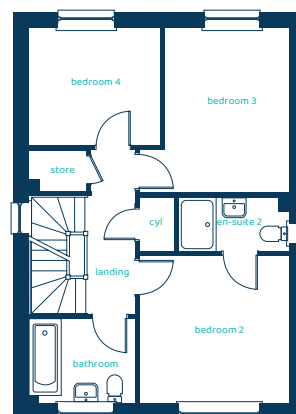
With its blend of traditional styling and modern, open-plan living, the Cheltenham is a welcoming place to come home to.

Ground Floor Plan

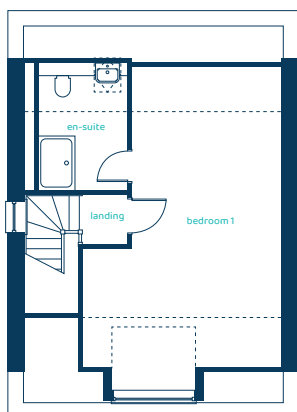


Room	Imperial	Metric
Living Room	10'8" x 15'2"	3.25m x 4.63m
Kitchen/Dining/Family	18'11" x 16'6"	5.76m x 5.03m
Laundry	3'1" x 3'5"	0.95m x 1.03m
Cloaks	3'1" x 6'2"	0.95m x 1.88m

First Floor Plan



Room	Imperial	Metric
Bedroom 2	10'11" x 10'10"	3.33m x 3.29m
En-Suite 2	8'0" x 3'11"	2.44m x 1.20m
Bedroom 3	12'0" x 9'0"	3.65m x 2.74m
Bedroom 4	9'7" x 8'6"	2.93m x 2.60m
Bathroom	7'8" x 6'2"	2.34m x 1.88m



Second Floor Plan

Room	Imperial	Metric
Bedroom 1	14'7" x 23'10"	4.43m x 7.27m
En-Suite 1	6'7" x 9'4"	2.00m x 2.85m

The Cheltenham

4 bed semi-detached / detached

Anwyl Homes is a registered developer with the NHQB. The images on this literature are computer-generated. Specific plots may be 'handed' (mirrored), detached/semi-detached, elevation treatment/roof materials may vary, and any garages may be single or double. Room sizes are approximate, dimensions are taken from the longest room point and are for guidance only. Kitchen and bathroom layouts are indicative. These plans are correct at the time of creation but may be subject to change during construction. Please speak to your Homes Adviser for more details. The Cheltenham 8/05/25.

