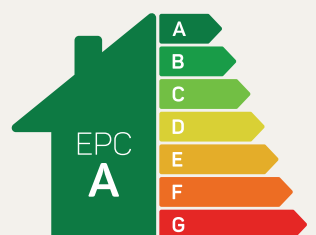




# The Appleton

## 3 bed detached

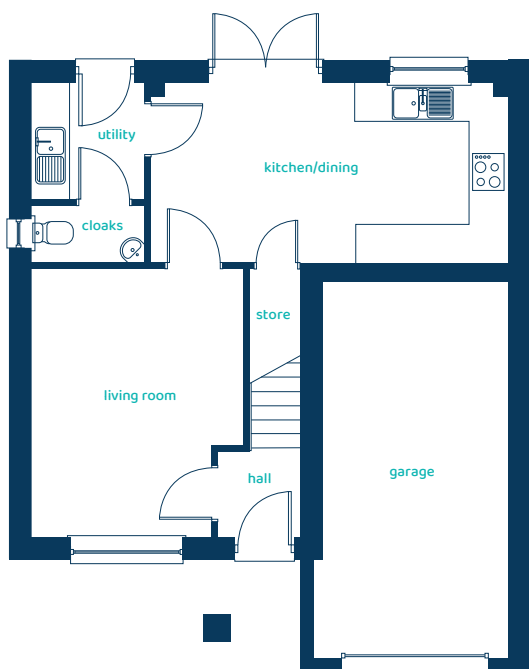
Three bedrooms and a host of modern features make a great home for growing families.



Predicted EPC rating

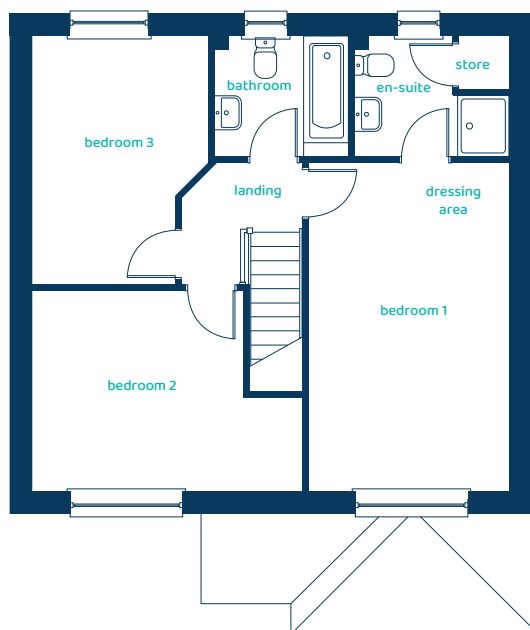
[anwylhomes.co.uk](http://anwylhomes.co.uk)

## Ground Floor Plan



Room	Imperial	Metric
Kitchen/Dining	18'11" x 9'5"	5.76m x 2.87m
Living Room	11'3" x 14'2"	3.42m x 4.31m
Utility	6'0" x 6'2"	1.82m x 1.88m
Cloaks	6'0" x 2'11"	1.82m x 0.90m

## First Floor Plan



Room	Imperial	Metric
Bedroom 1	10'6" x 17'5"	3.20m x 5.30m
En-Suite	8'1" x 6'4"	2.46m x 1.94m
Bedroom 2	14'4" x 10'7"	4.37m x 3.23m
Bedroom 3	9'4" x 13'2"	2.85m x 4.01m
Bathroom	7'1" x 6'4"	2.17m x 1.94m

# The Appleton

## 3 bed detached

Anwyl Homes is a registered developer with the NHQB. The images on this literature are computer-generated. Specific plots may be 'handed' (mirrored), detached/semi-detached, elevation treatment/roof materials may vary, and any garages may be single or double. Room sizes are approximate, dimensions are taken from the longest room point and are for guidance only. Kitchen and bathroom layouts are indicative. These plans are correct at the time of creation but may be subject to change during construction. Please speak to your Homes Adviser for more details. The Appleton 14/10/25.

