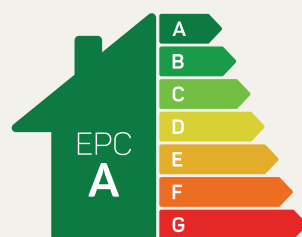




The Budworth

5 bed detached

A generously proportioned executive home with space to spare. A magnificent, detached home the whole family will appreciate.

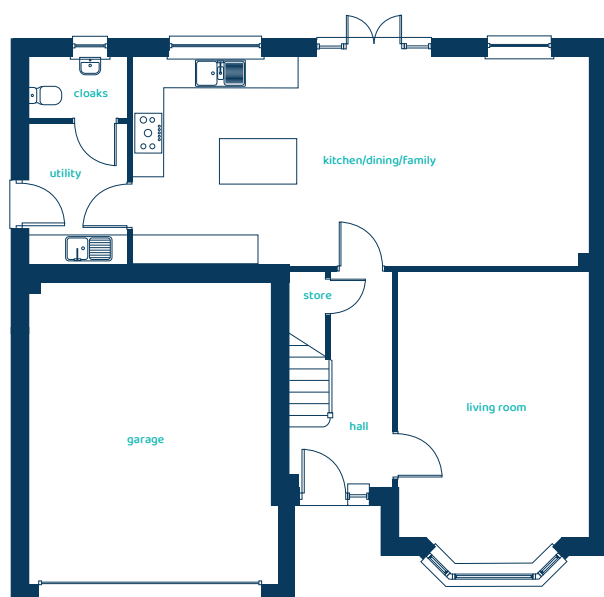


Predicted EPC rating



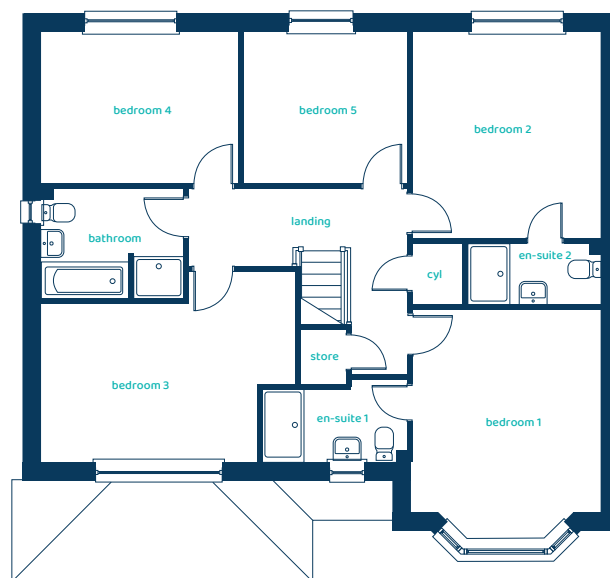
anwylhomes.co.uk

Ground Floor Plan



Room	Imperial	Metric
Kitchen/Dining/Family	29'6" x 13'5"	9.00m x 4.10m
Living Room	12'3" x 19'0"	3.74m x 5.78m
Utility	6'3" x 9'2"	1.90m x 2.80m
Cloaks	6'3" x 3'11"	1.20m x 1.90m

First Floor Plan



Room	Imperial	Metric
Bedroom 1	12'3" x 14'11"	3.74m x 4.55m
En-Suite 1	9'5" x 5'3"	2.86m x 1.60m
Bedroom 2	12'3" x 13'4"	3.74m x 4.06m
En-Suite 2	8'8" x 3'11"	1.20m x 2.64m
Bedroom 3	16'5" x 12'3"	5.00m x 3.74m
Bedroom 4	12'9" x 9'10"	3.88m x 2.99m
Bedroom 5	10'7" x 9'10"	3.22m x 2.99m
Bathroom	9'2" x 7'1"	2.80m x 2.15m

The Budworth

5 bed detached

Anwyl Homes is a registered developer with the NHQB. The images on this literature are computer-generated. Specific plots may be 'handed' (mirrored), detached/semi-detached, elevation treatment/roof materials may vary, and any garages may be single or double. Room sizes are approximate, dimensions are taken from the longest room point and are for guidance only. Kitchen and bathroom layouts are indicative. These plans are correct at the time of creation but may be subject to change during construction. Please speak to your Homes Adviser for more details. The Budworth 14/10/25.

