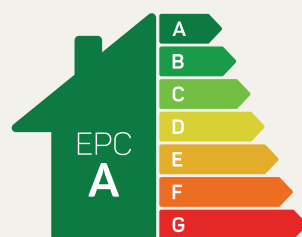




The Henley

4 bed detached

Four double bedrooms and an integral garage help make this a fabulous family home.

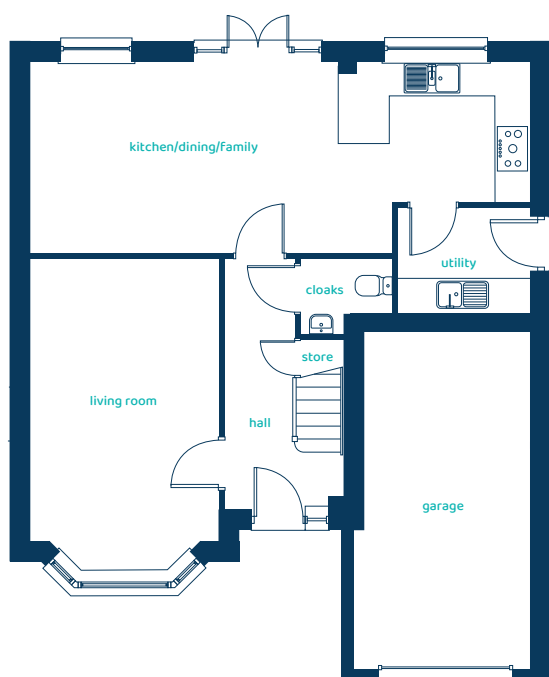


Predicted EPC rating

ANWYL

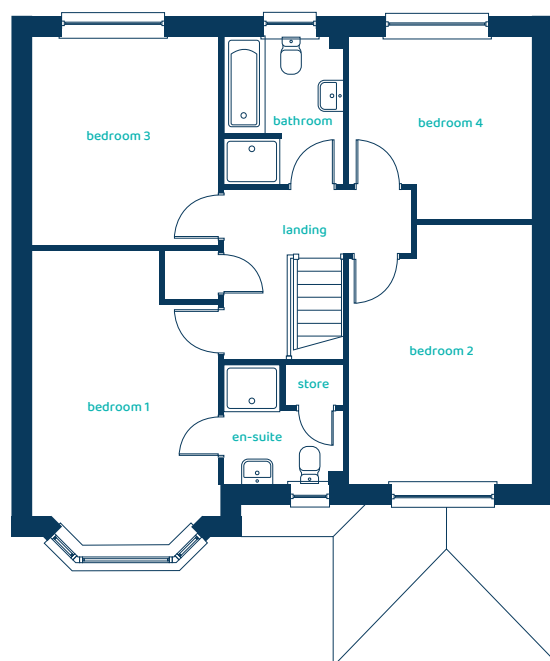
anwylhomes.co.uk

Ground Floor Plan



Room	Imperial	Metric
Kitchen/Family/ Dining	28'11" x 11'0"	8.80m x 3.36m
Living Room	10'9" x 18'1"	3.28m x 5.51m
Utility	7'6" x 6'1"	2.30m x 1.85m
Cloaks	5'3" x 4'3"	1.60m x 1.30m

First Floor Plan



Room	Imperial	Metric
Bedroom 1	10'9" x 17'2"	3.28m x 5.22m
En-Suite	6'11" x 6'11"	2.12m x 2.11m
Bedroom 2	10'6" x 15'0"	3.20m x 4.58m
Bedroom 3	10'9" x 12'1"	3.28m x 3.67m
Bedroom 4	10'5" x 10'7"	3.18m x 3.22m
Bathroom	6'11" x 8'6"	2.11m x 2.60m

The Henley

4 bed detached

Anwyl Homes is a registered developer with the NHQB. The images on this literature are computer-generated. Specific plots may be 'handed' (mirrored), detached/semi-detached, elevation treatment/roof materials may vary, and any garages may be single or double. Room sizes are approximate, dimensions are taken from the longest room point and are for guidance only. Kitchen and bathroom layouts are indicative. These plans are correct at the time of creation but may be subject to change during construction. Please speak to your Homes Adviser for more details. The Henley 14/10/25.

