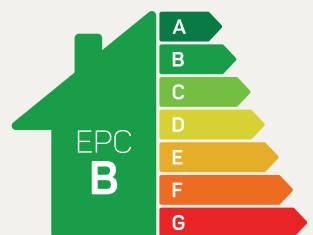




The Snowdon

3 bed semi-detached

First-time buyers and growing families will love the gloriously expansive open-plan living space that fills the Snowdon's ground floor.

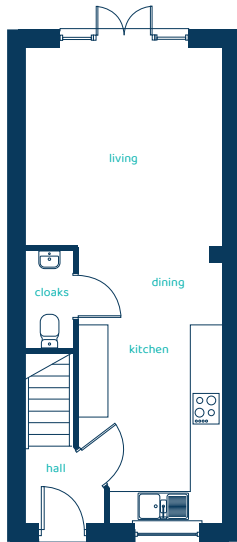


Predicted EPC rating



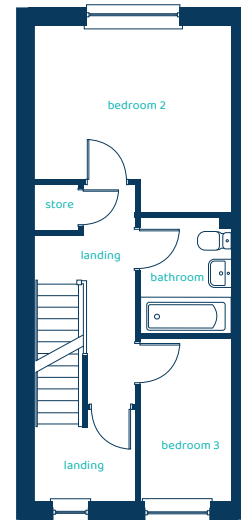
anwylhomes.co.uk

Ground Floor Plan

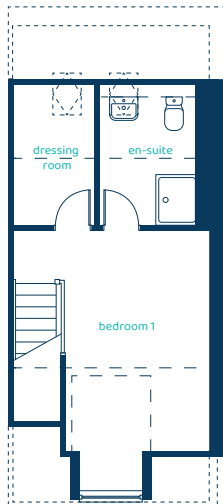


Room	Imperial	Metric
Kitchen/Dining	9'2" x 17'9"	2.79m x 5.39m
Living	12'6" x 12'8"	3.80m x 3.85m
Cloaks	3'0" x 6'3"	0.91m x 1.90m

First Floor Plan



Room	Imperial	Metric
Bedroom 2	12'6" x 11'11"	3.80m x 3.63m
Bedroom 3	5'10" x 10'5"	1.77m x 3.16m
Bathroom	5'10" x 7'5"	1.77m x 2.27m



Second Floor Plan

Room	Imperial	Metric
Bedroom 1	12'4" x 16'8"	3.76m x 5.08m
En-Suite	6'3" x 9'1"	1.90m x 2.77m
Dressing Room	5'2" x 9'1"	1.57m x 2.77m

The Snowdon

3 bed semi-detached

Anwyl Homes is a registered developer with the NHQB. The images on this literature are computer-generated. Specific plots may be 'handed' (mirrored), detached/semi-detached, elevation treatment/roof materials may vary, and any garages may be single or double. Room sizes are approximate, dimensions are taken from the longest room point and are for guidance only. Kitchen and bathroom layouts are indicative. These plans are correct at the time of creation but may be subject to change during construction. Please speak to your Homes Adviser for more details. The Snowdon 14/10/25.

