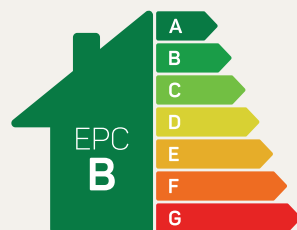




The Maxley

2 bed semi-detached

A traditionally-styled two-bedroom semi-detached home suited to first-time buyers and downsizers.

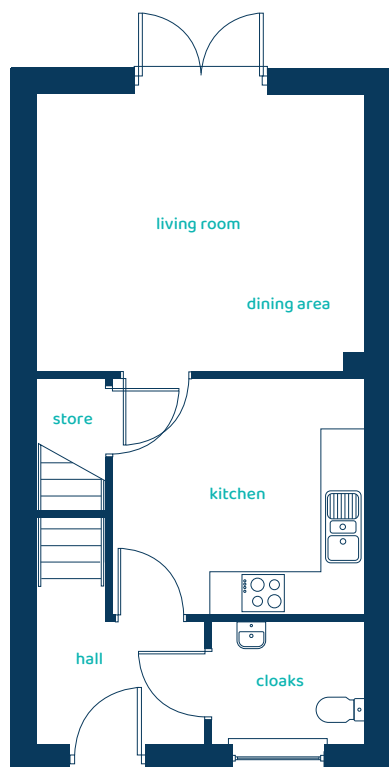


Predicted EPC rating



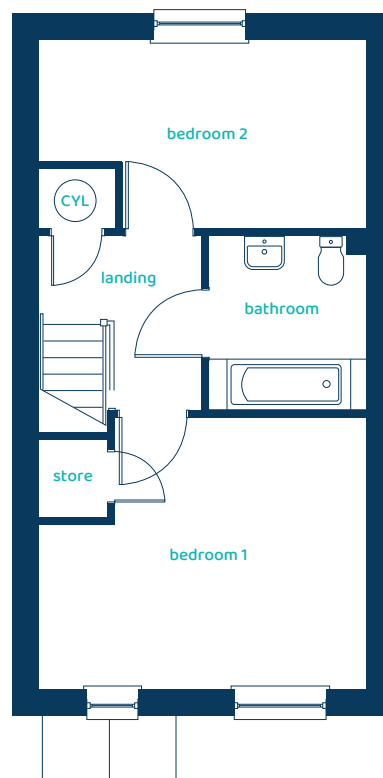
anwylhomes.co.uk

Ground Floor Plan



Room	Imperial	Metric
Kitchen	11'3" x 10'7"	3.43m x 3.23m
Living/Dining	14'7" x 12'5"	4.45m x 3.79m
Cloaks	6'9" x 5'5"	2.06m x 1.66m

First Floor Plan



Room	Imperial	Metric
Bedroom 1	14'7" x 12'2"	4.45m x 3.71m
Bedroom 2	14'7" x 8'6"	4.45m x 2.58m
Bathroom	6'11" x 7'10"	2.12m x 2.39m

The Maxley

2 bed semi-detached

Anwyl Homes is a registered developer with the NHQB. The images on this literature are computer-generated. Specific plots may be 'handed' (mirrored), detached/semi-detached, elevation treatment/roof materials may vary, and any garages may be single or double. Room sizes are approximate, dimensions are taken from the longest room point and are for guidance only. Kitchen and bathroom layouts are indicative. These plans are correct at the time of creation but may be subject to change during construction. Please speak to your Homes Adviser for more details. The Maxley 5/06/25.

