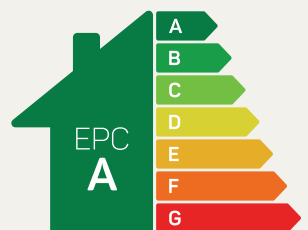




The Oakmere

4 bed detached

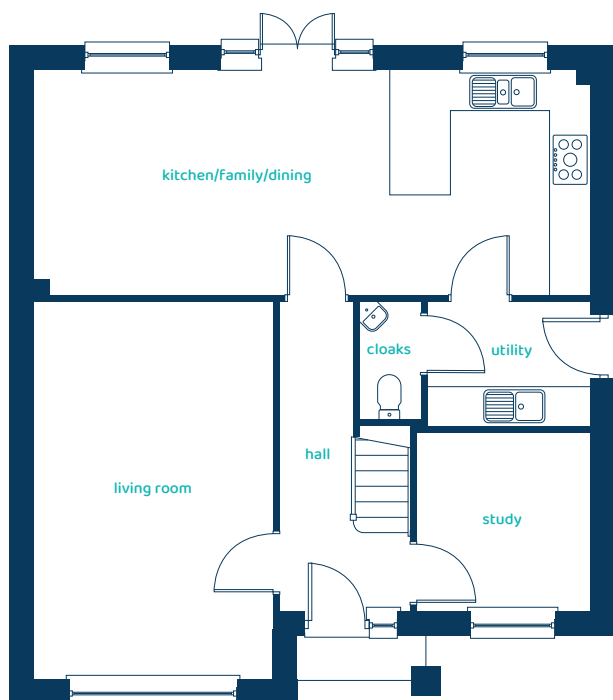
The Oakmere is a four-bedroom home with high ceilings, generous living areas, and a luxurious main suite making it perfect for busy family life.



Predicted EPC rating

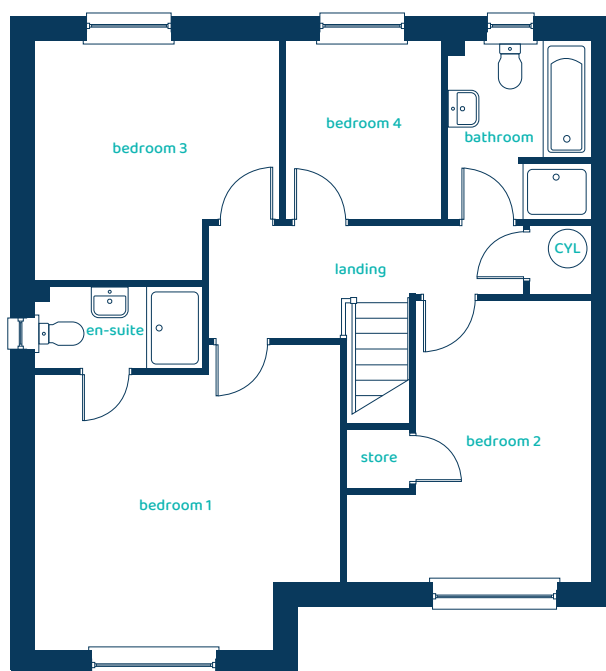
anwyhomes.co.uk

Ground Floor Plan



Room	Imperial	Metric
Kitchen/Family/Dining	27'0" x 10'10"	8.24m x 3.31m
Living Room	11'6" x 18'3"	3.51m x 5.56m
Study	8'6" x 8'7"	2.59m x 2.62m
Utility	7'11" x 6'0"	2.42m x 1.83m
Cloaks	2'11" x 5'8"	0.90m x 1.72m

First Floor Plan



Room	Imperial	Metric
Bedroom 1	14'10" x 13'4"	4.52m x 4.07m
En-suite	8'1" x 3'11"	2.47m x 1.20m
Bedroom 2	11'10" x 13'8"	3.62m x 4.16m
Bedroom 3	11'11" x 11'7"	3.62m x 3.54m
Bedroom 4	7'7" x 8'8"	2.31m x 2.63m
Bathroom	6'11" x 8'8"	2.11m x 2.63m

The Oakmere

4 bed detached

Anwyl Homes is a registered developer with the NHQB. The images on this literature are computer-generated. Specific plots may be 'handed' (mirrored), detached/semi-detached, elevation treatment/roof materials may vary, and any garages may be single or double. Room sizes are approximate, dimensions are taken from the longest room point and are for guidance only. Kitchen and bathroom layouts are indicative. These plans are correct at the time of creation but may be subject to change during construction. Please speak to your Homes Adviser for more details. The Oakmere 5/06/25.

