

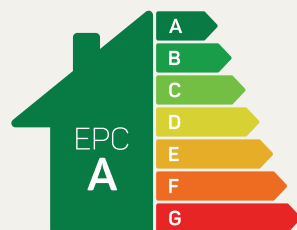


# The Rivington

4 bed detached

This spacious four-bedroom detached home combines traditional styling with the best in contemporary living.

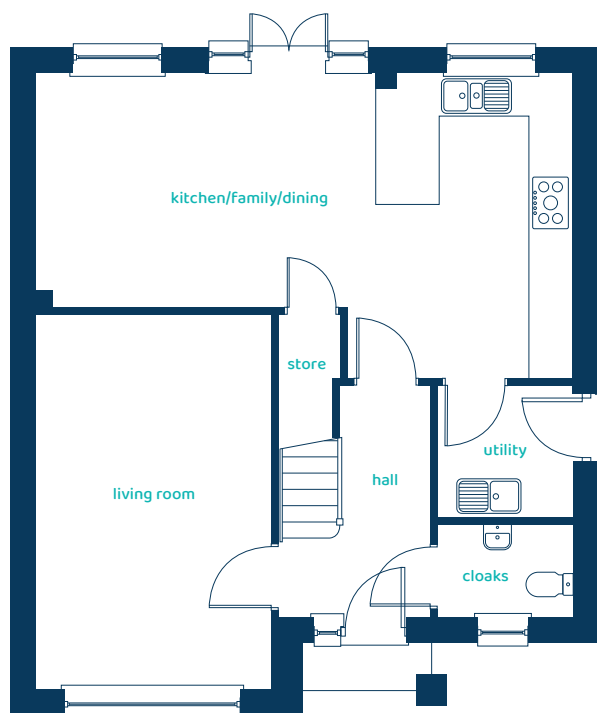
**ANWYL**



Predicted EPC rating

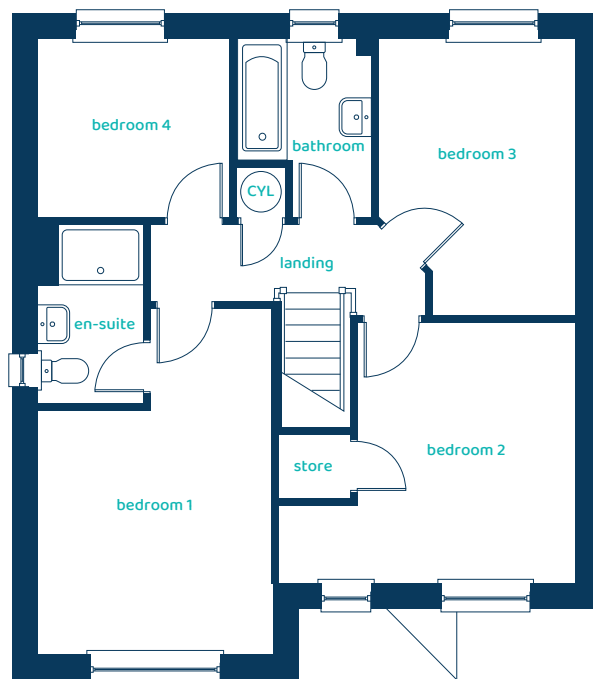
[anwyhomes.co.uk](http://anwyhomes.co.uk)

## Ground Floor Plan



Room	Imperial	Metric
Kitchen/Family/Dining	24'10" x 14'2"	7.56m x 4.31m
Living Room	10'9" x 17'3"	3.28m x 5.25m
Utility	6'3" x 6'2"	1.90m x 1.87m
Cloaks	6'3" x 4'3"	1.90m x 1.30m

## First Floor Plan



Room	Imperial	Metric
Bedroom 1	10'9" x 16'0"	3.28m x 4.88m
En-suite	4'10" x 8'4"	1.48m x 2.55m
Bedroom 2	13'9" x 12'1"	4.18m x 3.67m
Bedroom 3	9'1" x 12'10"	2.77m x 3.91m
Bedroom 4	8'11" x 8'3"	2.70m x 2.51m
Bathroom	6'3" x 8'3"	1.90m x 2.51m

# The Rivington

## 4 bed detached

Anwyl Homes is a registered developer with the NHQB. The images on this literature are computer-generated. Specific plots may be 'handed' (mirrored), detached/semi-detached, elevation treatment/roof materials may vary, and any garages may be single or double. Room sizes are approximate, dimensions are taken from the longest room point and are for guidance only. Kitchen and bathroom layouts are indicative. These plans are correct at the time of creation but may be subject to change during construction. Please speak to your Homes Adviser for more details. The Rivington 5/06/25.

