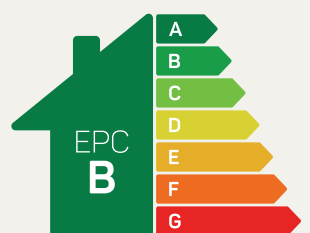




# The Styal

## 1 bed apartment

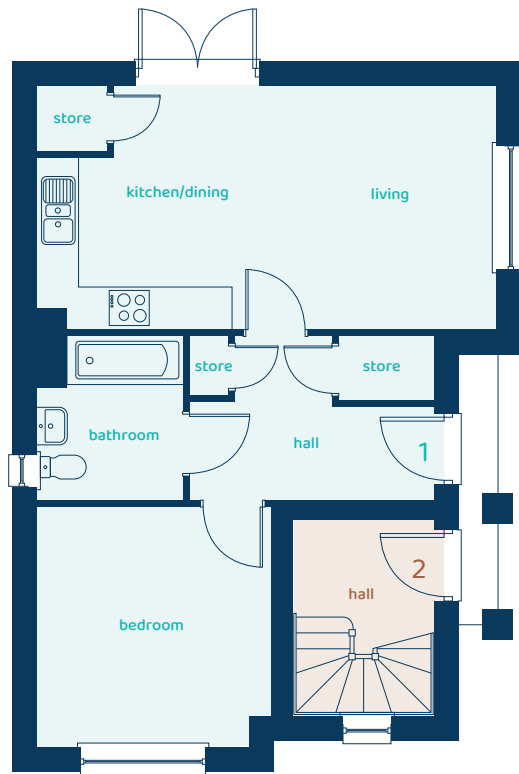
Perfect for first-time buyers and couples, boasting an open-plan living space with a modern kitchen-diner-living area, one spacious bedroom and family bathroom.



Predicted EPC rating

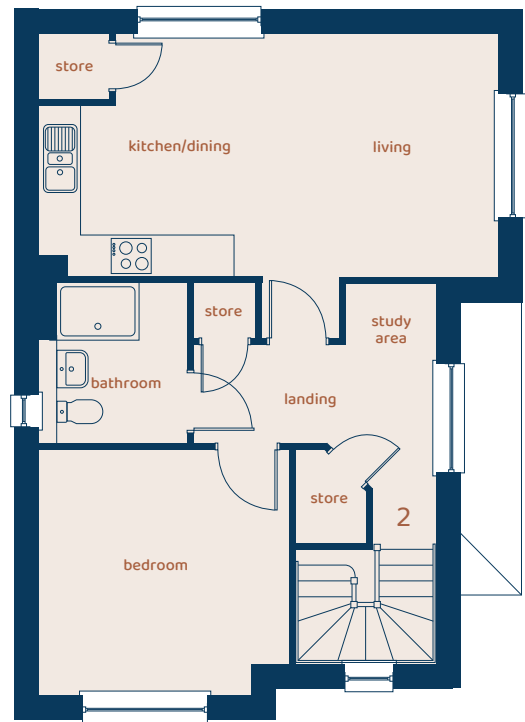
[anwylhomes.co.uk](http://anwylhomes.co.uk)

## Ground Floor Apartment



Room	Imperial	Metric
Kitchen/Family/ Dining	21'10" x 11'6"	6.66m x 3.51m
Bedroom	11'1" x 11'4"	3.38m x 3.46m
Bathroom	6'11" x 7'7"	2.11m x 2.32m

## First Floor Apartment



Room	Imperial	Metric
Kitchen/Family/ Dining	21'10" x 11'6"	6.66m x 3.51m
Bedroom	11'11" x 11'8"	3.64m x 3.56m
Bathroom	7'1" x 7'7"	2.15m x 2.30m

# The Styl

## 1 bed apartment

Anwyl Homes is a registered developer with the NHQB. The images on this literature are computer-generated. Specific plots may be 'handed' (mirrored), detached/semi-detached, elevation treatment/roof materials may vary, and any garages may be single or double. Room sizes are approximate, dimensions are taken from the longest room point and are for guidance only. Kitchen and bathroom layouts are indicative. These plans are correct at the time of creation but may be subject to change during construction. Please speak to your Homes Adviser for more details. The Styl 5/06/25.

