



The Bunbury

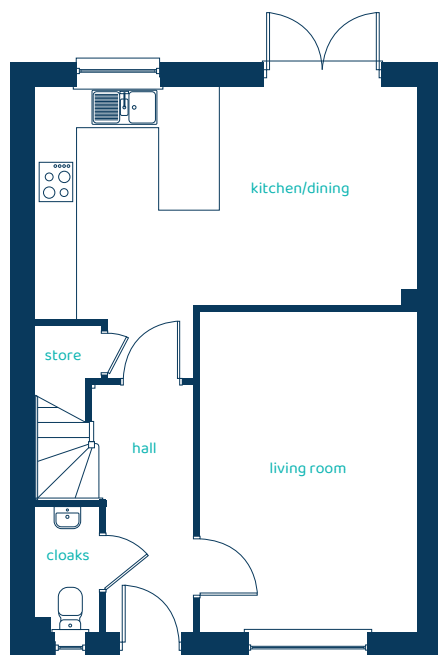
3 bed detached

Three bedrooms and a host of modern features make a great home for families and first-time buyers.



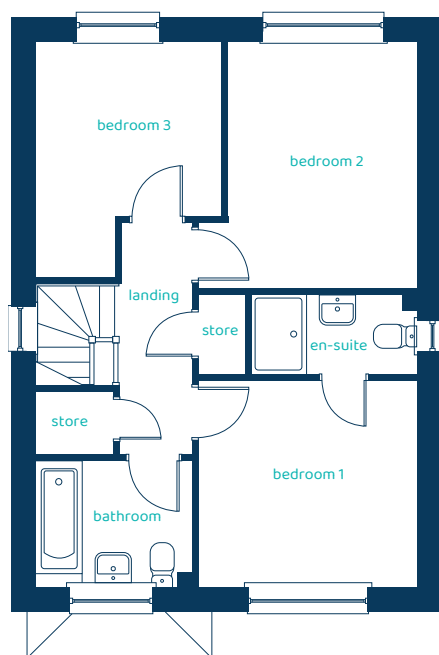
anwylhomes.co.uk

Ground Floor Plan



Room	Imperial	Metric
Kitchen/Dining	18'11" x 10'9"	5.76m x 3.27m
Living Room	10'8" x 15'10"	3.25m x 4.82m
Cloaks	3'2" x 6'3"	0.97m x 1.90m

First Floor Plan

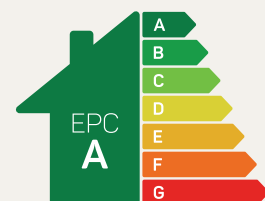


Room	Imperial	Metric
Bedroom 1	10'10" x 10'3"	3.31m x 3.12m
En-Suite	8'2" x 3'11"	2.50m x 1.20m
Bedroom 2	9'5" x 12'3"	2.86m x 3.73m
Bedroom 3	9'3" x 11'9"	2.81m x 3.57m
Bathroom	7'9" x 6'3"	2.36m x 1.90m

The Bunbury

3 bed detached

Anwyl Homes is a registered developer with the NHQB. The images on this literature are computer-generated. Specific plots may be 'handed' (mirrored), detached/semi-detached, elevation treatment/roof materials may vary, and any garages may be single or double. Room sizes are approximate, dimensions are taken from the longest room point and are for guidance only. Kitchen and bathroom layouts are indicative. These plans are correct at the time of creation but may be subject to change during construction. Please speak to your Homes Adviser for more details. The Bunbury 09/01/26.



Predicted EPC rating