



The Edgeworth

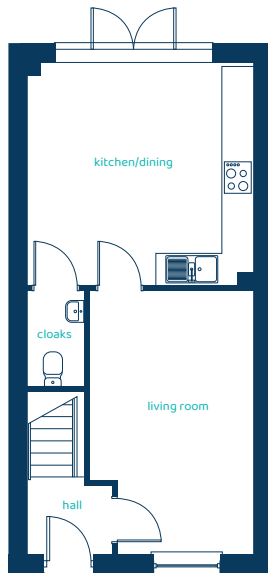
3 bed semi-detached, 2.5 storey

The Edgeworth is a stylish and spacious home with an extra floor, offering versatile living spaces and a contemporary design perfect for modern family life.



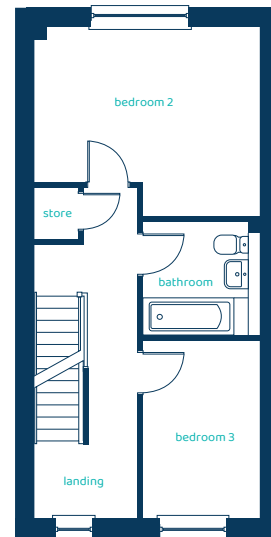
anwylhomes.co.uk

Ground Floor Plan

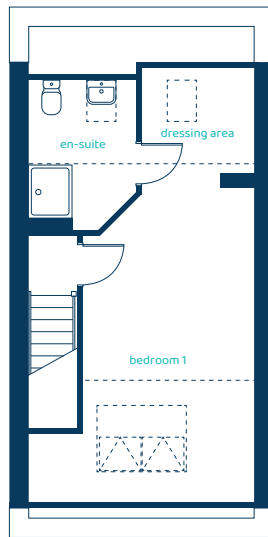


Room	Imperial	Metric
Kitchen/Dining	13'11" x 13'9"	4.25m x 4.18m
Living Room	10'2" x 16'3"	3.11m x 4.96m
Cloaks	3'5" x 5'11"	1.04m x 1.81m

First Floor Plan



Room	Imperial	Metric
Bedroom 2	13'11" x 11'8"	4.25m x 3.56m
Bedroom 3	7'3" x 11'0"	2.21m x 3.35m
Bathroom	7'3" x 7'1"	2.21m x 2.15m



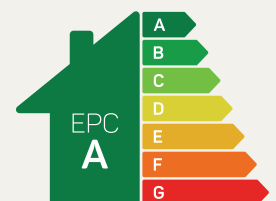
Second Floor Plan

Room	Imperial	Metric
Bedroom 1	10'6" x 19'7"	3.20m x 5.97m
En-Suite	6'8" x 9'4"	2.02m x 2.84m
Dressing Area	6'10" x 6'8"	2.09m x 2.02m

The Edgeworth

3 bed semi-detached, 2.5 storey

Anwyl Homes is a registered developer with the NHQB. The images on this literature are computer-generated. Specific plots may be 'handed' (mirrored), detached/semi-detached, elevation treatment/roof materials may vary, and any garages may be single or double. Room sizes are approximate, dimensions are taken from the longest room point and are for guidance only. Kitchen and bathroom layouts are indicative. These plans are correct at the time of creation but may be subject to change during construction. Please speak to your Homes Adviser for more details. The Edgeworth 09/01/26.



Predicted EPC rating