



# The Hollingworth

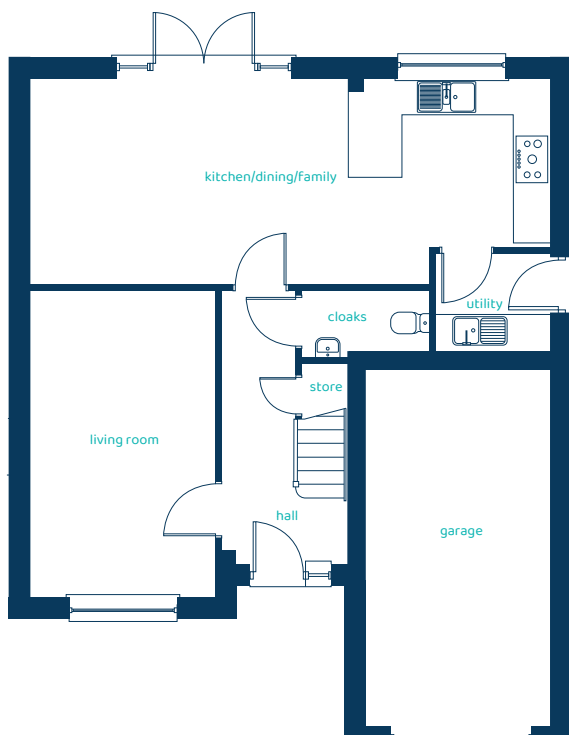
## 4 bed detached

Four double bedrooms and two living areas give the Hollingworth a supreme sense of space, creating a stylish and versatile family home designed for modern living.



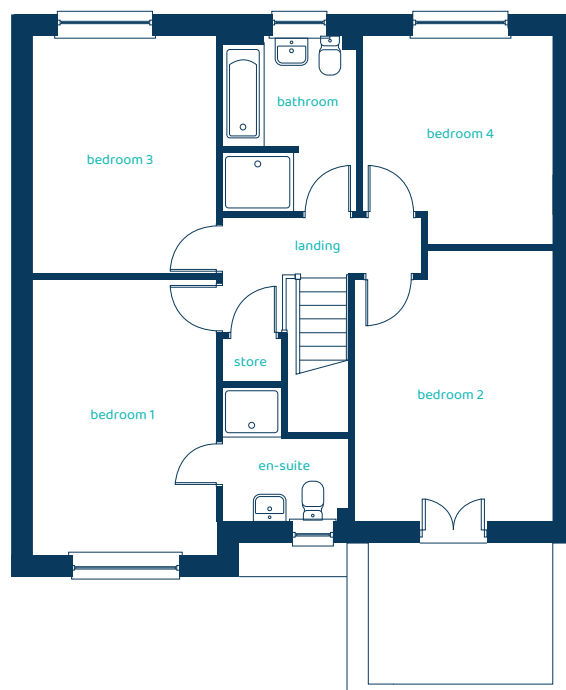
[anwylhomes.co.uk](https://anwylhomes.co.uk)

## Ground Floor Plan



Room	Imperial	Metric
Kitchen/ Dining/Family	28'6" x 11'3"	8.69m x 3.43m
Living Room	10'1" x 16'9"	3.06m x 5.11m
Utility	6'2" x 5'4"	1.89m x 1.63m
Cloaks	7'0" x 3'2"	2.12m x 0.97m

## First Floor Plan

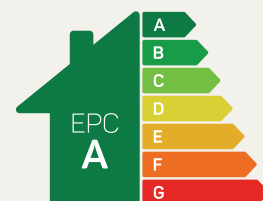


Room	Imperial	Metric
Bedroom 1	10'1" x 15'2"	3.06m x 4.62m
En-Suite	7'0" x 7'4"	2.12m x 2.24m
Bedroom 2	10'11" x 14'11"	3.32m x 4.55m
Bedroom 3	10'1" x 13'0"	3.06m x 3.97m
Bedroom 4	10'5" x 11'5"	3.17m x 3.48m
Bathroom	7'5" x 9'8"	2.26m x 2.93m

# The Hollingworth

## 4 bed detached

Anwyl Homes is a registered developer with the NHQB. The images on this literature are computer-generated. Specific plots may be 'handed' (mirrored), detached/semi-detached, elevation treatment/roof materials may vary, and any garages may be single or double. Room sizes are approximate, dimensions are taken from the longest room point and are for guidance only. Kitchen and bathroom layouts are indicative. These plans are correct at the time of creation but may be subject to change during construction. Please speak to your Homes Adviser for more details. The Hollingworth 09/01/26.



Predicted EPC rating