



# The Whitworth

5 bed detached, 2.5 storey

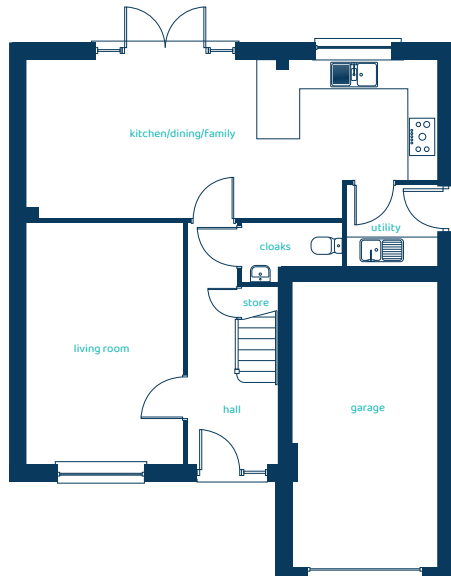
The five-bedroom Whitworth raises the bar, delivering quality without compromise over three floors. With five double bedrooms, including a top-floor suite, it's an impressive family home.

**ANWYL**



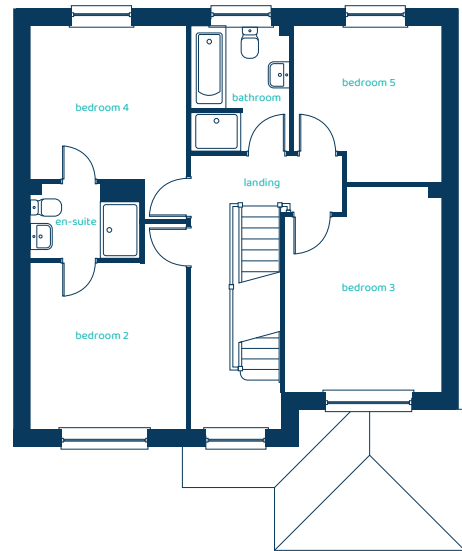
[anwylhomes.co.uk](https://anwylhomes.co.uk)

## Ground Floor Plan

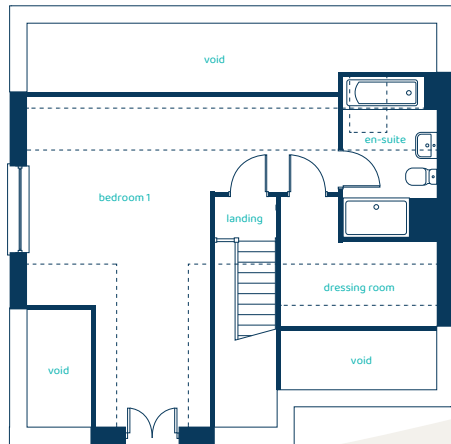


Room	Imperial	Metric
Kitchen/ Dining/Family	28'2" x 10'10"	8.57m x 3.30m
Living Room	10'7" x 16'5"	3.22m x 5.01m
Utility	6'2" x 5'7"	1.88m x 1.69m
Cloaks	6'11" x 2'10"	2.09m x 0.86m

## First Floor Plan



Room	Imperial	Metric
Bedroom 2	10'7" x 11'5"	3.22m x 3.48m
Bedroom 3	10'8" x 14'1"	3.25m x 4.29m
En-Suite	7'6" x 5'2"	2.27m x 1.57m
Bedroom 4	10'7" x 10'7"	3.22m x 3.22m
Bedroom 5	10'0" x 10'9"	3.06m x 3.29m
Bathroom	6'8" x 8'8"	2.04m x 2.63m



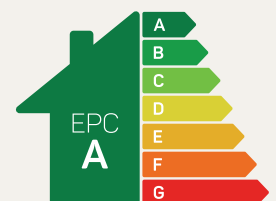
## Second Floor Plan

Room	Imperial	Metric
Bedroom 1	21'3" x 22'9"	6.48m x 6.93m
En-Suite	6'5" x 11'2"	1.96m x 3.39m
Dressing Room	10'8" x 9'0"	3.25m x 2.74m

# The Whitworth

## 5 bed detached, 2.5 storey

Anwyl Homes is a registered developer with the NHQB. The images on this literature are computer-generated. Specific plots may be 'handed' (mirrored), detached/semi-detached, elevation treatment/roof materials may vary, and any garages may be single or double. Room sizes are approximate, dimensions are taken from the longest room point and are for guidance only. Kitchen and bathroom layouts are indicative. These plans are correct at the time of creation but may be subject to change during construction. Please speak to your Homes Adviser for more details. The Whitworth 09/01/26.



Predicted EPC rating