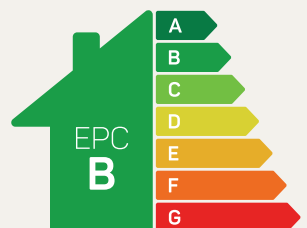




# The Snowdon

3 bed semi-detached / mid-mews

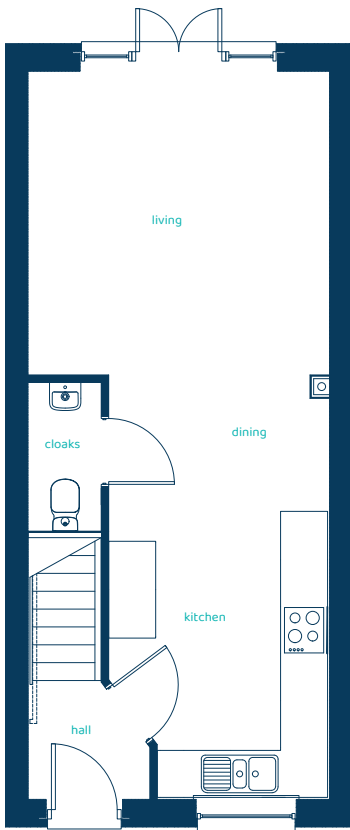
First-time buyers and growing families will love the gloriously expansive open-plan living space.



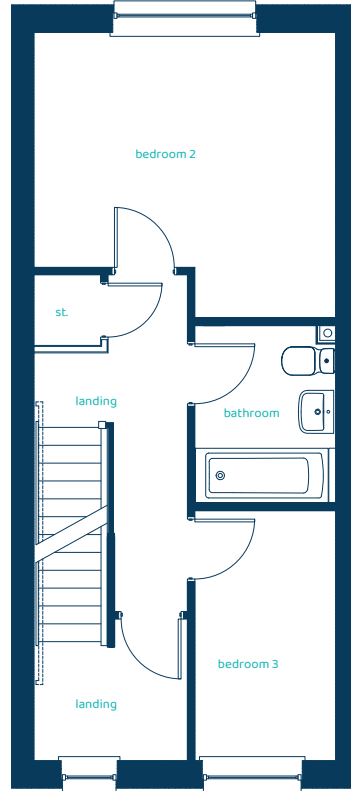
Predicted EPC rating

[anwylhomes.co.uk](http://anwylhomes.co.uk)

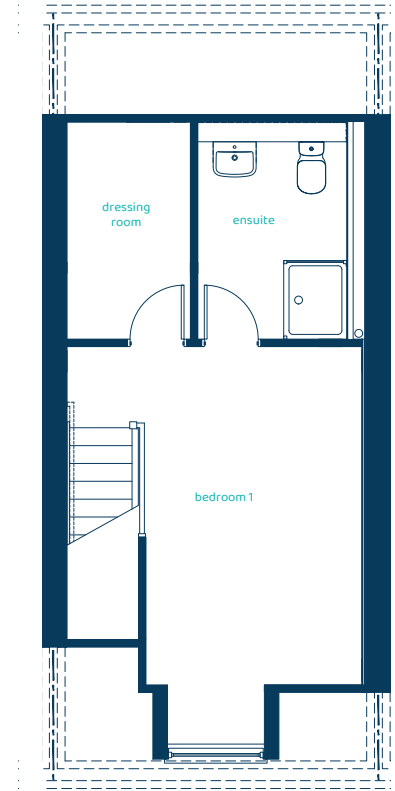
**Ground Floor Plan**



**First Floor Plan**



**Second Floor Plan**



Room	Imperial	Metric
Kitchen/ Dining	9'2" x 17'9"	2.79m x 5.39m
Living Room	12'6" x 12'8"	3.8m x 3.85m
Cloaks	3' x 6'3"	0.91m x 1.9m

Room	Imperial	Metric
Bedroom 2	11'11" x 12'6"	3.63m x 3.8m
Bedroom 3	5'10" x 10'5"	1.77m x 3.16m
Bathroom	5'10" x 7'5"	1.77m x 2.27m

Room	Imperial	Metric
Bedroom 1	12'4" x 14'2"	3.76m x 4.32m
Ensuite	6'3" x 9'1"	1.9m x 2.77m
Dressing Room	5'2" x 9'1"	1.57m x 2.77m

# The Snowdon

## 3 bed semi-detached / mid-mews

Anwyl Homes is a registered developer with the NHQB. The images on this literature are computer-generated. Specific plots may be 'handed' (mirrored), detached/semi-detached, elevation treatment/roof materials may vary, and any garages may be single or double. Room sizes are approximate, dimensions are taken from the longest room point and are for guidance only. Kitchen and bathroom layouts are indicative. These plans are correct at the time of creation but may be subject to change during construction. Please speak to your Homes Adviser for more details. The Snowdon 30/03/26.

