



# Weaver Forge

---

**ANWYL**

01270 306 647  
[anwyl.co.uk/weaver](http://anwyl.co.uk/weaver)

# When it comes to *new homes* we think of everything.

There's so much to consider when you're looking for a new home. From the size to the location, the build quality to the price, making the right choice really matters.



## At Anwyl Homes, we know what it's like.

We should do. After all we've been building high quality new homes for decades, guiding our customers through the process and helping to unlock happy times ahead.

Whether you're looking for a cosy first property, a spacious family base or you want to downsize now the kids have moved on, there's an Anwyl home that's right for you.

By combining traditional styling and quality workmanship with the best of today's modern features - not to mention personal touches and friendly smiles every step of the way - your Anwyl experience begins the moment you get in touch. Because with every new home we build, you can be sure we're thinking of you.



# Welcome to the *neighbourhood.*

Welcome to Weaver Forge, an exciting new collection of two, three, and four-bedroom new build homes in Nantwich.

Set on the southern edge of Nantwich, this inviting new community of beautifully designed 2, 3 and 4 bedroom homes blends the charm of a historic market town with excellent modern connections; just minutes from the town centre and surrounded by rolling Cheshire countryside, it offers relaxed, well-connected living with easy access to Crewe station for travel to Manchester, Liverpool and Birmingham, while local schools, shops and green spaces make it ideal for putting down roots, and whether you're strolling along the River Weaver, exploring independent cafés or heading into open countryside, you're perfectly placed to enjoy everything that makes Nantwich special.



# Weaver Forge, Nantwich

**Key:**



Ainsdale



Burton



Cartmel



Charlton



Dodleston



Hampton



Marford



Snowdon



Stapeley



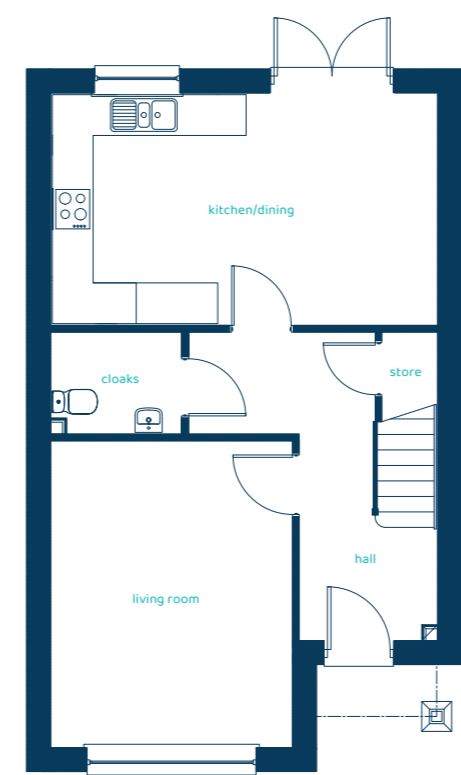
Affordable



This plan is a general site layout, not to scale and is intended for guidance only. It does not form any part of the contract. The plan does not show ownership boundaries, easements or wayleaves. Anwyll Homes reserves the right to alter or replan at any time. 16/04/26.

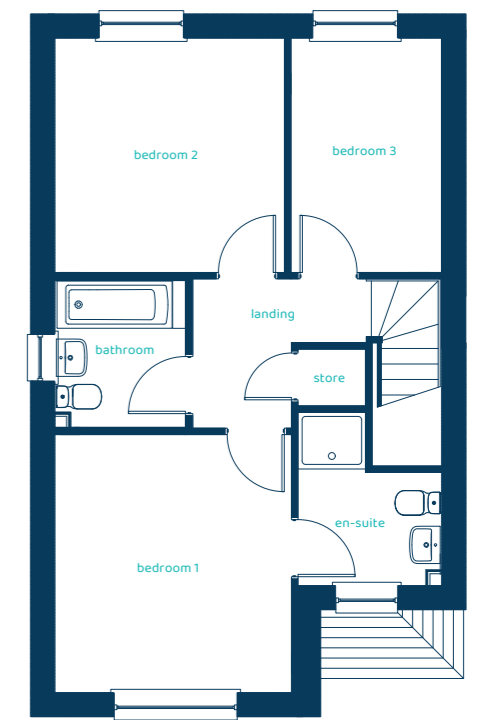


**Ground Floor Plan**



Room	Imperial	Metric
Kitchen / Dining	18'6" x 11'1"	5.65m x 3.37m
Living Room	11'6" x 14'8"	3.51m x 4.47m
Cloaks	6'3" x 4'9"	1.91m x 1.45m

**First Floor Plan**



Room	Imperial	Metric
Bedroom 1	11'4" x 12'5"	3.46m x 3.77m
En-suite	6'10" x 8'3"	2.09m x 2.53m
Bedroom 2	11' x 11'3"	3.36m x 3.42m
Bedroom 3	7'x2" x 11'3"	2.19m x 3.42m
Bathroom	6'3" x 7'1"	1.91m x 2.16m

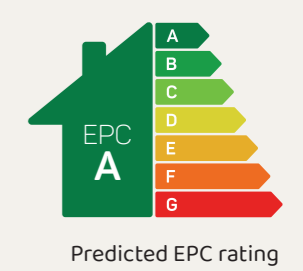
# The Ainsdale

3 bed detached / semi-detached

A neat three-bedroom semi-detached home with family bathroom, en-suite and downstairs cloakroom.

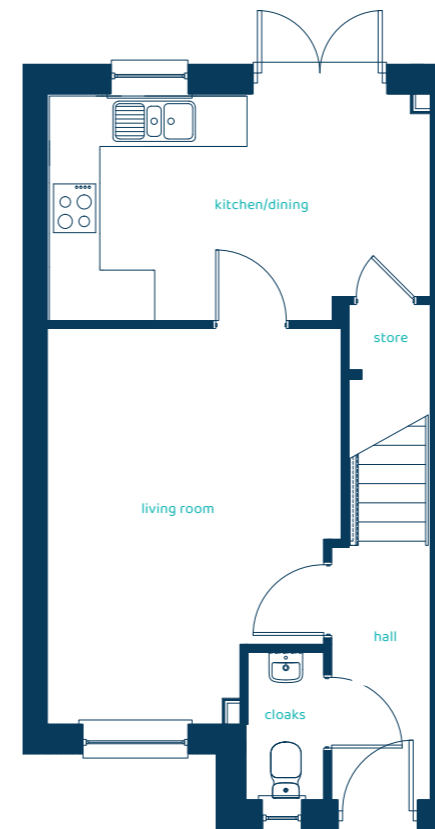


Anwyl Homes is a registered developer with the NHQB. The images on this literature are computer-generated. Specific plots may be 'handed' (mirrored), detached/semi-detached, elevation treatment/roof materials may vary, and any garages may be single or double. Room sizes are approximate, dimensions are taken from the longest room point and are for guidance only. Kitchen and bathroom layouts are indicative. These plans are correct at the time of creation but may be subject to change during construction. Please speak to your Homes Adviser for more details. The Ainsdale 30/03/26.



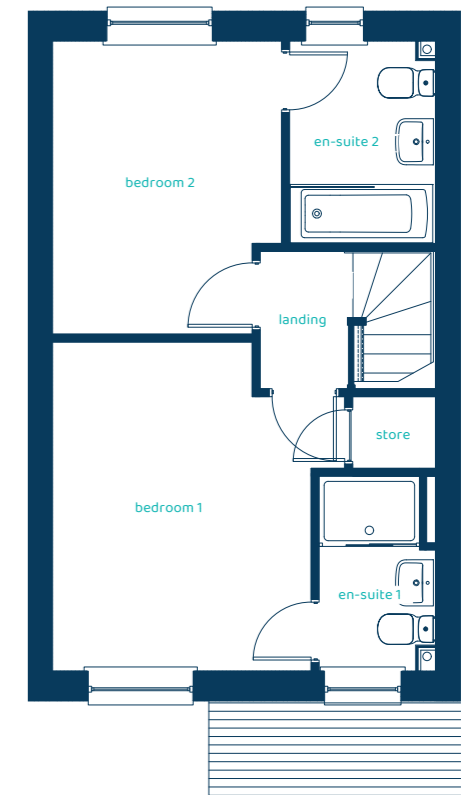


**Ground Floor Plan**



Room	Imperial	Metric
Kitchen / Dining	14'9" x 8'9"	4.51m x 2.67m
Living Room	11'5" x 15'4"	3.47m x 4.68m
Cloaks	2'11" x 5'8"	0.9m x 1.73m

**First Floor Plan**



Room	Imperial	Metric
Bedroom 1	10' x 12'9"	3.05m x 3.89m
En-suite 1	4'6" x 7'6"	1.36m x 2.29m
Bedroom 2	8'x10" x 11'4"	2.7m x 3.46m
En-suite 2	5'7" x 7'10"	1.71m x 2.38m

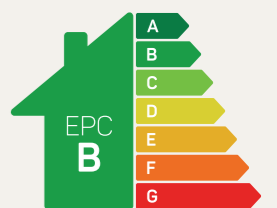
# The Burton

## 2 bed semi-detached

The Burton is a stylish two-bedroom home with en-suite bedrooms and spacious open-plan living making it ideal for first-time buyers and growing families.



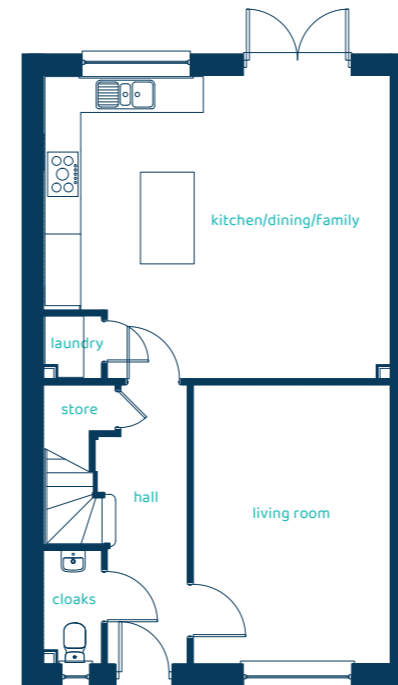
Anwyl Homes is a registered developer with the NHQB. The images on this literature are computer-generated. Specific plots may be 'handed' (mirrored), detached/semi-detached, elevation treatment/roof materials may vary, and any garages may be single or double. Room sizes are approximate, dimensions are taken from the longest room point and are for guidance only. Kitchen and bathroom layouts are indicative. These plans are correct at the time of creation but may be subject to change during construction. Please speak to your Homes Adviser for more details. The Burton 30/03/26.



Predicted EPC rating

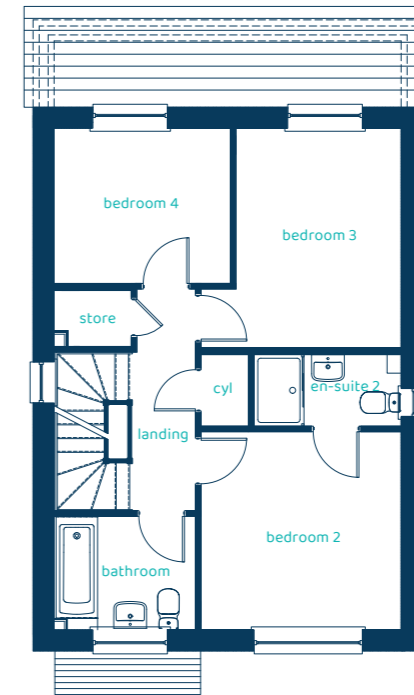


**Ground Floor Plan**



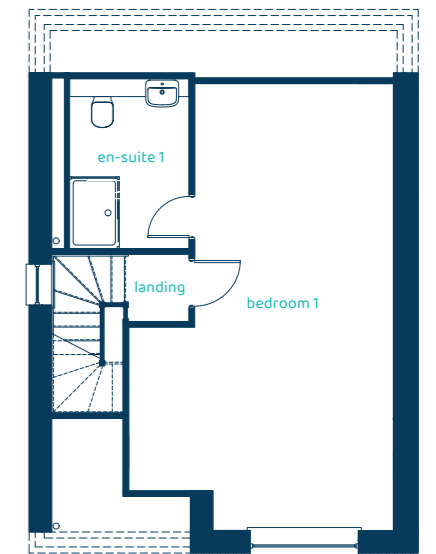
Room	Imperial	Metric
Kitchen / Dining	18'11" x 16'6"	5.76m x 5.03m
Living Room	10'8" x 15'2"	3.25m x 4.63m
Cloaks	3'1" x 6'2"	0.95m x 1.88m
Laundry	3'1" x 3'5"	0.95m x 1.03m

**First Floor Plan**



Room	Imperial	Metric
Bedroom 2	10'11" x 10'10"	3.33m x 3.29m
En-suite 2	8' x 3'11"	2.44m x 1.2m
Bedroom 3	10'11" x 12'1"	3.33m x 3.67m
Bedroom 4	9'7" x 8'6"	2.93m x 2.6m
Bathroom	7'8" x 6'2"	2.34m x 1.88m

**Second Floor Plan**



Room	Imperial	Metric
Bedroom 1	14'7" x 24'5"	4.43m x 7.44m
En-suite 1	6'7" x 9'4"	2m x 2.85m

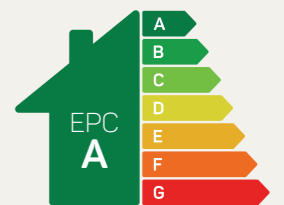
# The Cartmel

## 4 bed detached

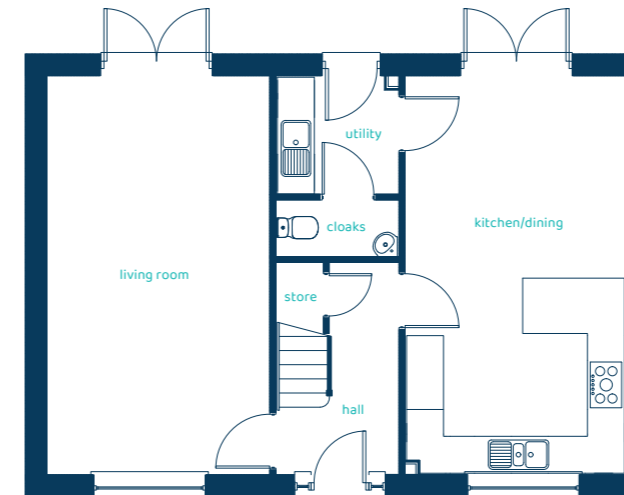
A stylish four bedroom home featuring traditional features and modern, open-plan living spaces.



Anwyl Homes is a registered developer with the NHQB. The images on this literature are computer-generated. Specific plots may be 'handed' (mirrored), detached/semi-detached, elevation treatment/roof materials may vary, and any garages may be single or double. Room sizes are approximate, dimensions are taken from the longest room point and are for guidance only. Kitchen and bathroom layouts are indicative. These plans are correct at the time of creation but may be subject to change during construction. Please speak to your Homes Adviser for more details. The Cartmel 30/03/26.

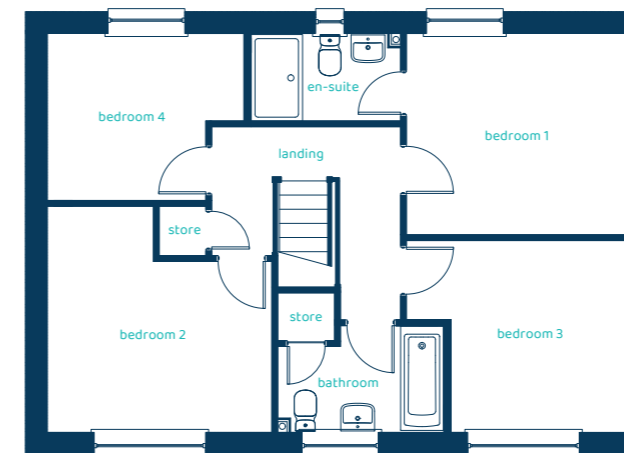


Predicted EPC rating



### Ground Floor Plan

Room	Imperial	Metric
Kitchen / Dining	11'7" x 21'1"	3.54m x 6.43m
Living Room	11'9" x 21'1"	3.57m x 6.43m
Utility	6'5" x 6'3"	1.95m x 1.9m
Cloaks	6'5" x 3'	1.95m x 0.92m



### First Floor Plan

Room	Imperial	Metric
Bedroom 1	11'8" x 10'8"	3.55m x 3.25m
En-suite	8' x 4'7"	2.43m x 1.4m
Bedroom 2	11'11" x 12'	3.63m x 3.65m
Bedroom 3	11'8" x 10'2"	3.55m x 3.09m
Bedroom 4	10'5" x 8'10"	3.17m x 2.69m
Bathroom	8'10" x 5'7"	2.7m x 1.7m

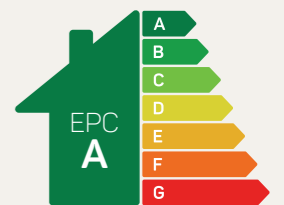
# The Charlton

## 4 bed detached

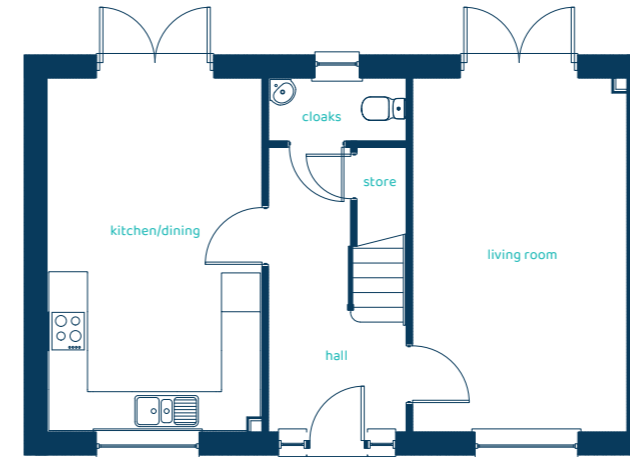
A traditionally-styled, detached four-bedroom home that offers plenty of space for busy family living.



Anwyl Homes is a registered developer with the NHQB. The images on this literature are computer-generated. Specific plots may be 'handed' (mirrored), detached/semi-detached, elevation treatment/roof materials may vary, and any garages may be single or double. Room sizes are approximate, dimensions are taken from the longest room point and are for guidance only. Kitchen and bathroom layouts are indicative. These plans are correct at the time of creation but may be subject to change during construction. Please speak to your Homes Adviser for more details. The Charlton-B 30/03/26.

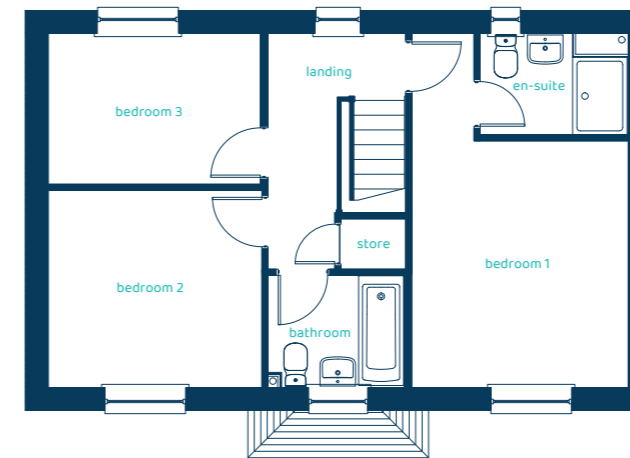


Predicted EPC rating



### Ground Floor Plan

Room	Imperial	Metric
Kitchen / Dining	10'9" x 17'10"	3.27m x 5.42m
Living Room	10'9" x 17'10"	3.26m x 5.42m
Cloaks	6'10" x 3'1"	2.08m x 0.95m



### First Floor Plan

Room	Imperial	Metric
Bedroom 1	10'11" x 12'5"	3.32m x 3.79m
En-suite	7'5" x 5'1"	2.26m x 1.54m
Bedroom 2	10'9" x 9'11"	3.28m x 3.02m
Bedroom 3	10'8" x 7'7"	3.25m x 2.31m
Bathroom	6'11" x 5'7"	2.1m x 1.71m

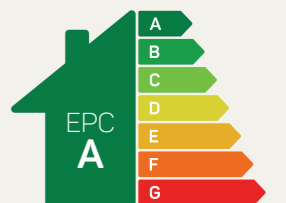
# The Dodleston

## 3 bed detached

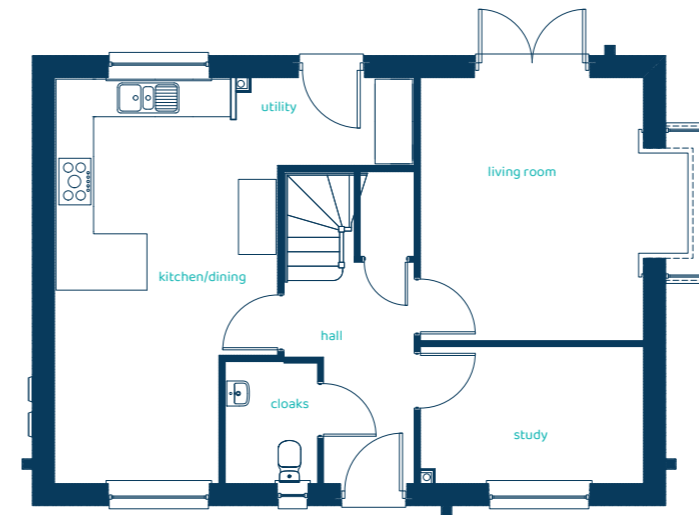
An elegant contemporary home with three beautiful bedrooms, two bathrooms and the added convenience of a downstairs cloaks.



Anwyl Homes is a registered developer with the NHQB. The images on this literature are computer-generated. Specific plots may be 'handed' (mirrored), detached/semi-detached, elevation treatment/roof materials may vary, and any garages may be single or double. Room sizes are approximate, dimensions are taken from the longest room point and are for guidance only. Kitchen and bathroom layouts are indicative. These plans are correct at the time of creation but may be subject to change during construction. Please speak to your Homes Adviser for more details. The Dodleston 30/03/26.

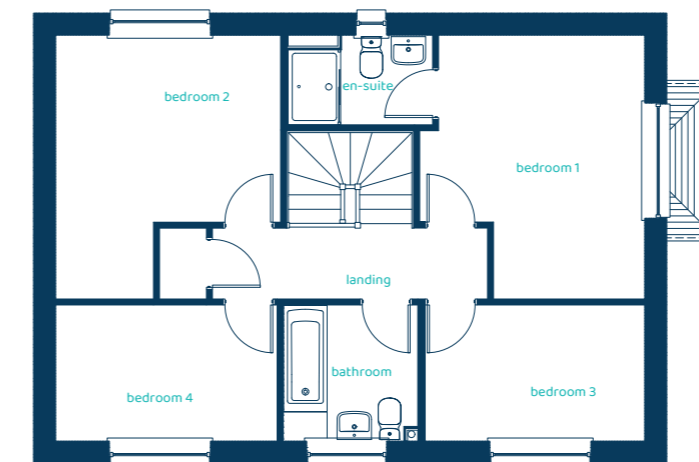


Predicted EPC rating



### Ground Floor Plan

Room	Imperial	Metric
Kitchen/Dining	11'6" x 21'1"	3.51m x 6.43m
Living Room	14'1" x 13'9"	4.3m x 4.18m
Study	11'6" x 7'1"	3.51m x 2.16m
Utility	7'2" x 4'5"	2.18m x 1.35m
Cloaks	4'9" x 6'3"	1.45m x 1.9m



### First Floor Plan

Room	Imperial	Metric
Bedroom 1	11'9" x 13'9"	3.57m x 4.19m
En-suite	7'8" x 4'8"	2.35m x 1.43m
Bedroom 2	11'9" x 13'9"	3.57m x 4.19m
Bedroom 3	11'6" x 7'1"	3.5m x 2.15m
Bedroom 4	11'6" x 7'1"	3.52m x 2.15m
Bathroom	7'1" x 7'1"	2.15m x 2.15m

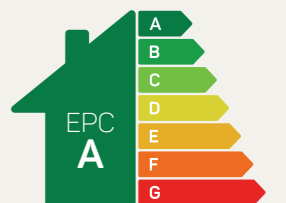
# The Hampton

## 4 bed detached

Traditional styling and four generously-sized bedrooms define this elegant and impressive family home.



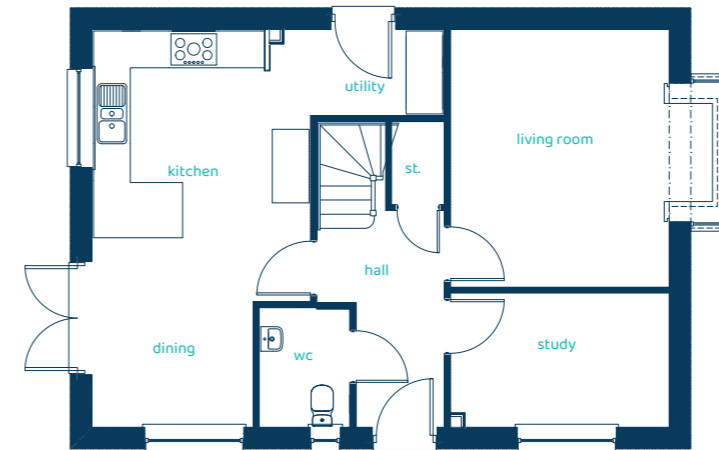
Anwyl Homes is a registered developer with the NHQB. The images on this literature are computer-generated. Specific plots may be 'handed' (mirrored), detached/semi-detached, elevation treatment/roof materials may vary, and any garages may be single or double. Room sizes are approximate, dimensions are taken from the longest room point and are for guidance only. Kitchen and bathroom layouts are indicative. These plans are correct at the time of creation but may be subject to change during construction. Please speak to your Homes Adviser for more details. The Hampton 30/03/26.



Predicted EPC rating

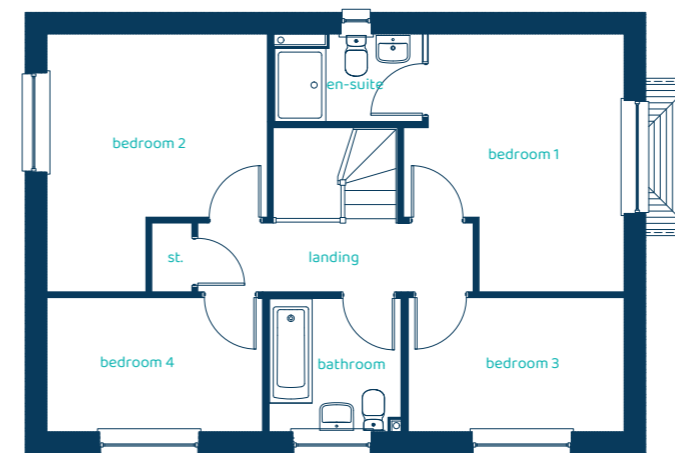


### Ground Floor Plan



Room	Imperial	Metric
Kitchen/Dining	11'6" x 21'1"	3.51m x 6.43m
Living Room	14'1" x 13'9"	4.3m x 4.18m
Study	11'7" x 7'1"	3.54m x 2.16m
Utility	9'3" x 4'5"	2.82m x 1.35m
Cloaks	4'9" x 6'3"	1.45m x 1.9m

### First Floor Plan



Room	Imperial	Metric
Bedroom 1	11'9" x 13'9"	3.57m x 4.18m
En-suite	7'11" x 4'7"	2.41m x 1.41m
Bedroom 2	11'9" x 13'9"	3.57m x 4.18m
Bedroom 3	11'6" x 7'1"	3.49m x 2.16m
Bedroom 4	11'6" x 7'1"	3.49m x 2.16m
Bathroom	7'1" x 7'1"	2.15m x 2.15m

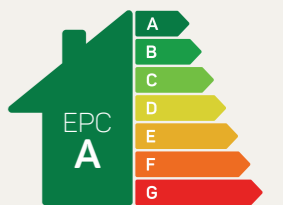
# The Marford

## 4 bed detached

This impressive four-bedroom detached home is the ideal setting for family living.



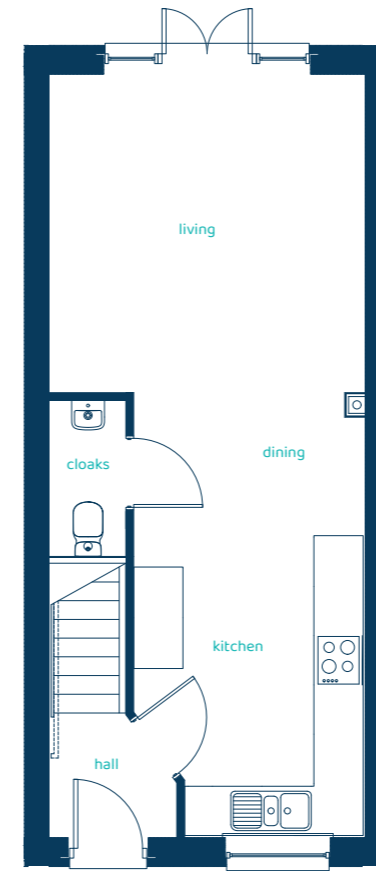
Anwyl Homes is a registered developer with the NHQB. The images on this literature are computer-generated. Specific plots may be 'handed' (mirrored), detached/semi-detached, elevation treatment/roof materials may vary, and any garages may be single or double. Room sizes are approximate, dimensions are taken from the longest room point and are for guidance only. Kitchen and bathroom layouts are indicative. These plans are correct at the time of creation but may be subject to change during construction. Please speak to your Homes Adviser for more details. The Marford 30/03/26.



Predicted EPC rating

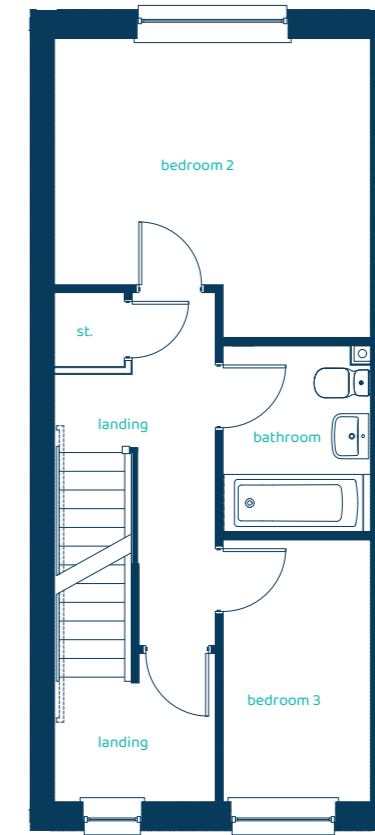


Ground Floor Plan



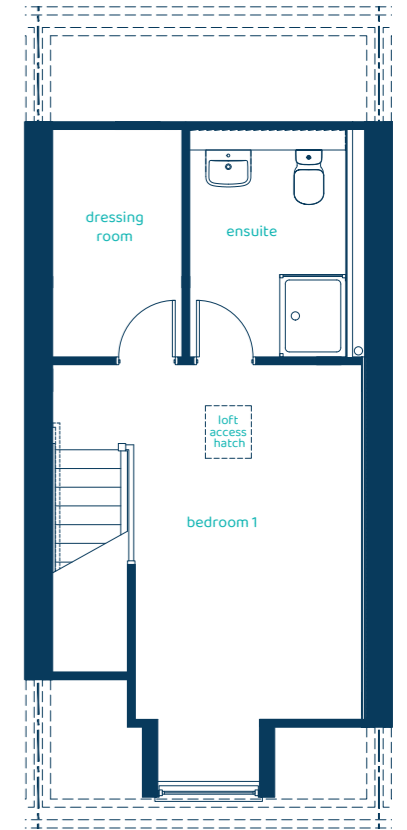
Room	Imperial	Metric
Kitchen/ Dining	9'2" x 17'9"	2.79m x 5.39m
Living Room	12'6" x 12'8"	3.8m x 3.85m
Cloaks	3' x 6'3"	0.91m x 1.9m

First Floor Plan



Room	Imperial	Metric
Bedroom 2	11'11" x 12'6"	3.63m x 3.8m
Bedroom 3	5'10" x 10'5"	1.77m x 3.16m
Bathroom	5'10" x 7'5"	1.77m x 2.27m

Second Floor Plan



Room	Imperial	Metric
Bedroom 1	12'4" x 14'2"	3.76m x 4.32m
Ensuite	6'3" x 9'1"	1.9m x 2.77m
Dressing Room	5'2" x 9'1"	1.57m x 2.77m

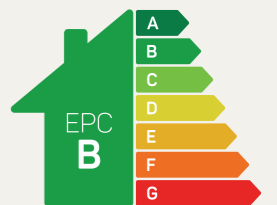
# The Snowdon

3 bed semi-detached / mid-mews

First-time buyers and growing families will love the gloriously expansive open-plan living space.



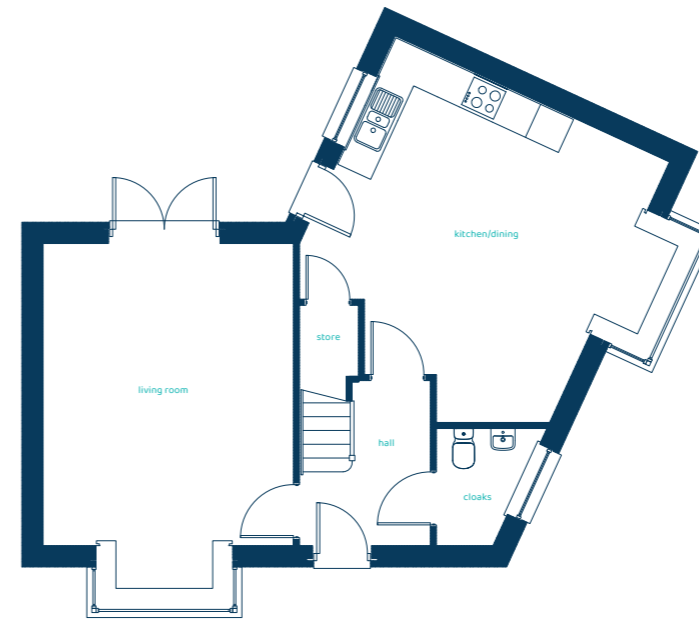
Anwyl Homes is a registered developer with the NHQB. The images on this literature are computer-generated. Specific plots may be 'handed' (mirrored), detached/semi-detached, elevation treatment/roof materials may vary, and any garages may be single or double. Room sizes are approximate, dimensions are taken from the longest room point and are for guidance only. Kitchen and bathroom layouts are indicative. These plans are correct at the time of creation but may be subject to change during construction. Please speak to your Homes Adviser for more details. The Snowdon 30/03/26.



Predicted EPC rating



**Ground Floor Plan**



Room	Imperial	Metric
Kitchen/Dining	16'3" x 18'	4.94m x 5.49m
Living Room	13'5" x 16'3"	4.09m x 4.94m
Cloaks	5'10" x 6'3"	1.77m x 1.91m

**First Floor Plan**



Room	Imperial	Metric
Bedroom 1	13'7" x 16'3"	4.15m x 4.94m
En-suite	8'3" x 3'11"	2.52m x 1.2m
Bedroom 2	6'10" x 12'3"	2.08m x 3.73m
Bedroom 3	10'4" x 12'9"	3.14m x 3.89m
Bathroom	5'7" x 10'4"	1.71m x 3.16m

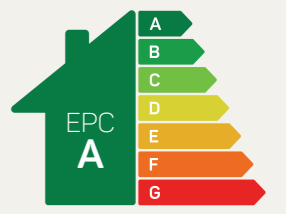
# The Stapeley

## 3 bed detached

A beautiful three-bedroom detached home with distinctive styling designed for free-flowing, fun family life.

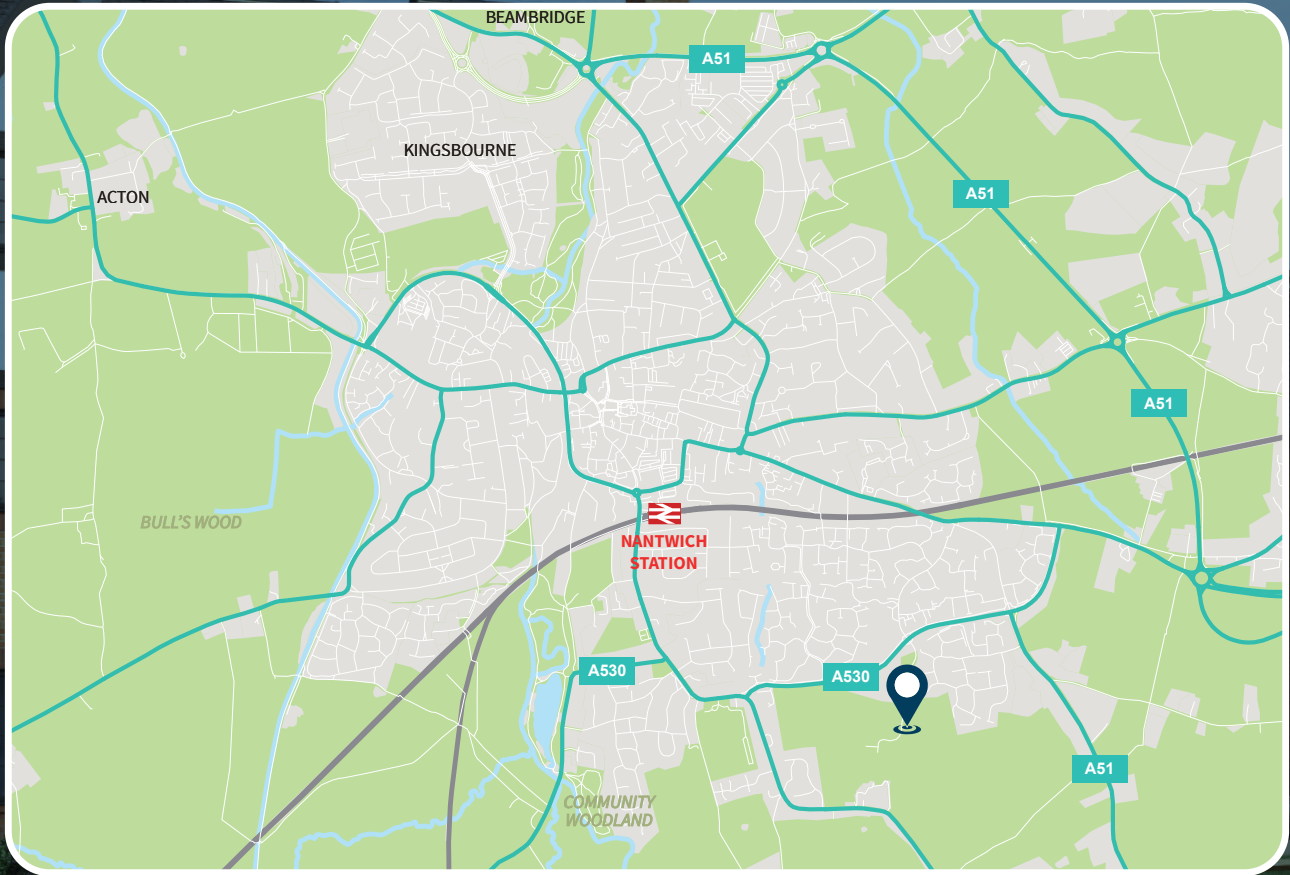


Anwyl Homes is a registered developer with the NHQB. The images on this literature are computer-generated. Specific plots may be 'handed' (mirrored), detached/semi-detached, elevation treatment/roof materials may vary, and any garages may be single or double. Room sizes are approximate, dimensions are taken from the longest room point and are for guidance only. Kitchen and bathroom layouts are indicative. These plans are correct at the time of creation but may be subject to change during construction. Please speak to your Homes Adviser for more details. The Stapeley 30/03/26.

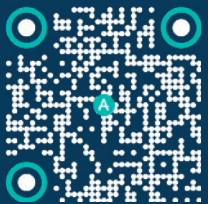


Predicted EPC rating


# How to find us



## Find us on Trustpilot



 Peter Destapleigh Way, Nantwich, CW5 7GZ

 01270 390 107

 [weaverforge@anwyl.co.uk](mailto:weaverforge@anwyl.co.uk)

 [spelling.snack.overheard](https://www.instagram.com/spelling.snack.overheard)



Anwyl Construction Company Limited has taken all reasonable care in the preparation of the contents of this document and intends that the information is accurate at the time it is printed. However, such information can be subject to change and therefore we do not warrant its accuracy. Particulars are for illustration only and all images are indicative only. We operate a policy of continuous product development and individual features may vary from time to time. Consequently, these particulars should be treated as general guidance only and do not constitute a contract, part of a contract, or a warranty. You should take appropriate steps to verify any information upon which you wish to rely. To find out more about a development, we advise that you visit the site sales office during opening hours and speak to one of our Homes Advisers.