



The Croft

3 bed detached

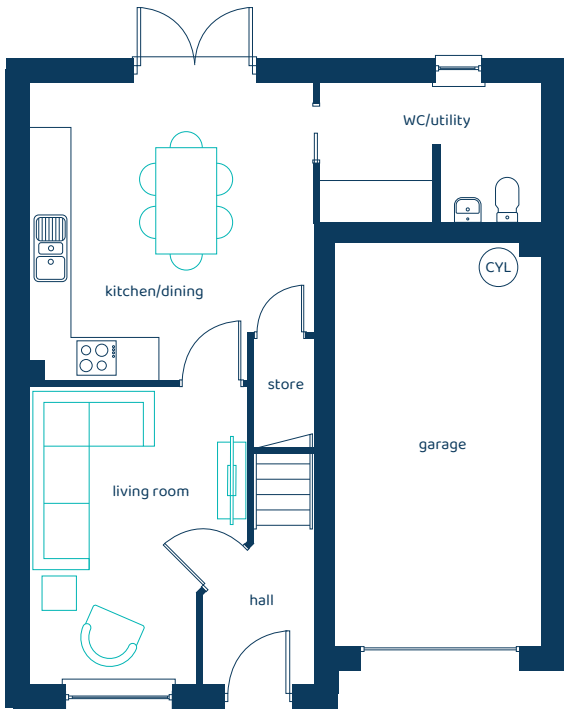
A luxurious three-bedroom detached home with three bathrooms and an integrated garage.

ANWYL



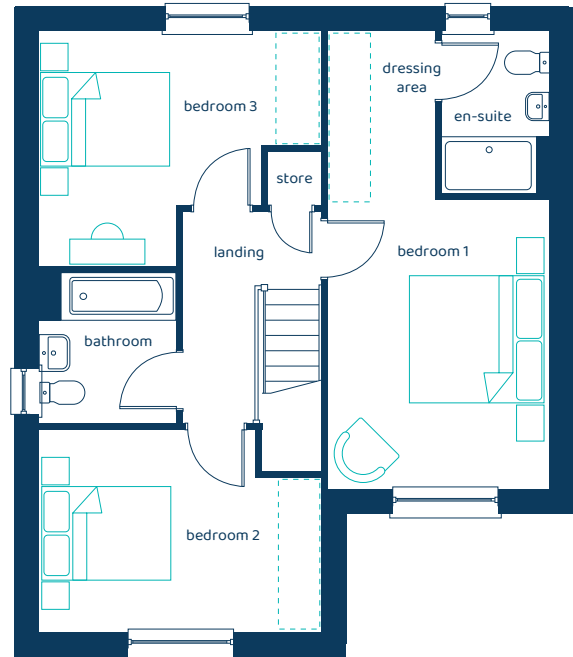
anwylhomes.co.uk

Ground Floor Plan



Room	Imperial	Metric
Living Room	10'5" x 14'5"	3.16m x 4.38m
Kitchen/Dining	13'8" x 14'4"	4.17m x 4.37m
WC/Utility	10'8" x 6'8"	3.26m x 2.03m
Garage	10'1" x 19'8"	3.08m x 6.00m


First Floor Plan



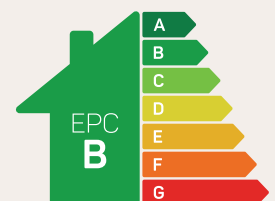
Room	Imperial	Metric
Bedroom 1	10'9" x 14'1"	3.28m x 4.29m
Bedroom 2	13'8" x 9'10"	4.17m x 2.99m
Bedroom 3	13'8" x 11'5"	4.17m x 3.47m
Bathroom	6'7" x 7'3"	2.01m x 2.21m
En-Suite	5'2" x 7'10"	1.58m x 2.39m
Dressing Area	5'3" x 8'2"	1.61m x 2.49m

The Croft

3 bed detached

 Option for Built-in-Wardrobe.

Anwyl Homes is a registered developer with the NHQB. The images on this literature are computer-generated. Specific plots may be 'handed' (mirrored), detached/semi-detached, elevation treatment/roof materials may vary, and any garages may be single or double. Room sizes are approximate, dimensions are taken from the longest room point and are for guidance only. Kitchen and bathroom layouts are indicative. These plans are correct at the time of creation but may be subject to change during construction. Please speak to your Homes Adviser for more details. The Croft 15/05/26.



Predicted EPC rating