



# The Walton

5 bed detached, 3 storey

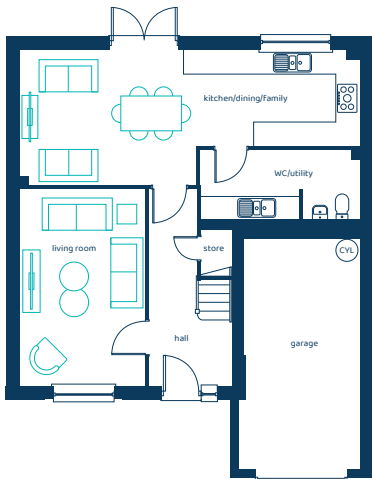
A luxurious, beautifully styled five-bedroom home with three storeys and a large master suite on the top floor.

**ANWYL**



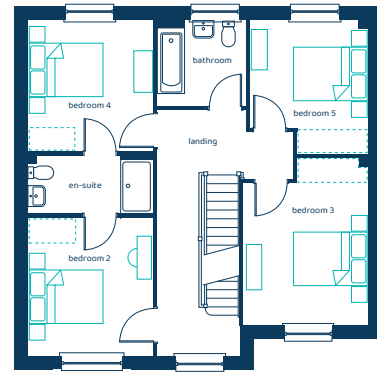
[anwylhomes.co.uk](http://anwylhomes.co.uk)

## Ground Floor Plan



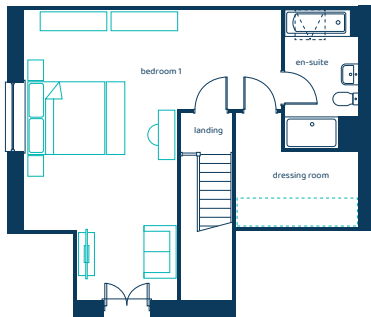
Room	Imperial	Metric
Living Room	10'7" x 16'8"	3.22m x 5.08m
Kitchen/ Dining/Family	28'11" x 11'4"	8.80m x 3.45m
WC/Utility	13'6" x 6'5"	4.11m x 1.95m
Garage	10'4" x 19'8"	3.16m x 6.00m

## First Floor Plan



Room	Imperial	Metric
Bedroom 2	10'7" x 11'9"	3.22m x 3.57m
Bedroom 3	10'7" x 14'3"	3.23m x 4.34m
Bedroom 4	10'7" x 11'2"	3.22m x 3.39m
Bedroom 5	10'0" x 11'4"	3.06m x 3.46m
Bathroom	7'6" x 7'4"	2.27m x 2.23m
En-Suite	10'7" x 4'11"	3.22m x 1.50m

## Second Floor Plan



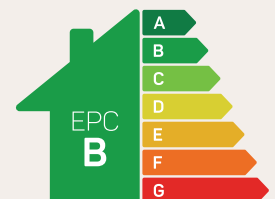
Room	Imperial	Metric
Bedroom 1	22'0" x 23'4"	6.71m x 7.11m
Dressing Room	10'6" x 8'5"	3.19m x 2.57m
En-Suite	6'4" x 11'10"	1.92m x 3.62m

# The Walton

## 5 bed detached, 3 storey

Areas of reduced head height are present to the upper floor.  Option for Built-in-Wardrobe.

Anwyl Homes is a registered developer with the NHQB. The images on this literature are computer-generated. Specific plots may be 'handed' (mirrored), detached/semi-detached, elevation treatment/roof materials may vary, and any garages may be single or double. Room sizes are approximate, dimensions are taken from the longest room point and are for guidance only. Kitchen and bathroom layouts are indicative. These plans are correct at the time of creation but may be subject to change during construction. Please speak to your Homes Adviser for more details. The Walton 15/05/26.



Predicted EPC rating