



The Whittle

4 bed detached

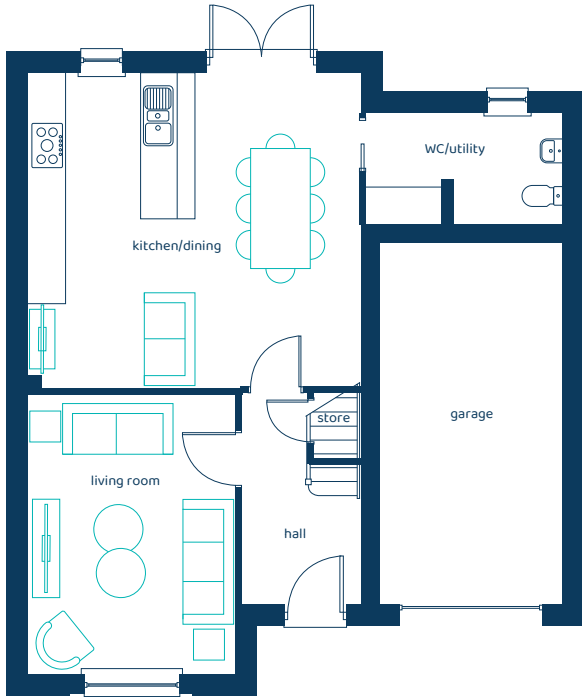
A large four-bedroom detached home with spacious kitchen/
dining space and an integrated garage.

ANWYL



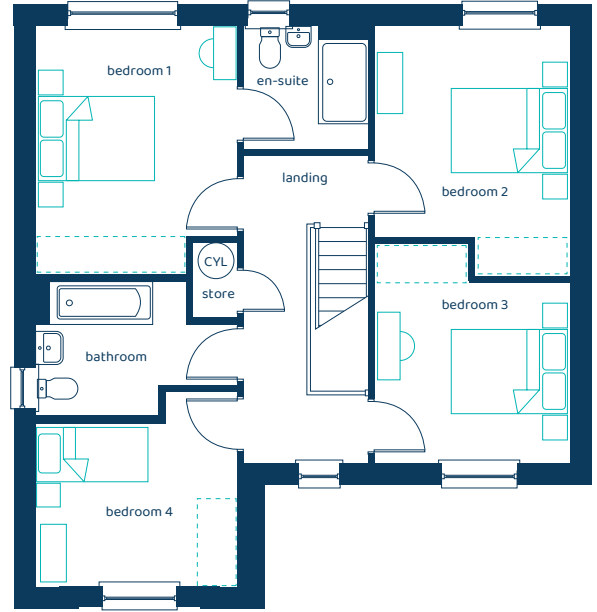
anwylhomes.co.uk

Ground Floor Plan



Room	Imperial	Metric
Living Room	11'1" x 15'1"	3.38m x 4.59m
Kitchen/Dining	18'0" x 17'0"	5.47m x 5.18m
WC/Utility	10'7" x 5'11"	3.22m x 1.80m
Garage	9'11" x 19'8"	3.01m x 6.00m


First Floor Plan



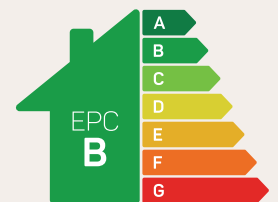
Room	Imperial	Metric
Bedroom 1	10'10" x 13'5"	3.31m x 4.09m
Bedroom 2	10'7" x 13'7"	3.22m x 4.14m
Bedroom 3	10'7" x 11'10"	3.22m x 3.62m
Bedroom 4	10'10" x 10'7"	3.31m x 3.22m
Bathroom	10'10" x 7'3"	3.31m x 2.22m
En-Suite	6'10" x 6'8"	2.07m x 2.04m

The Whittle

4 bed detached

 Option for Built-in-Wardrobe.

Anwyl Homes is a registered developer with the NHQB. The images on this literature are computer-generated. Specific plots may be 'handed' (mirrored), detached/semi-detached, elevation treatment/roof materials may vary, and any garages may be single or double. Room sizes are approximate, dimensions are taken from the longest room point and are for guidance only. Kitchen and bathroom layouts are indicative. These plans are correct at the time of creation but may be subject to change during construction. Please speak to your Homes Adviser for more details. The Whittle 15/05/26.



Predicted EPC rating