



Lottie Gardens

ANWYI

01513 059533
anwyl.co.uk/lottie

When it comes to *new homes* we think of everything.

There's so much to consider when you're looking for a new home. From the size to the location, the build quality to the price, making the right choice really matters.



At Anwyl Homes, we know what it's like.

We should do. After all we've been building high quality new homes for decades, guiding our customers through the process and helping to unlock happy times ahead.

Whether you're looking for a cosy first property, a spacious family base or you want to downsize now the kids have moved on, there's an Anwyl home that's right for you.

By combining traditional styling and quality workmanship with the best of today's modern features - not to mention personal touches and friendly smiles every step of the way - your Anwyl experience begins the moment you get in touch. Because with every new home we build, you can be sure we're thinking of you.



Welcome to the *neighbourhood.*

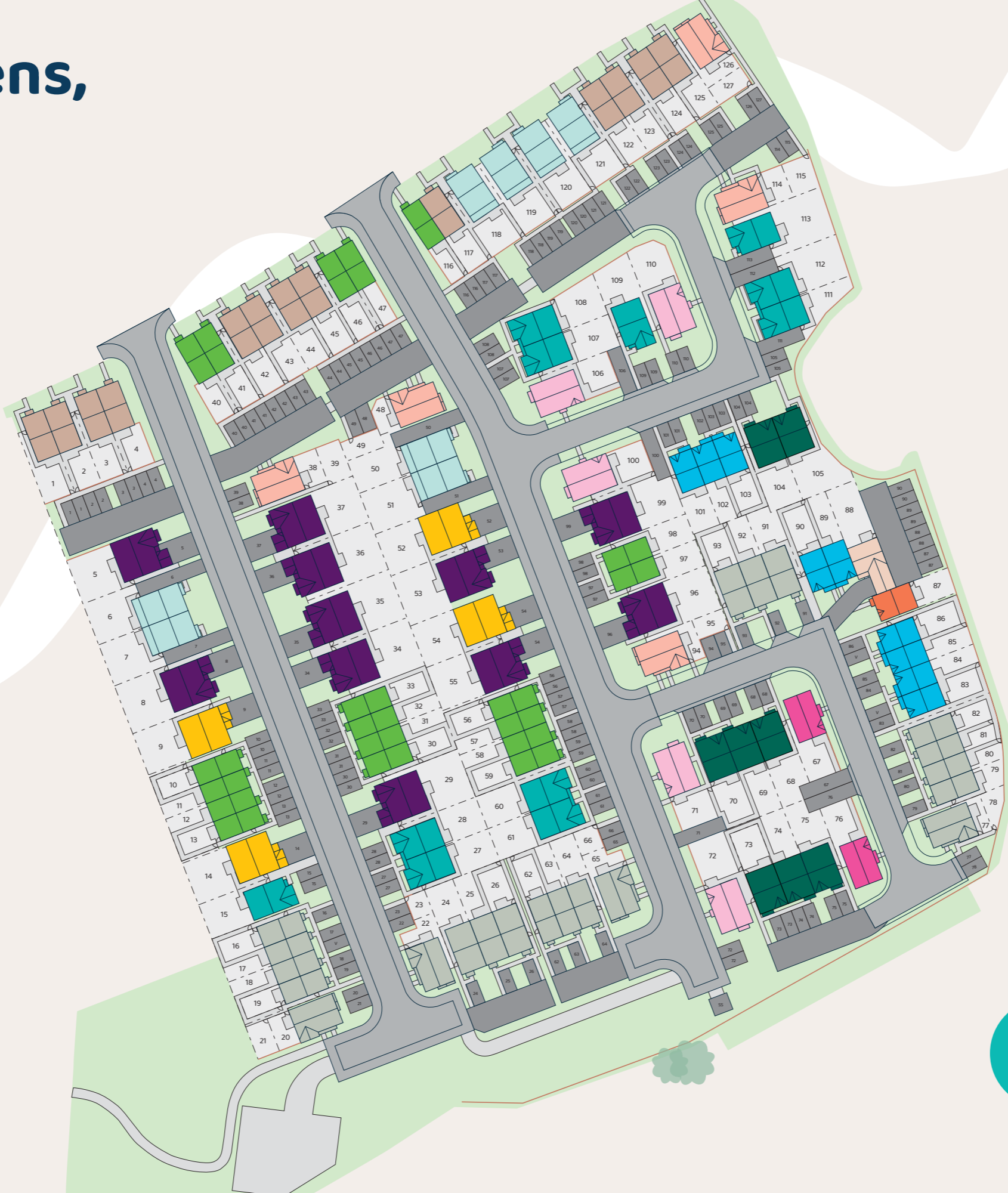
Welcome to Lottie Gardens, an exciting new collection of one, two, three and four-bedroom homes in Bebington.

Ideally located on the Wirral Peninsula, Bebington offers the perfect balance of green space and city access. With Liverpool and Manchester within easy reach, plus excellent schools, shops, gyms and restaurants nearby, it's a great place to call home. Enjoy coastal walks, countryside strolls or exciting days out – all from a well-connected, welcoming community with something for everyone.

Designed for modern living, our energy-efficient homes effortlessly combine luxury and sustainability offering the perfect setting for the future, whether you're downsizing, upsizing or simply seeking a fresh start.



Lottie Gardens, Bebington



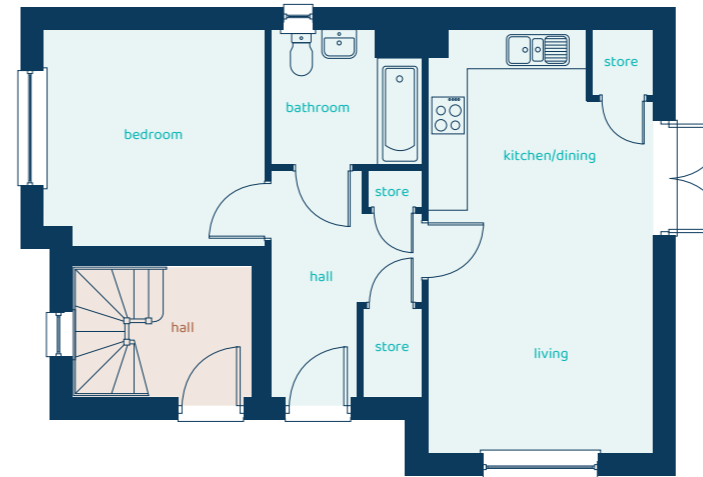
Key:

- Ascot
- Audlem
- Birkdale
- Bunbury
- Burton
- Cheltenham
- Eccleston
- Ellen
- Evesham
- Hulme
- Lymm
- Marlow
- Styal
- Affordable

This plan is a general site layout, not to scale and is intended for guidance only. It does not form any part of the contract. The plan does not show ownership boundaries, easements or wayleaves. Anwyl Homes reserve the right to alter or replan at any time. Any information provided in relation to Housing Association / Section 106 / Local Authority / Investors, tenure / location / volume is 'subject to change'. Please ask our homes adviser for specific plot details. Turf to rear gardens is not provided. 31/03/2026



Ground Floor Apartment



| Room | Imperial | Metric |
|-----------------------|----------------|---------------|
| Kitchen/Dining Living | 21'10" x 11'6" | 6.66m x 3.51m |
| Bedroom | 11'1" x 11'4" | 3.38m x 3.46m |
| Bathroom | 6'11" x 7'7" | 2.11m x 2.32m |

First Floor Apartment



| Room | Imperial | Metric |
|-----------------------|----------------|---------------|
| Kitchen/Dining/Living | 21'10" x 11'6" | 6.66m x 3.51m |
| Bedroom | 11'11" x 11'8" | 3.64m x 3.56m |
| Bathroom | 7'1" x 7'7" | 2.15m x 2.30m |

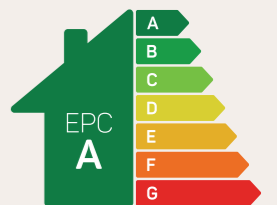
The Styal

1 bed apartment

Convenient apartment living with open-plan spaces, plenty of storage and off-road parking.



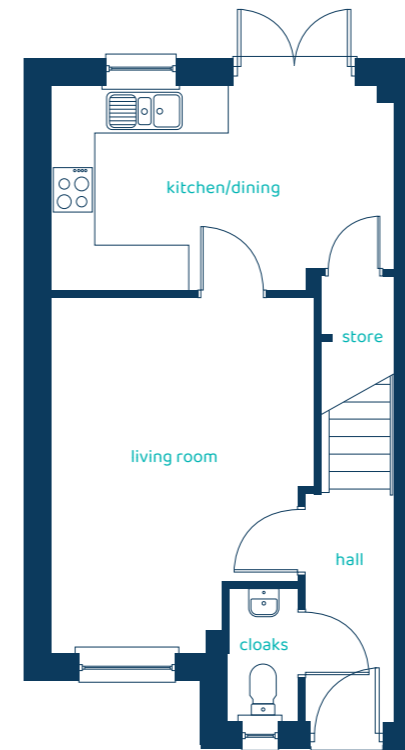
Anwyl Homes is a registered developer with the NHQB. The images on this literature are computer-generated. Specific plots may be 'handed' (mirrored), detached/semi-detached, elevation treatment/roof materials may vary, and any garages may be single or double. Room sizes are approximate, dimensions are taken from the longest room point and are for guidance only. Kitchen and bathroom layouts are indicative. These plans are correct at the time of creation but may be subject to change during construction. Please speak to your Homes Adviser for more details. The Styal 31/03/2026.



Predicted EPC rating

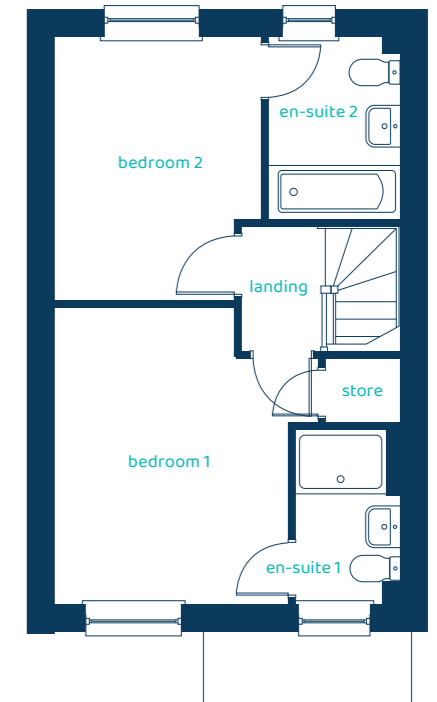


Ground Floor Plan



| Room | Imperial | Metric |
|----------------|---------------|---------------|
| Living Room | 11'5" x 15'4" | 3.47m x 4.68m |
| Kitchen/Dining | 14'9" x 8'9" | 4.51m x 2.67m |
| Cloaks | 2'11" x 5'8" | 0.90m x 1.73m |

First Floor Plan



| Room | Imperial | Metric |
|------------|---------------|---------------|
| Bedroom 1 | 10'0" x 12'9" | 3.05m x 3.89m |
| En-Suite | 4'6" x 7'6" | 1.36m x 2.29m |
| Bedroom 2 | 8'10" x 11'4" | 2.70m x 3.46m |
| En-Suite 2 | 5'7" x 7'10" | 1.71m x 2.38m |

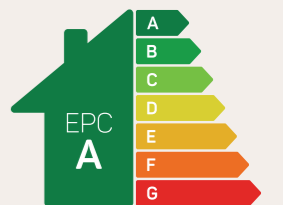
The Burton

2 bed semi-detached / mid mews / end mews

The Burton offers a luxurious take on a two-bedroom home, finished to an impeccable standard, with a superior specification throughout.



Anwyl Homes is a registered developer with the NHQB. The images on this literature are computer-generated. Specific plots may be 'handed' (mirrored), detached/semi-detached, elevation treatment/roof materials may vary, and any garages may be single or double. Room sizes are approximate, dimensions are taken from the longest room point and are for guidance only. Kitchen and bathroom layouts are indicative. These plans are correct at the time of creation but may be subject to change during construction. Please speak to your Homes Adviser for more details. The Burton 31/03/2026.



Predicted EPC rating



Ground Floor Plan



| Room | Imperial | Metric |
|---------------|---------------|---------------|
| Dining/Living | 18'3" x 12'0" | 5.56m x 3.65m |
| Kitchen | 11'3" x 8'10" | 3.42m x 2.69m |
| Cloaks | 5'10" x 3'2" | 1.79m x 0.98m |

First Floor Plan



| Room | Imperial | Metric |
|-----------|---------------|---------------|
| Bedroom 1 | 16'6" x 9'2" | 5.03m x 2.78m |
| Bedroom 2 | 11'8" x 9'4" | 3.55m x 2.83m |
| Bedroom 3 | 11'10" x 6'8" | 3.62m x 2.03m |
| Bathroom | 7'10" x 7'9" | 2.83m x 2.36m |

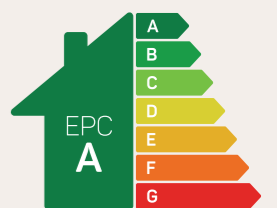
The Audlem

3 bed semi-detached

A wonderful three-bedroom home that's ideal for young families and perfect for downsizers.



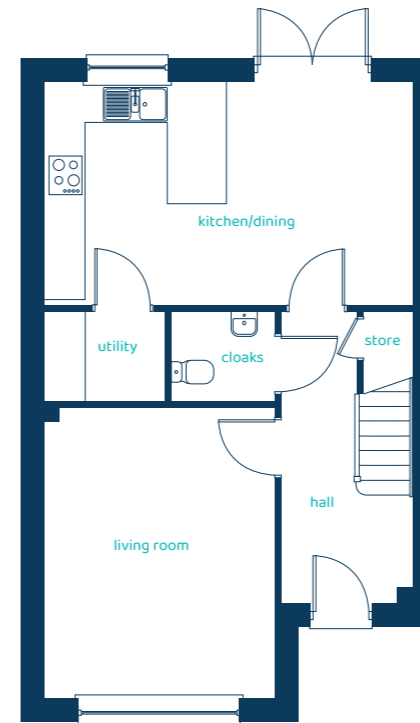
Anwyl Homes is a registered developer with the NHQB. The images on this literature are computer-generated. Specific plots may be 'handed' (mirrored), detached/semi-detached, elevation treatment/roof materials may vary, and any garages may be single or double. Room sizes are approximate, dimensions are taken from the longest room point and are for guidance only. Kitchen and bathroom layouts are indicative. These plans are correct at the time of creation but may be subject to change during construction. Please speak to your Homes Adviser for more details. The Audlem 31/03/2026.



Predicted EPC rating

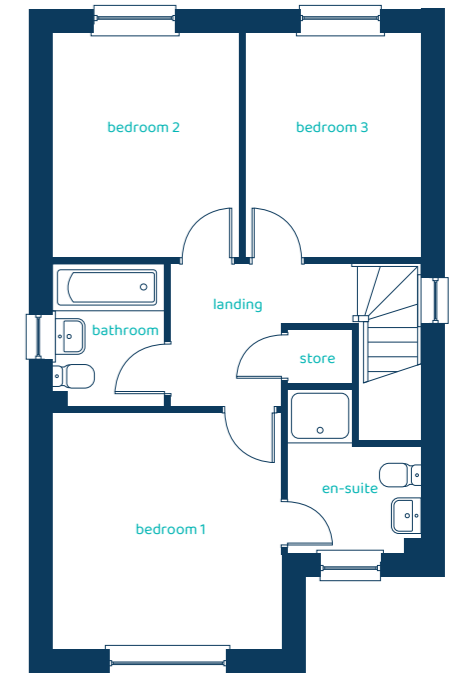


Ground Floor Plan



| Room | Imperial | Metric |
|----------------|---------------|---------------|
| Living Room | 11'6" x 14'8" | 3.51m x 4.47m |
| Kitchen/Dining | 18'6" x 11'2" | 5.65m x 3.41m |
| Utility | 6'1" x 4'5" | 1.85m x 1.35m |
| Cloaks | 5'2" x 4'5" | 1.57m x 1.35m |

First Floor Plan



| Room | Imperial | Metric |
|-----------|----------------|---------------|
| Bedroom 1 | 11'6" x 11'11" | 3.51m x 3.62m |
| En-Suite | 6'8" x 8'3" | 2.04m x 2.53m |
| Bedroom 2 | 9'5" x 11'4" | 2.86m x 3.46m |
| Bedroom 3 | 8'10" x 11'4" | 2.69m x 3.46m |
| Bathroom | 5'7" x 7'1" | 1.71m x 2.15m |

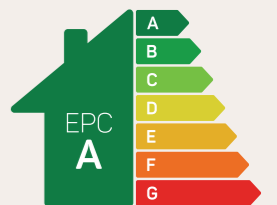
The Birkdale

3 bed semi-detached / detached

Comfort and convenience combine in this superbly designed three-bedroom semi-detached home.



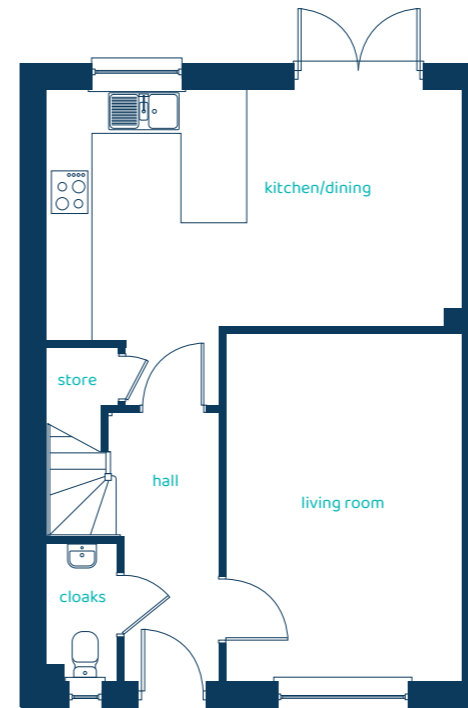
Anwyl Homes is a registered developer with the NHQB. The images on this literature are computer-generated. Specific plots may be 'handed' (mirrored), detached/semi-detached, elevation treatment/roof materials may vary, and any garages may be single or double. Room sizes are approximate, dimensions are taken from the longest room point and are for guidance only. Kitchen and bathroom layouts are indicative. These plans are correct at the time of creation but may be subject to change during construction. Please speak to your Homes Adviser for more details. The Birkdale 31/03/2026.



Predicted EPC rating

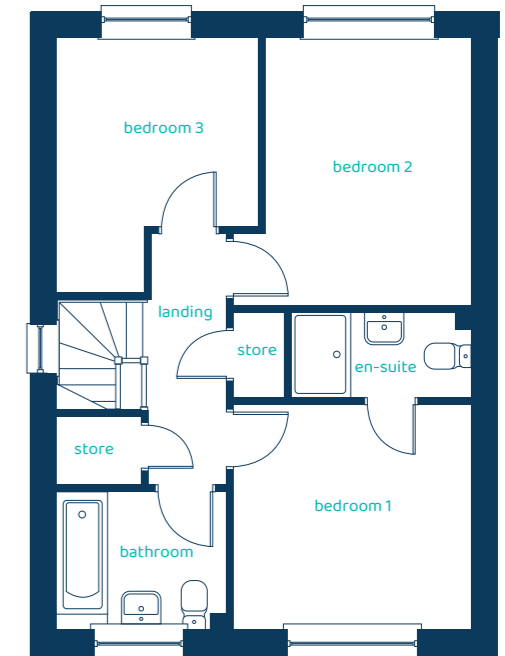


Ground Floor Plan



| Room | Imperial | Metric |
|----------------|----------------|---------------|
| Living Room | 10'8" x 15'10" | 3.25m x 4.82m |
| Kitchen/Dining | 18'11" x 10'9" | 5.76m x 3.27m |
| Cloaks | 3'2" x 6'3" | 0.97m x 1.90m |

First Floor Plan



| Room | Imperial | Metric |
|-----------|----------------|---------------|
| Bedroom 1 | 10'10" x 10'3" | 3.31m x 3.12m |
| En-Suite | 8'2" x 3'11" | 2.50m x 1.20m |
| Bedroom 2 | 9'5" x 12'3" | 2.86m x 3.73m |
| Bedroom 3 | 9'3" x 11'9" | 2.81m x 3.57m |
| Bathroom | 7'9" x 6'3" | 2.36m x 1.90m |

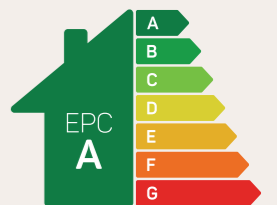
The Bunbury

3 bed semi-detached / mid mews / end mews

Three bedrooms and a host of modern features make a great home for families and first-time buyers.



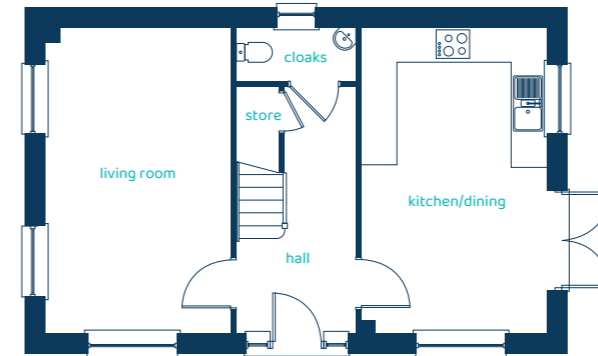
Anwyl Homes is a registered developer with the NHQB. The images on this literature are computer-generated. Specific plots may be 'handed' (mirrored), detached/semi-detached, elevation treatment/roof materials may vary, and any garages may be single or double. Room sizes are approximate, dimensions are taken from the longest room point and are for guidance only. Kitchen and bathroom layouts are indicative. These plans are correct at the time of creation but may be subject to change during construction. Please speak to your Homes Adviser for more details. The Bunbury 31/03/2026.



Predicted EPC rating

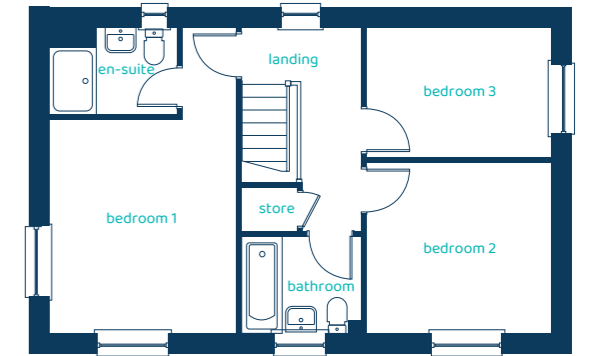


Ground Floor Plan



| Room | Imperial | Metric |
|----------------|----------------|---------------|
| Living Room | 10'9" x 17'10" | 3.26m x 5.42m |
| Kitchen/Dining | 10'9" x 17'10" | 3.26m x 5.42m |
| Cloaks | 6'10" x 3'1" | 2.08m x 0.95m |

First Floor Plan



| Room | Imperial | Metric |
|-----------|----------------|---------------|
| Bedroom 1 | 10'11" x 12'5" | 3.32m x 3.79m |
| En-Suite | 7'5" x 5'1" | 2.26m x 1.54m |
| Bedroom 2 | 10'9" x 9'11" | 3.28m x 3.02m |
| Bedroom 3 | 10'8" x 7'7" | 3.25m x 2.31m |
| Bathroom | 6'11" x 5'7" | 2.10m x 1.71m |

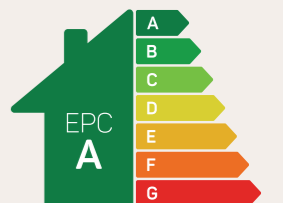
The Eccleston

3 bed detached

Enjoy every moment of your day in this superb three-bedroom detached home.



Anwyl Homes is a registered developer with the NHQB. The images on this literature are computer-generated. Specific plots may be 'handed' (mirrored), detached/semi-detached, elevation treatment/roof materials may vary, and any garages may be single or double. Room sizes are approximate, dimensions are taken from the longest room point and are for guidance only. Kitchen and bathroom layouts are indicative. These plans are correct at the time of creation but may be subject to change during construction. Please speak to your Homes Adviser for more details. The Eccleston 31/03/2026.



Predicted EPC rating



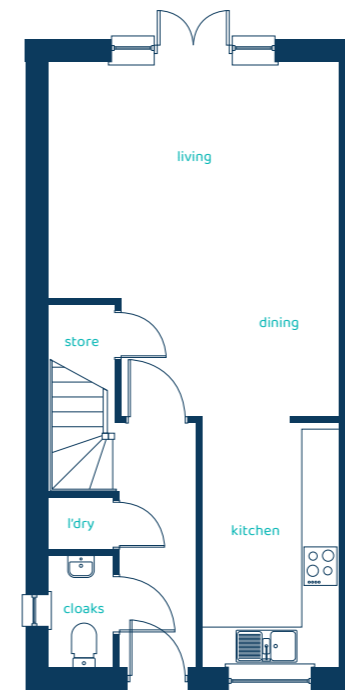
The Ellen

3 bed semi-detached

Three bedrooms and a study help make this three-storey home a great space for the bustle of family life.

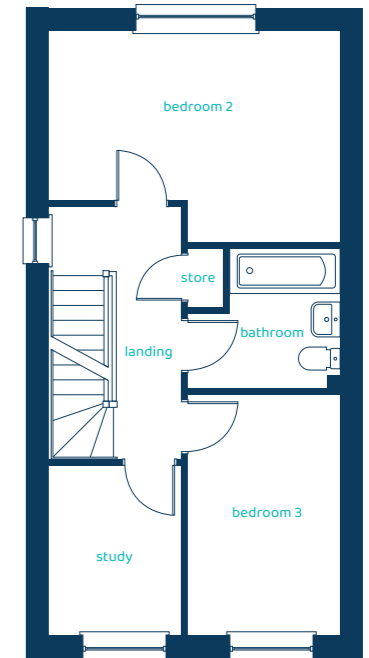


Ground Floor Plan



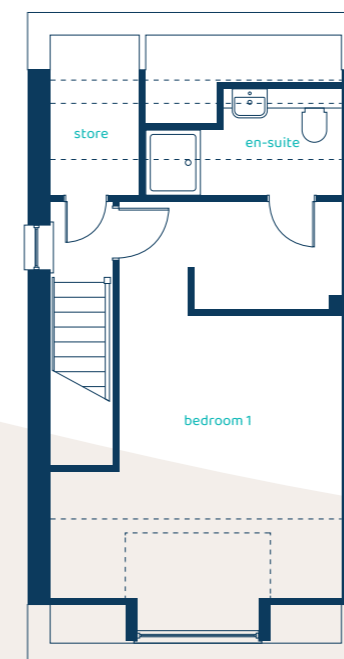
| Room | Imperial | Metric |
|---------|---------------|---------------|
| Living | 14'7" x 11'9" | 4.45m x 3.58m |
| Dining | 11'0" x 6'0" | 3.34m x 1.82m |
| Kitchen | 6'11" x 12'2" | 2.09m x 3.70m |
| Laundry | 3'2" x 2'8" | 0.97m x 0.80m |
| Cloaks | 3'2" x 5'7" | 0.97m x 1.70m |

First Floor Plan



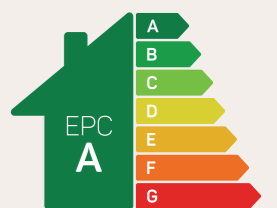
| Room | Imperial | Metric |
|-----------|---------------|---------------|
| Bedroom 2 | 14'7" x 10'8" | 4.45m x 3.24m |
| Bedroom 3 | 7'9" x 12'1" | 2.35m x 3.67m |
| Study | 6'7" x 8'6" | 2.00m x 2.60m |
| Bathroom | 7'9" x 7'1" | 2.35m x 2.15m |

Second Floor Plan



| Room | Imperial | Metric |
|---------------|---------------|---------------|
| Bedroom 1 | 14'6" x 15'9" | 4.42m x 4.80m |
| En-Suite | 9'10" x 5'4" | 2.98m x 1.63m |
| Dressing Area | 7'5" x 5'5" | 2.25m x 1.65m |

Anwyl Homes is a registered developer with the NHQB. The images on this literature are computer-generated. Specific plots may be 'handed' (mirrored), detached/semi-detached, elevation treatment/roof materials may vary, and any garages may be single or double. Room sizes are approximate, dimensions are taken from the longest room point and are for guidance only. Kitchen and bathroom layouts are indicative. These plans are correct at the time of creation but may be subject to change during construction. Please speak to your Homes Adviser for more details. The Ellen 31/03/2026.



Predicted EPC rating



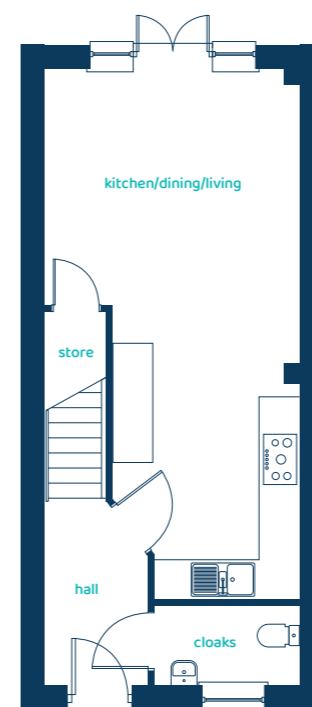
The Hulme

3 bed semi-detached / mid mews / end mews

A beautiful three-bedroom, three-storey home designed for all the fun of family life.

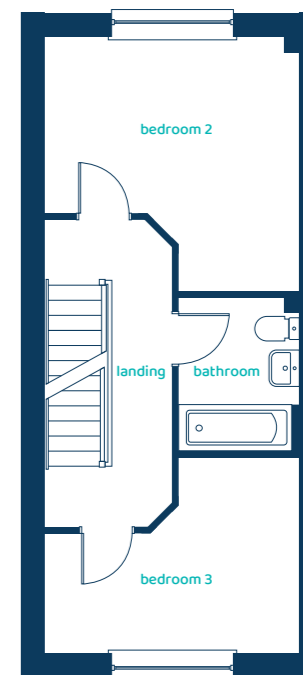


Ground Floor Plan



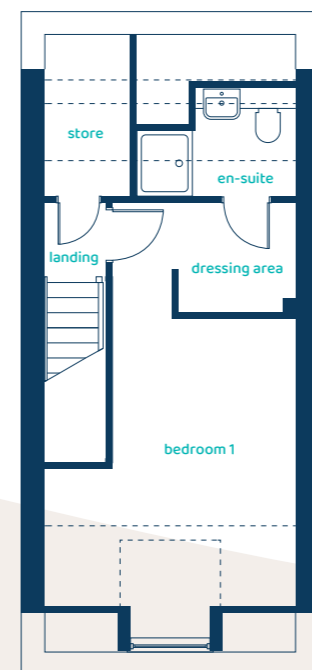
| Room | Imperial | Metric |
|-----------------------|---------------|---------------|
| Kitchen/Dining/Living | 26'2" x 12'6" | 7.98m x 3.80m |
| Cloaks | 7'2" x 3'10" | 2.18m x 1.18m |

First Floor Plan



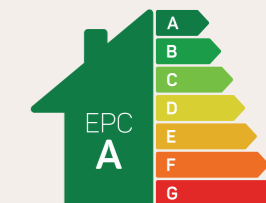
| Room | Imperial | Metric |
|-----------|---------------|---------------|
| Bedroom 2 | 12'6" x 12'7" | 3.80m x 3.83m |
| Bedroom 3 | 12'6" x 9'8" | 3.80m x 2.93m |
| Bathroom | 5'11" x 7'7" | 1.81m x 2.30m |

Second Floor Plan



| Room | Imperial | Metric |
|---------------|---------------|---------------|
| Bedroom 1 | 12'5" x 15'9" | 3.77m x 4.80m |
| En-Suite | 7'10" x 5'4" | 2.38m x 1.63m |
| Dressing Area | 5'9" x 5'5" | 1.75m x 1.65m |

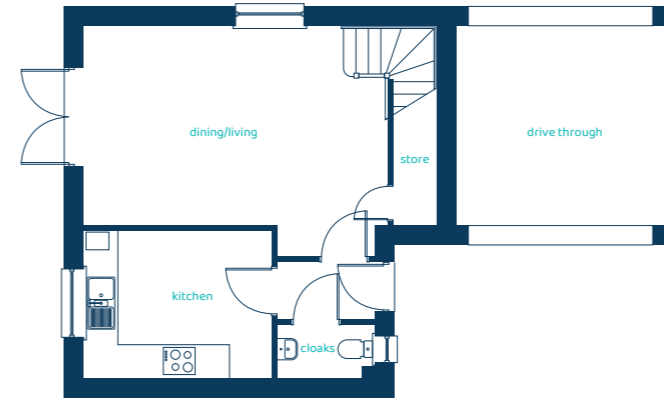
Anwyl Homes is a registered developer with the NHQB. The images on this literature are computer-generated. Specific plots may be 'handed' (mirrored), detached/semi-detached, elevation treatment/roof materials may vary, and any garages may be single or double. Room sizes are approximate, dimensions are taken from the longest room point and are for guidance only. Kitchen and bathroom layouts are indicative. These plans are correct at the time of creation but may be subject to change during construction. Please speak to your Homes Adviser for more details. The Hulme 31/03/2026.



Predicted EPC rating

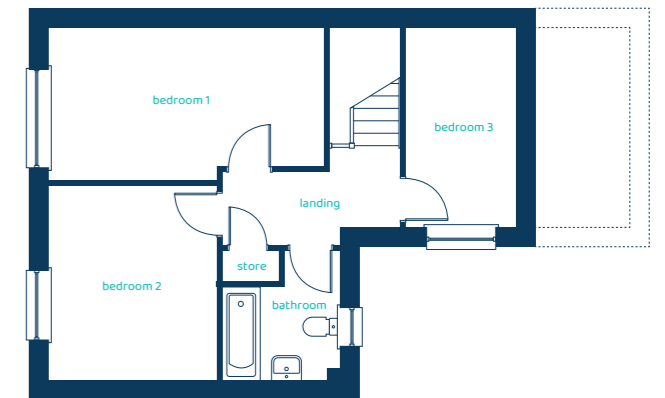


Ground Floor Plan



| Room | Imperial | Metric |
|---------------|---------------|---------------|
| Dining/Living | 17'1" x 14'6" | 5.20m x 4.41m |
| Kitchen | 10'1" x 10'0" | 3.08m x 3.05m |
| Cloaks | 2'10" x 6'4" | 0.87m x 1.92m |

First Floor Plan



| Room | Imperial | Metric |
|-----------|---------------|---------------|
| Bedroom 1 | 12'4" x 12'5" | 3.77m x 3.79m |
| Bedroom 2 | 8'10" x 12'1" | 2.69m x 3.67m |
| Bedroom 3 | 7'9" x 11'10" | 2.36m x 3.62m |
| Bathroom | 6'10" x 8'6" | 2.07m x 2.60m |

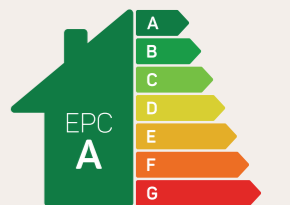
The Marlow

3 bed mid mews

A wonderful three-bedroom home that's perfect for young families or downsizers who still want a little extra space.



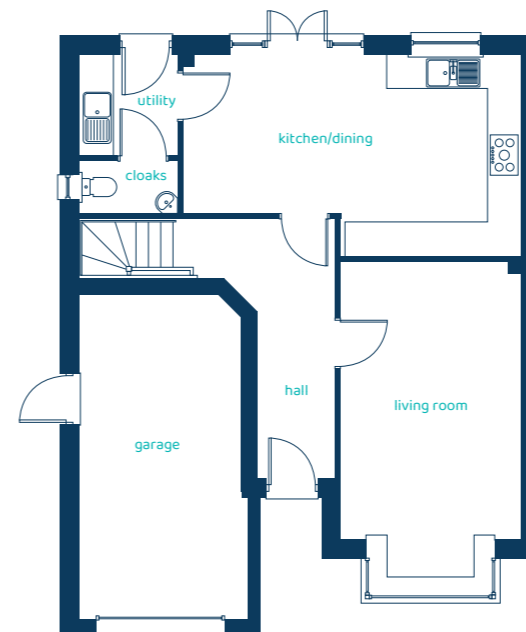
Anwyl Homes is a registered developer with the NHQB. The images on this literature are computer-generated. Specific plots may be 'handed' (mirrored), detached/semi-detached, elevation treatment/roof materials may vary, and any garages may be single or double. Room sizes are approximate, dimensions are taken from the longest room point and are for guidance only. Kitchen and bathroom layouts are indicative. These plans are correct at the time of creation but may be subject to change during construction. Please speak to your Homes Adviser for more details. The Marlow 31/03/2026.



Predicted EPC rating

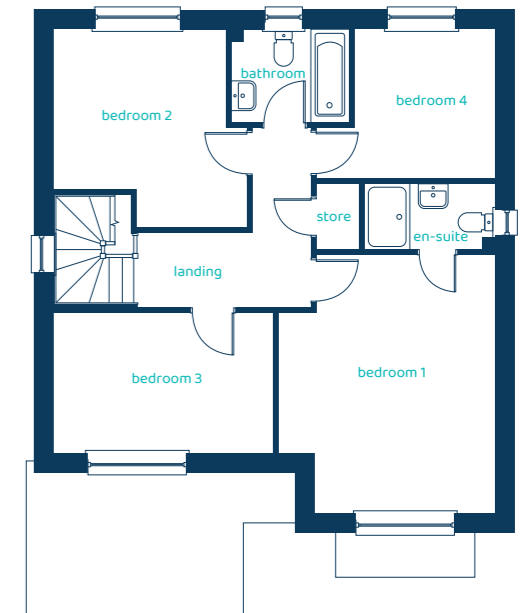


Ground Floor Plan



| Room | Imperial | Metric |
|----------------|---------------|---------------|
| Living Room | 10'9" x 19'4" | 3.29m x 5.88m |
| Kitchen/Dining | 20'5" x 12'1" | 6.23m x 3.67m |
| Utility | 5'11" x 6'1" | 1.80m x 1.85m |
| Cloaks | 5'11" x 3'1" | 1.80m x 0.95m |

First Floor Plan



| Room | Imperial | Metric |
|-----------|---------------|---------------|
| Bedroom 1 | 13'1" x 15'8" | 3.99m x 4.76m |
| En-Suite | 7'10" x 3'11" | 2.39m x 1.20m |
| Bedroom 2 | 12'0" x 11'8" | 3.65m x 3.55m |
| Bedroom 3 | 13'5" x 8'5" | 4.04m x 2.56m |
| Bedroom 4 | 8'6" x 9'0" | 2.58m x 2.73m |
| Bathroom | 7'2" x 5'7" | 2.18m x 1.71m |

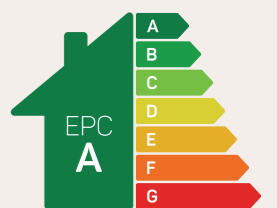
The Ascot

4 bed detached

With four bedrooms and integral garage, this detached home is a family favourite.



Anwyl Homes is a registered developer with the NHQB. The images on this literature are computer-generated. Specific plots may be 'handed' (mirrored), detached/semi-detached, elevation treatment/roof materials may vary, and any garages may be single or double. Room sizes are approximate, dimensions are taken from the longest room point and are for guidance only. Kitchen and bathroom layouts are indicative. These plans are correct at the time of creation but may be subject to change during construction. Please speak to your Homes Adviser for more details. The Ascot 31/03/2026.



Predicted EPC rating



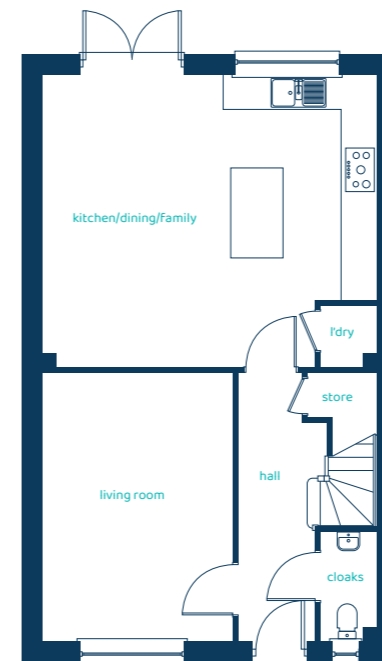
The Cheltenham

4 bed semi-detached / detached

With its blend of traditional styling and modern, open-plan living, the Cheltenham is a welcoming place to come home to.

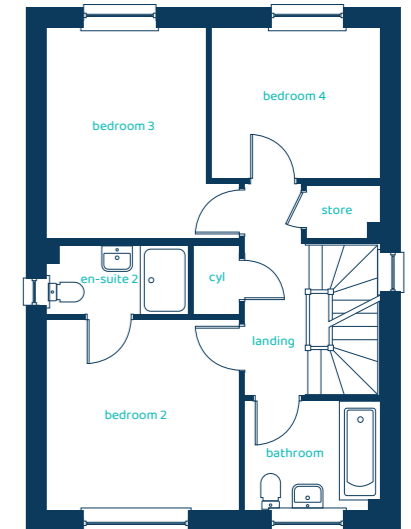


Ground Floor Plan



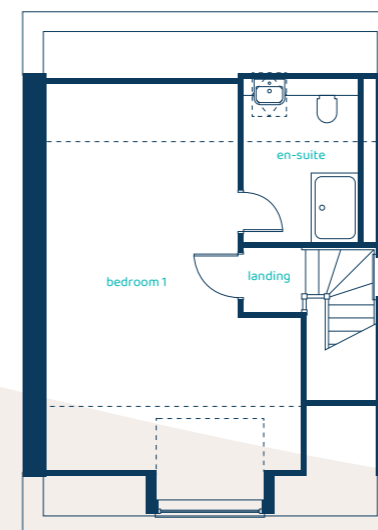
| Room | Imperial | Metric |
|-----------------------|----------------|---------------|
| Living Room | 10'8" x 15'2" | 3.25m x 4.63m |
| Kitchen/Dining/Family | 18"11" x 16'6" | 5.76m x 5.03m |
| Laundry | 3'1" x 3'5" | 0.95m x 1.03m |
| Cloaks | 3'1" x 6'2" | 0.95m x 1.88m |

First Floor Plan



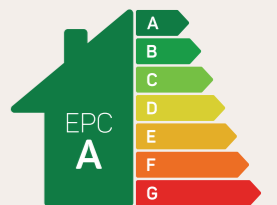
| Room | Imperial | Metric |
|------------|-----------------|---------------|
| Bedroom 2 | 10'11" x 10'10" | 3.33m x 3.29m |
| En-Suite 2 | 8'0" x 3'11" | 2.44m x 1.20m |
| Bedroom 3 | 12'0" x 9'0" | 3.65m x 2.74m |
| Bedroom 4 | 9'7" x 8'6" | 2.93m x 2.60m |
| Bathroom | 7'8" x 6'2" | 2.34m x 1.88m |

Second Floor Plan



| Room | Imperial | Metric |
|------------|----------------|---------------|
| Bedroom 1 | 14'7" x 23'10" | 4.43m x 7.27m |
| En-Suite 1 | 6'7" x 9'4" | 2.00m x 2.85m |

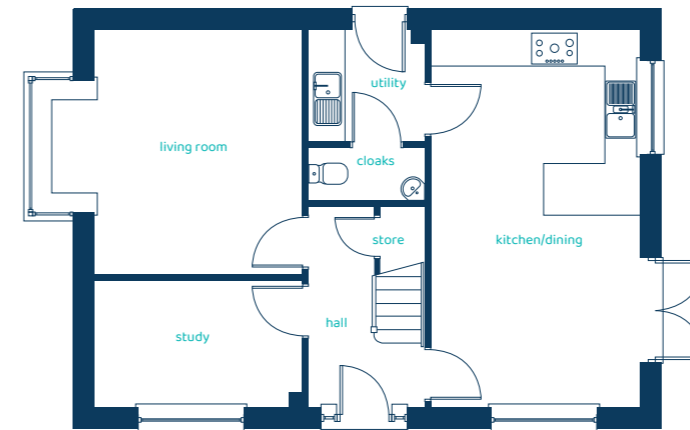
Anwyl Homes is a registered developer with the NHQB. The images on this literature are computer-generated. Specific plots may be 'handed' (mirrored), detached/semi-detached, elevation treatment/roof materials may vary, and any garages may be single or double. Room sizes are approximate, dimensions are taken from the longest room point and are for guidance only. Kitchen and bathroom layouts are indicative. These plans are correct at the time of creation but may be subject to change during construction. Please speak to your Homes Adviser for more details. The Cheltenham 31/03/2026.



Predicted EPC rating

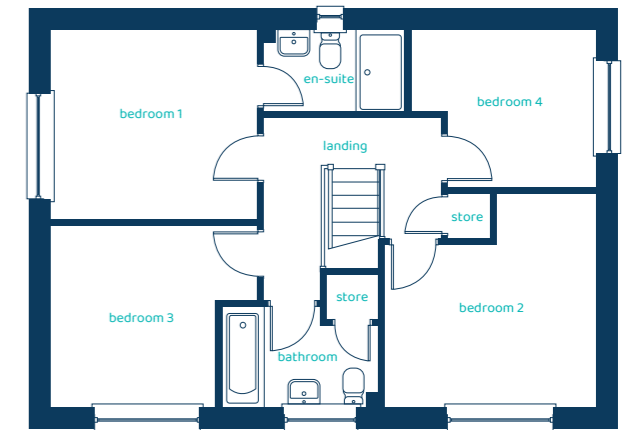


Ground Floor Plan



| Room | Imperial | Metric |
|----------------|---------------|---------------|
| Living Room | 14'2" x 13'9" | 4.33m x 4.18m |
| Kitchen/Dining | 11'9" x 21'1" | 3.57m x 6.43m |
| Utility | 6'5" x 6'3" | 1.95m x 1.90m |
| Cloaks | 6'5" x 3'0" | 1.95m x 0.92m |
| Study | 11'7" x 7'1" | 3.54m x 2.16m |

First Floor Plan



| Room | Imperial | Metric |
|-----------|----------------|---------------|
| Bedroom 1 | 11'8" x 10'8" | 3.55 x 3.25m |
| En-Suite | 8'0" x 4'7" | 2.43m x 1.40m |
| Bedroom 2 | 11'11" x 12'0" | 3.63m x 3.65m |
| Bedroom 3 | 11'8" x 10'2" | 3.55m x 3.09m |
| Bedroom 4 | 10'5" x 8'10" | 3.17m x 2.69m |
| Bathroom | 8'10" x 5'7" | 2.70m x 1.71m |

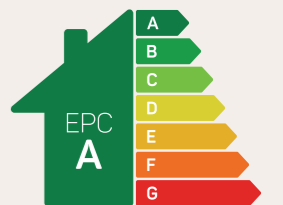
The Evesham

4 bed detached

Superb design and plenty of space make this four bedroom home fantastic for families. With its high ceilings and impressive proportions, this four bedroom home gives families plenty of room to relax.



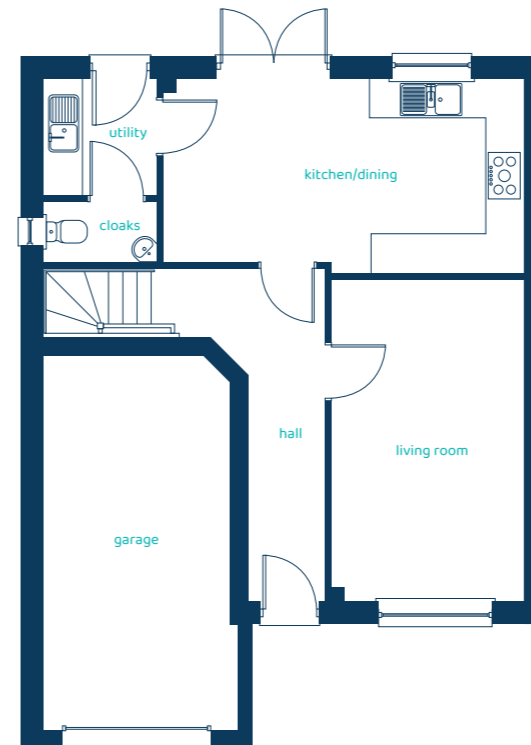
Anwyl Homes is a registered developer with the NHQB. The images on this literature are computer-generated. Specific plots may be 'handed' (mirrored), detached/semi-detached, elevation treatment/roof materials may vary, and any garages may be single or double. Room sizes are approximate, dimensions are taken from the longest room point and are for guidance only. Kitchen and bathroom layouts are indicative. These plans are correct at the time of creation but may be subject to change during construction. Please speak to your Homes Adviser for more details. The Evesham 31/03/2026.



Predicted EPC rating

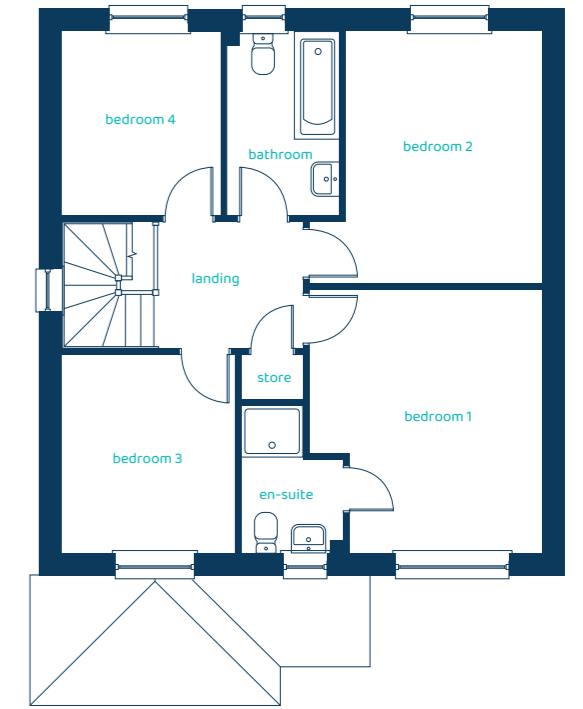


Ground Floor Plan



| Room | Imperial | Metric |
|----------------|----------------|---------------|
| Living Room | 10'1" x 16'10" | 3.08m x 5.13m |
| Kitchen/Dining | 19'0" x 10'1" | 5.78m x 3.07m |
| Utility | 5'11" x 6'1" | 1.80m x 1.85m |
| Cloaks | 5'11" x 3'1" | 1.80m x 0.95m |

First Floor Plan



| Room | Imperial | Metric |
|-----------|----------------|---------------|
| Bedroom 1 | 12'3" x 13'10" | 3.72m x 4.22m |
| En-Suite | 5'5" x 7'9" | 1.65m x 2.37m |
| Bedroom 2 | 12'3" x 13'2" | 3.72m x 4.01m |
| Bedroom 3 | 9'1" x 10'5" | 2.76m x 3.19m |
| Bedroom 4 | 8'4" x 9'7" | 2.53m x 2.92m |
| Bathroom | 6'0" x 9'8" | 1.82m x 2.95m |

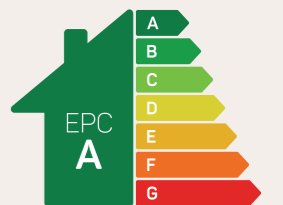
The Lymm

4 bed detached

Modern features abound in this four-bedroom family home.



Anwyl Homes is a registered developer with the NHQB. The images on this literature are computer-generated. Specific plots may be 'handed' (mirrored), detached/semi-detached, elevation treatment/roof materials may vary, and any garages may be single or double. Room sizes are approximate, dimensions are taken from the longest room point and are for guidance only. Kitchen and bathroom layouts are indicative. These plans are correct at the time of creation but may be subject to change during construction. Please speak to your Homes Adviser for more details. The Lymm 31/03/2026.



Predicted EPC rating

