



The Ascot

4 bed detached

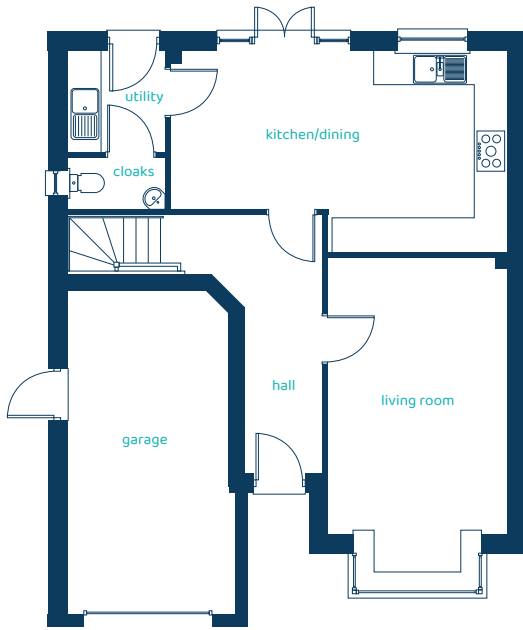
With four bedrooms and integral garage, this detached home is a family favourite.



ANWYL

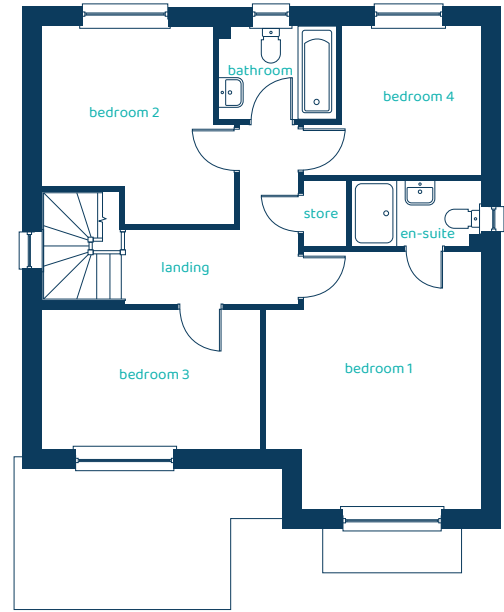
anwylhomes.co.uk

Ground Floor Plan



Room	Imperial	Metric
Living Room	10'9" x 19'4"	3.29m x 5.88m
Kitchen/Dining	20'5" x 12'1"	6.23m x 3.67m
Utility	5'11" x 6'1"	1.80m x 1.85m
Cloaks	5'11" x 3'1"	1.80m x 0.95m

First Floor Plan

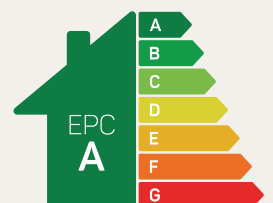


Room	Imperial	Metric
Bedroom 1	13'1" x 15'8"	3.99m x 4.76m
En-Suite	7'10" x 3'11"	2.39m x 1.20m
Bedroom 2	12'0" x 11'8"	3.65m x 3.55m
Bedroom 3	13'5" x 8'5"	4.04m x 2.56m
Bedroom 4	8'6" x 9'0"	2.58m x 2.73m
Bathroom	7'2" x 5'7"	2.18m x 1.71m

The Ascot

4 bed detached

Anwyl Homes is a registered developer with the NHQB. The images on this literature are computer-generated. Specific plots may be 'handed' (mirrored), detached/semi-detached, elevation treatment/roof materials may vary, and any garages may be single or double. Room sizes are approximate, dimensions are taken from the longest room point and are for guidance only. Kitchen and bathroom layouts are indicative. These plans are correct at the time of creation but may be subject to change during construction. Please speak to your Homes Adviser for more details. The Ascot 03/12/25.



Predicted EPC rating