



# The Evesham

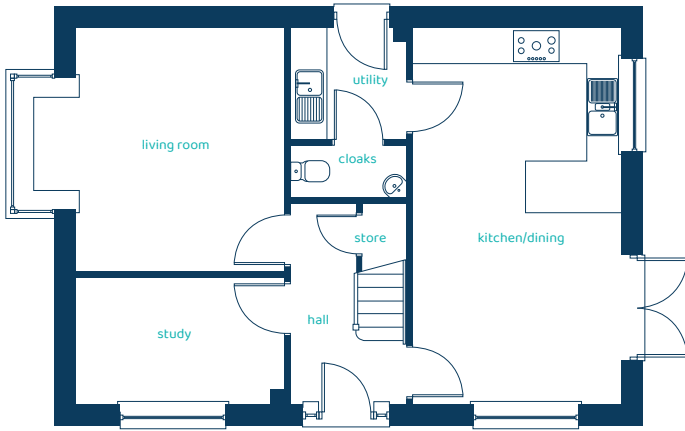
4 bed detached

Superb design and plenty of space make this four bedroom home fantastic for families. With its high ceilings and impressive proportions, this four bedroom home gives families plenty of room to relax.



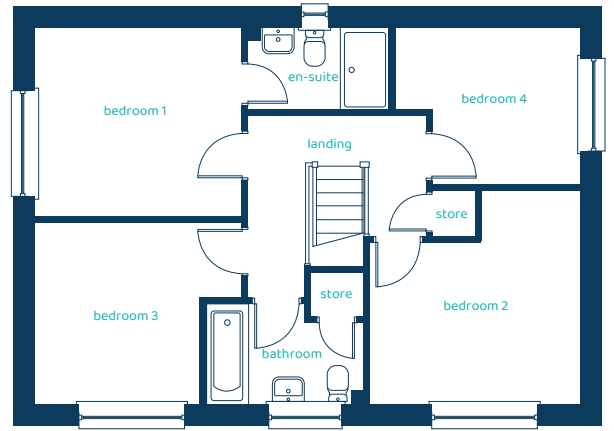
[anwylhomes.co.uk](https://anwylhomes.co.uk)

## Ground Floor Plan



Room	Imperial	Metric
Living Room	14'2" x 13'9"	4.33m x 4.18m
Kitchen/Dining	11'9" x 21'1"	3.57m x 6.43m
Utility	6'5" x 6'3"	1.95m x 1.90m
Cloaks	6'5" x 3'0"	1.95m x 0.92m
Study	11'7" x 7'1"	3.54m x 2.16m

## First Floor Plan

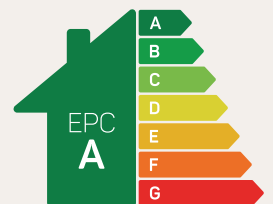


Room	Imperial	Metric
Bedroom 1	11'8" x 10'8"	3.55 x 3.25m
En-Suite	8'0" x 4'7"	2.43m x 1.40m
Bedroom 2	11'11" x 12'0"	3.63m x 3.65m
Bedroom 3	11'8" x 10'2"	3.55m x 3.09m
Bedroom 4	10'5" x 8'10"	3.17m x 2.69m
Bathroom	8'10" x 5'7"	2.70m x 1.71m

# The Evesham

## 4 bed detached

Anwyl Homes is a registered developer with the NHQB. The images on this literature are computer-generated. Specific plots may be 'handed' (mirrored), detached/semi-detached, elevation treatment/roof materials may vary, and any garages may be single or double. Room sizes are approximate, dimensions are taken from the longest room point and are for guidance only. Kitchen and bathroom layouts are indicative. These plans are correct at the time of creation but may be subject to change during construction. Please speak to your Homes Adviser for more details. The Evesham 03/12/25.



Predicted EPC rating