



The Hulme

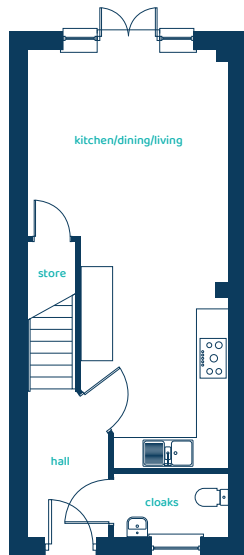
3 bed semi-detached / mid mews / end mews

A beautiful three-bedroom, three-storey home designed for all the fun of family life.



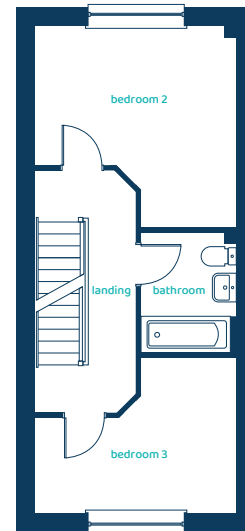
anwylhomes.co.uk

Ground Floor Plan

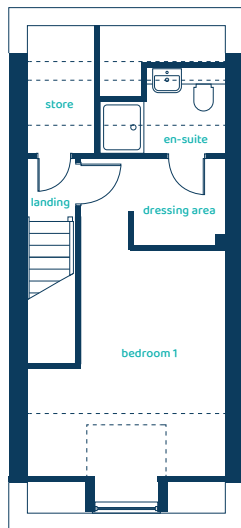


Room	Imperial	Metric
Kitchen/Dining/Living	26'2" x 12'6"	7.98m x 3.80m
Cloaks	7'2" x 3'10"	2.18m x 1.18m

First Floor Plan



Room	Imperial	Metric
Bedroom 2	12'6" x 12'7"	3.80m x 3.83m
Bedroom 3	12'6" x 9'8"	3.80m x 2.93m
Bathroom	5'11" x 7'7"	1.81m x 2.30m



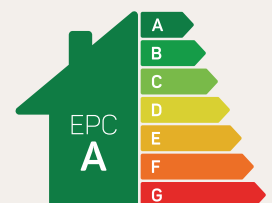
Second Floor Plan

Room	Imperial	Metric
Bedroom 1	12'5" x 15'9"	3.77m x 4.80m
En-Suite	7'10" x 5'4"	2.38m x 1.63m
Dressing Area	5'9" x 5'5"	1.75m x 1.65m

The Hulme

3 bed semi-detached / mid mews / end mews

Anwyl Homes is a registered developer with the NHQB. The images on this literature are computer-generated. Specific plots may be 'handed' (mirrored), detached/semi-detached, elevation treatment/roof materials may vary, and any garages may be single or double. Room sizes are approximate, dimensions are taken from the longest room point and are for guidance only. Kitchen and bathroom layouts are indicative. These plans are correct at the time of creation but may be subject to change during construction. Please speak to your Homes Adviser for more details. The Hulme 03/12/25.



Predicted EPC rating