



The Styal

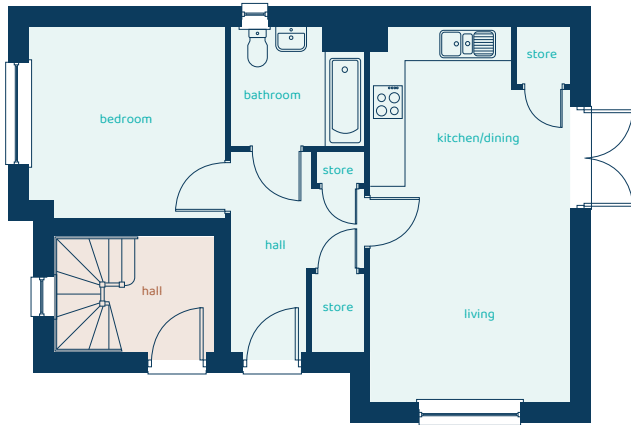
1 bed apartment

Convenient apartment living with open-plan spaces, plenty of storage and off-road parking.



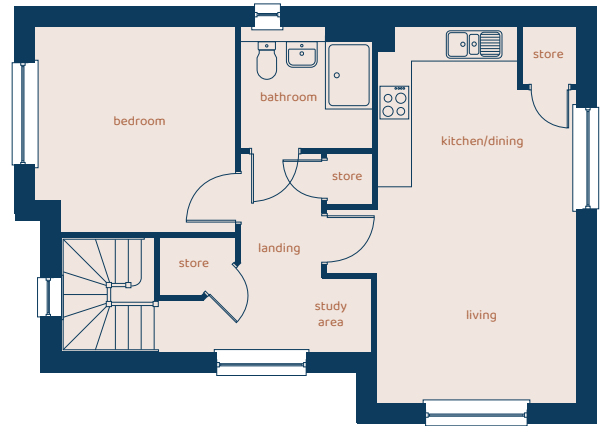
anwylhomes.co.uk

Ground Floor Apartment



Room	Imperial	Metric
Kitchen/Dining Living	21'10" x 11'6"	6.66m x 3.51m
Bedroom	11'1" x 11'4"	3.38m x 3.46m
Bathroom	6'11" x 7'7"	2.11m x 2.32m

First Floor Apartment

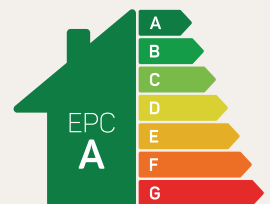


Room	Imperial	Metric
Kitchen/Dining/ Living	21'10" x 11'6"	6.66m x 3.51m
Bedroom	11'11" x 11'8"	3.64m x 3.56m
Bathroom	7'1" x 7'7"	2.15m x 2.30m

The Styal

1 bed apartment

Anwyl Homes is a registered developer with the NHQB. The images on this literature are computer-generated. Specific plots may be 'handed' (mirrored), detached/semi-detached, elevation treatment/roof materials may vary, and any garages may be single or double. Room sizes are approximate, dimensions are taken from the longest room point and are for guidance only. Kitchen and bathroom layouts are indicative. These plans are correct at the time of creation but may be subject to change during construction. Please speak to your Homes Adviser for more details. The Styal 03/12/25.



Predicted EPC rating