

ANWYL
thoughtful homes



the appleton
3 bed detached

A *stunning* 3 bedroom home ideal for buyers looking for spacious, modern living. Key features include open plan kitchen diner, separate utility room and three large bedrooms.

got
questions?

call...

**03300
244 944**

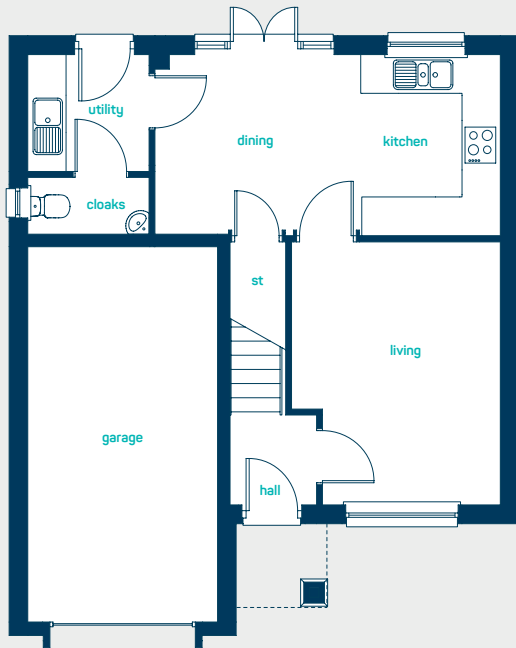
www.anwylhomes.co.uk
.....

everything considered.



beautiful open
plan living

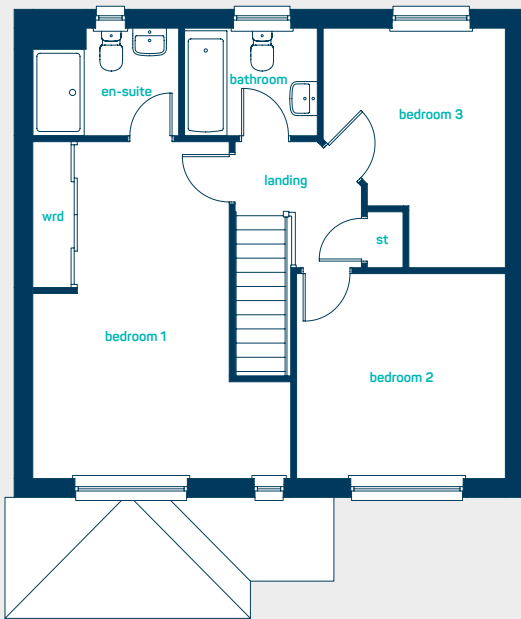
ANWYL
thoughtful homes



ground floor

kitchen/dining 18'5" x 9'5"
utility 6'5" x 6'1"
living room 13'9" x 11'1"
cloaks 6'5" x 3'0"

kitchen/dining 5.61m x 2.87m
utility 1.95m x 1.86m
living room 4.20m x 3.38m
cloaks 1.95m x 0.92m



first floor

bedroom 1 17'9" x 13'9"
en-suite 7'9" x 5'7"
bedroom 2 11'1" x 10'9"
bedroom 3 12'7" x 9'8"
bathroom 7'1" x 5'7"

bedroom 1 5.40m x 4.18m
en-suite 2.35m x 1.71m
bedroom 2 3.38m x 3.28m
bedroom 3 3.84m x 2.95m
bathroom 2.17m x 1.71m

get in
touch...
**03300
244 944**

the appleton

3 bed detached

www.anwyllhomes.co.uk

This is a computer generated image of the appleton, elevation treatment may vary. Room sizes are approximate dimensions are taken from the longest room point (please consult homes advisor for measurement points). Plots may be handed and any garages may be single or double. Kitchen and bathroom layouts are indicative. These plans are correct at the time of going to press, but may be subject to change during construction. Please ensure that you check for specific plot details. 29/05/20.

everything considered.